

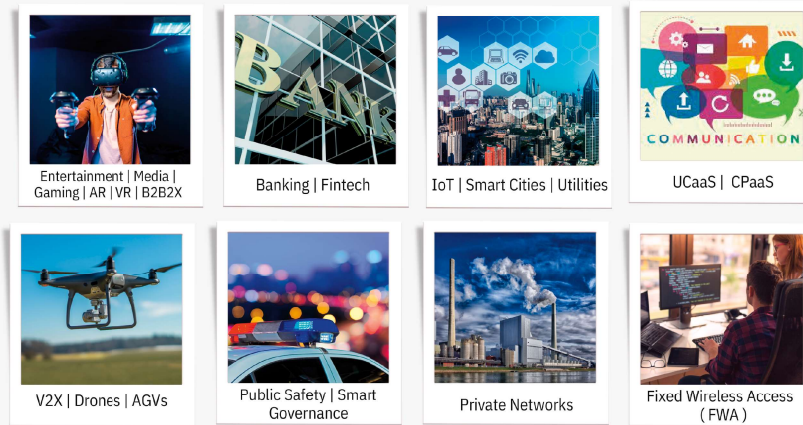
## QuantumPath Cloud MONET

A SaaS platform that leverages NEFs (like QP-NEF) and other Network Functions deployed within multiple operators' networks, and provides service APIs for various use cases.

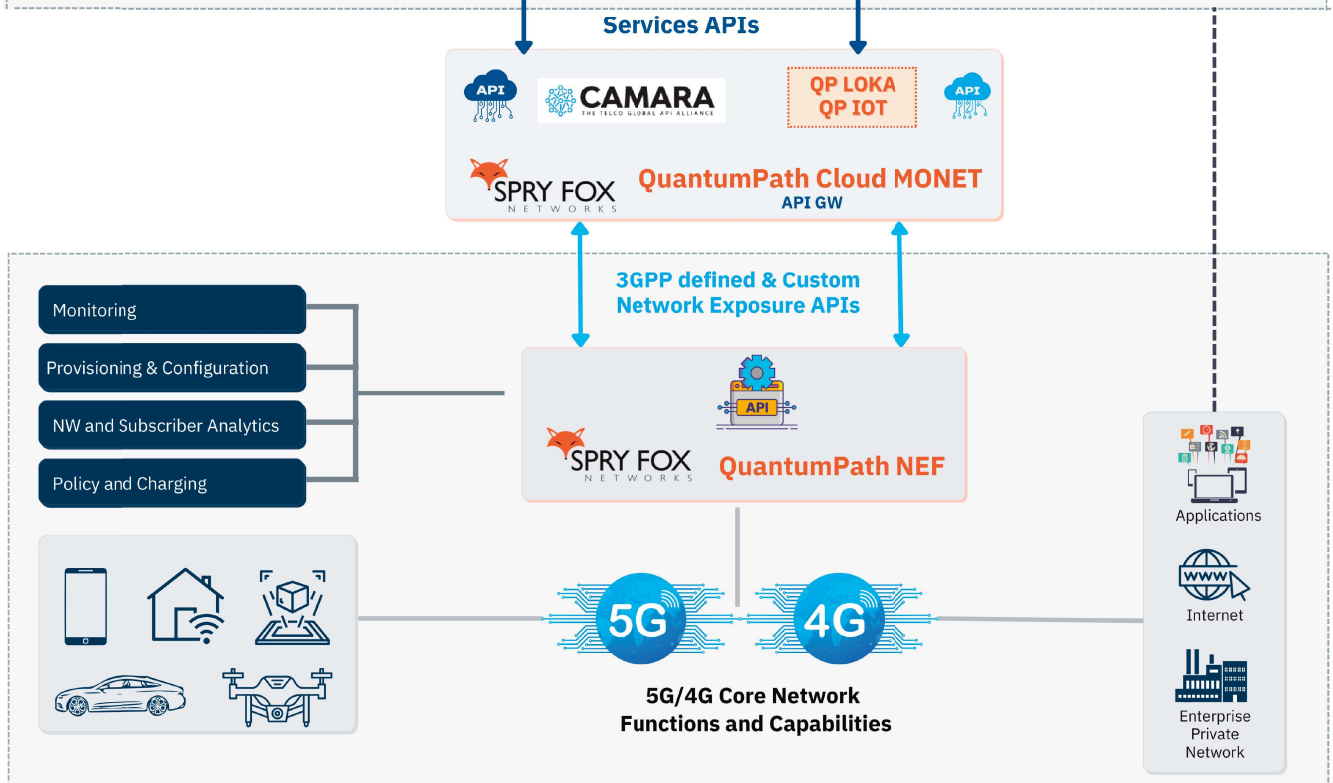
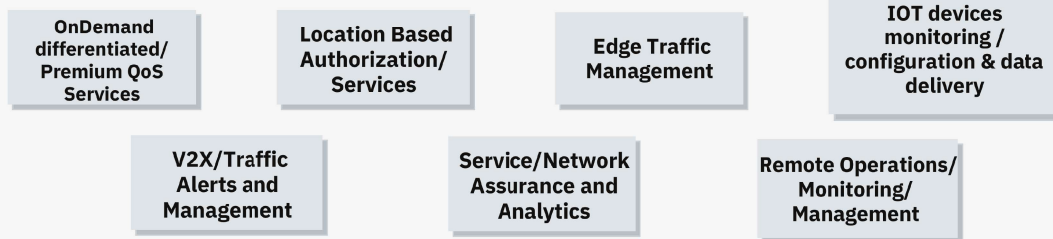
Enables the **MONETization** of **MOBILE NETWORKS**.



## APPLICATIONS

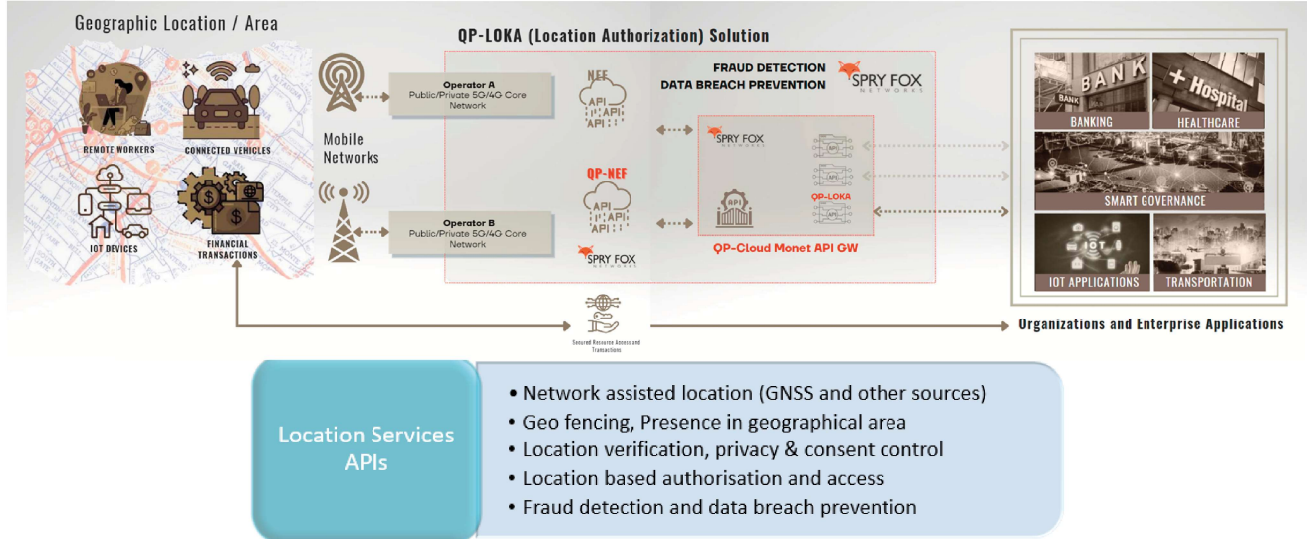


## USE CASES

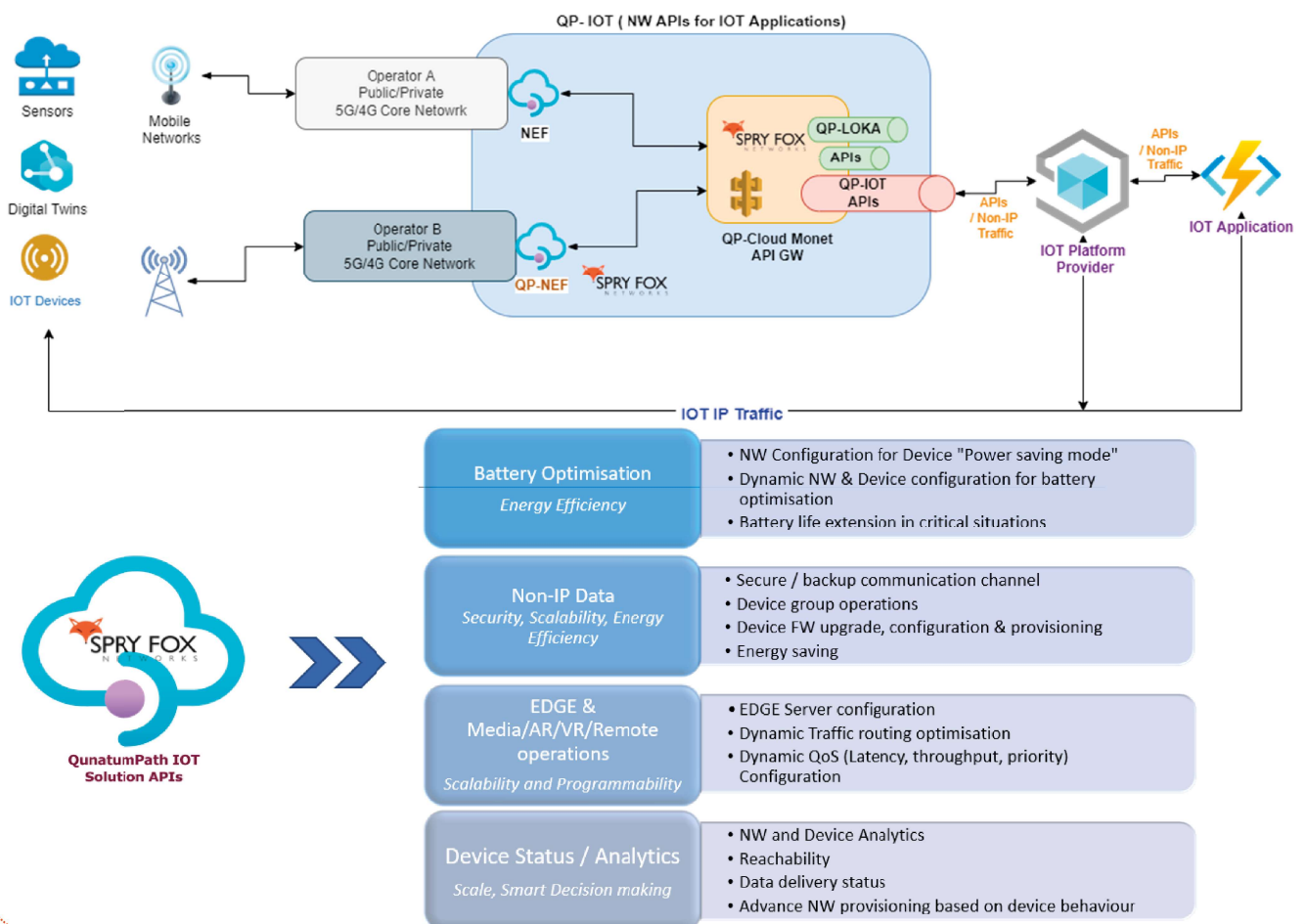


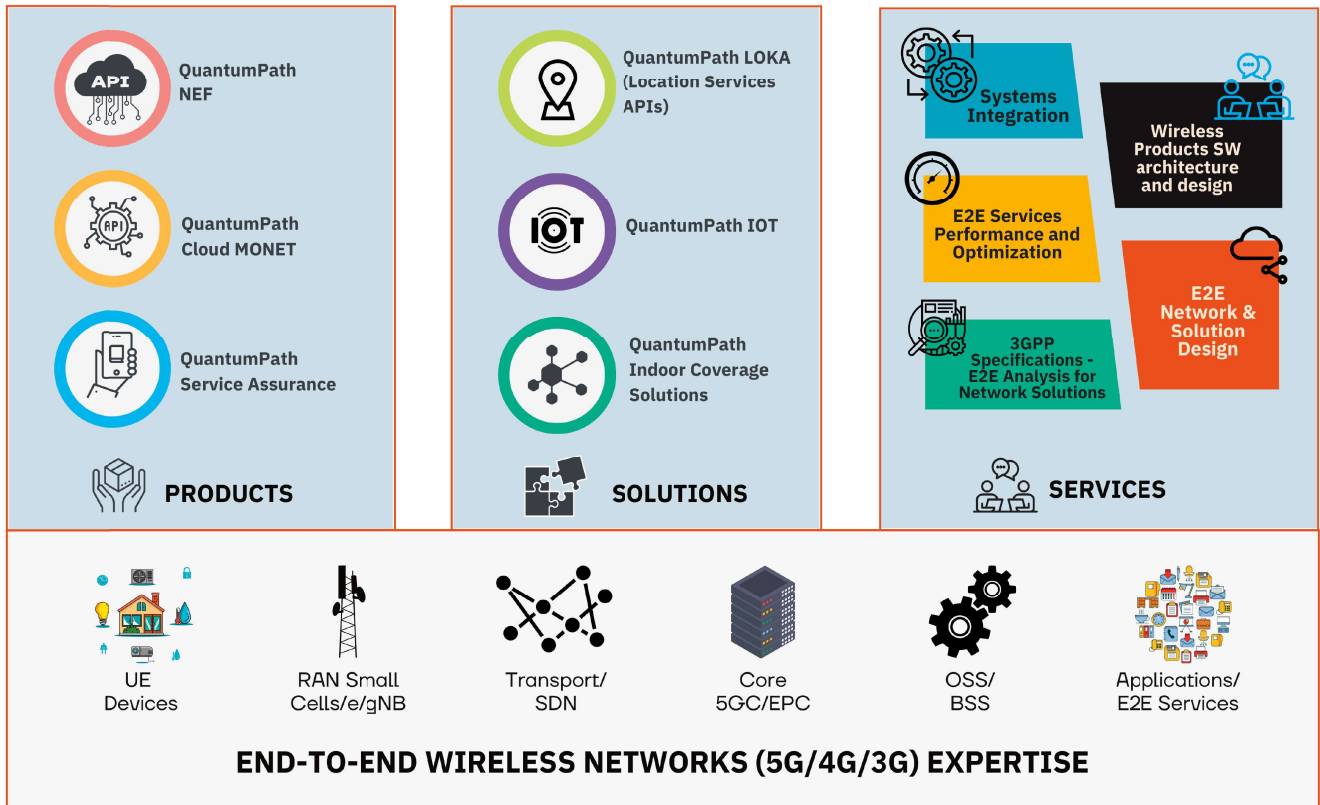


## QuantumPath LOKA - Location Services APIs



## QuantumPath IOT - IoT Solution APIs





## BACKGROUND

Self-funded startup founded by business-savvy engineers who believe in leveraging strong engineering and cohesive team dynamics to deliver the highest value for customers.

Based in UK and USA.

## OUR VALUES

We thrive in VUCA (Volatility, Uncertainty, Complexity and Ambiguity) and take complete ownership with our E2E expertise.

No boundaries, No silos!

## EXPERIENCE AND EXPERTISE

A team of high calibre E2E wireless network experts with over three decades of experience developing, integrating, deploying, and innovating all generations of wireless products and networks.

End-to-end wireless networks expertise across Core (5GC/EPC), RAN, UE, SDN, OSS, BSS, Cloud and IMS domains.

Ecosystem wide experience as Vendors, Service Providers, Systems Integrators and Solution providers.

