

E252-P30

ARM Server - 2U UP 6-Bay Edge Server



AMPERE®

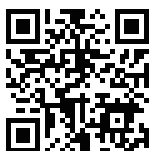


Features

- Hardware-level root of trust support
- Single socket Ampere® Altra® Processor
- 8-Channel RDIMM/LRDIMM DDR4, 16 x DIMMs
- 2 x 1Gb/s LAN ports (Intel® I350-AM2)
- 1 x Dedicated management port
- 6 x 2.5" SATA/SAS hot-swappable HDD/SSD bays
- 2 x Ultra-Fast M.2 with PCIe Gen4 x4 interface
- 6 x low profile PCIe Gen4 expansion slots
- Aspeed® AST2500 management controller
- 800W 80 PLUS Platinum redundant power supply

Specification

Dimensions	2U (W439 x H86 x D449 mm)	Backplane I/O	Speed and bandwidth: SAS 12Gb/s, SATA 6Gb/s
Motherboard	MP32-AR1	TPM	1 x TPM header with SPI interface Optional TPM2.0 kit: CTM010
CPU	Ampere® Altra® Processor Single processor, 7nm technology, LGA4926 socket Up to 80-core per processor	Power Supply	Dual 800W 80 PLUS Platinum redundant power supply AC Input: 100-240V
Chipset	System on Chip	System Management	Aspeed® AST2500 management controller GIGABYTE Management Console (AMI MegaRAC SP-X)
Memory	8-Channel DDR4 memory, 16 x DIMM slots RDIMM/LRDIMM modules up to 256GB supported Up to 4TB of memory capacity supported per processor Memory speed: Up to 3200 MHz NOTE: Only supports configurations with 1, 2, 4, 6, 8, 12, or 16 DIMMs	OS Compatibility	RHEL 8.3 (ARM64) CentOS 8.3-2011 (ARM64) SLES 15 SP2 (ARM64) Ubuntu 18.04.5-server / 20.04.1-legacy-server (ARM64) Fedora Server 33-1.2 (ARM64) FreeBSD 13.0 current (ARM64) OracleLinux R8 U2 (ARM64) Debian 10.9 (Buster) (ARM64)
LAN	2 x 1GbE LAN ports (1 x Intel® I350-AM2) 1 x 10/100/1000 management LAN	System Fans	4 x 80x80x38mm, 2-ball
Video	Integrated in Aspeed® AST2500 2D Video Graphic Adapter with PCIe bus interface 1920x1200@60Hz 32bpp, DDR4 SDRAM	Operating Properties	Operating temperature: 10°C to 35°C Operating humidity: 8-80% (non-condensing) Non-operating temperature: -40°C to 60°C Non-operating humidity: 20%-95% (non-condensing)
Storage	6 x 2.5" SATA/SAS hot-swappable HDD/SSD bays from CRAO338 SAS RAID Card	Packaging Content	1 x E252-P30 system 1 x CPU heatsink 1 x Rail kit (in option)
SAS	Supported	Reference Numbers	Barebone package: 6NE252P30MR-00 - Motherboard: 9MP32AR1NR-00 - CPU heatsink: 25ST1-353109-T1R - OCP type SAS RAID Card: 9CRAO338NR-00
RAID	RAID 0/ 1/ 1E/ 10		
Expansion Slots	2 x PCIe x16 slots (4.0 x16), Low-profile 3 x PCIe x16 slots (4.0 x8), Low-profile 1 x PCIe x8 slot (4.0 x8), Low-profile 2 x M.2 slots (4.0 x4), supports 2242/2260/2280/22110 cards		
Front I/O	4 x USB 3.0, 1 x VGA, 1 x COM, 2 x RJ45, 1 x MLAN		
Rear I/O	N/A		



Learn more about GIGABYTE server solutions, visit www.gigabyte.com/Enterprise

* All specifications are subject to change without notice. Please visit our website for the latest information.

* Ampere, Altra and Ampere logos are registered trademarks or trademarks of Ampere Computing.

* All other brands, logos and names are property of their respective owners.

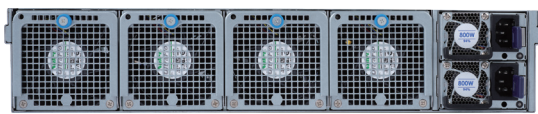
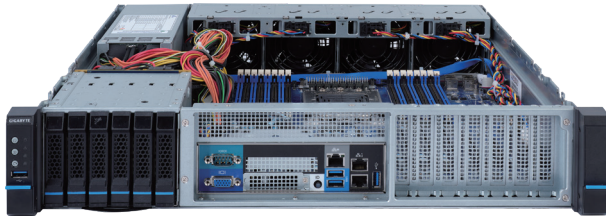
© 2021 GIGABYTE Technology Co., Ltd. All rights reserved.

E252-P31

ARM Server - 2U UP 6-Bay Edge Server



AMPERE®



Features

- Hardware-level root of trust support
- Single socket Ampere® Altra® Processor
- 8-Channel RDIMM/LRDIMM DDR4, 16 x DIMMs
- 2 x 1Gb/s LAN ports (Intel® I350-AM2)
- 1 x Dedicated management port
- 6 x 2.5" SATA hot-swappable HDD/SSD bays
- 2 x Ultra-Fast M.2 with PCIe Gen4 x4 interface
- 6 x low profile PCIe Gen4 expansion slots
- Aspeed® AST2500 management controller
- 800W 80 PLUS Platinum redundant power supply

Specification

Dimensions	2U (W439 x H86 x D449 mm)	Backplane I/O	Speed and bandwidth: SATA 6Gb/s
Motherboard	MP32-AR1	TPM	1 x TPM header with SPI interface Optional TPM2.0 kit: CTM010
CPU	Ampere® Altra® Processor Single processor, 7nm technology, LGA4926 socket Up to 80-core per processor	Power Supply	Dual 800W 80 PLUS Platinum redundant power supply AC Input: 100-240V
Chipset	System on Chip	System Management	Aspeed® AST2500 management controller GIGABYTE Management Console (AMI MegaRAC SP-X)
Memory	8-Channel DDR4 memory, 16 x DIMM slots RDIMM/LRDIMM modules up to 256GB supported Up to 4TB of memory capacity supported per processor Memory speed: Up to 3200 MHz NOTE: Only supports configurations with 1, 2, 4, 6, 8, 12, or 16 DIMMs	OS Compatibility	RHEL 8.3 (ARM64) CentOS 8.3-2011 (ARM64) SLES 15 SP2 (ARM64) Ubuntu 18.04.5-server / 20.04.1-legacy-server (ARM64) Fedora Server 33-1.2 (ARM64) FreeBSD 13.0 current (ARM64) OracleLinux R8 U2 (ARM64) Debian 10.9 (Buster) (ARM64)
LAN	2 x 1GbE LAN ports (1 x Intel® I350-AM2) 1 x 10/100/1000 management LAN	System Fans	4 x 80x80x38mm, 2-ball
Video	Integrated in Aspeed® AST2500 2D Video Graphic Adapter with PCIe bus interface 1920x1200@60Hz 32bpp, DDR4 SDRAM	Operating Properties	Operating temperature: 10°C to 35°C Operating humidity: 8-80% (non-condensing) Non-operating temperature: -40°C to 60°C Non-operating humidity: 20%-95% (non-condensing)
Storage	6 x 2.5" SATA hot-swappable HDD/SSD bays from CSTO180 (ASM1164) SATA HBA - SATA device supported only	Packaging Content	1 x E252-P31 system 1 x CPU heatsink 1 x Rail kit (in option)
SAS	N/A	Reference Numbers	Barebone package: 6NE252P31MR-00 - Motherboard: 9MP32AR1NR-00 - CPU heatsink: 25ST1-353109-T1R - OCP type SATA HBA Card: 9CSTO180NR-00
RAID	N/A		
Expansion Slots	2 x PCIe x16 slots (4.0 x16), Low-profile 3 x PCIe x16 slots (4.0 x8), Low-profile 1 x PCIe x8 slot (4.0 x8), Low-profile 2 x M.2 slots (4.0 x4), supports 2242/2260/2280/22110 cards		
Front I/O	4 x USB 3.0, 1 x VGA, 1 x COM, 2 x RJ45, 1 x MLAN		
Rear I/O	N/A		



Learn more about GIGABYTE server solutions, visit www.gigabyte.com/Enterprise

* All specifications are subject to change without notice. Please visit our website for the latest information.

* Ampere, Altra and Ampere logos are registered trademarks or trademarks of Ampere Computing.

* All other brands, logos and names are property of their respective owners.

© 2021 GIGABYTE Technology Co., Ltd. All rights reserved.