

Robin Cloud Native Storage for any Kubernetes in any Cloud

Application-aware Storage and Data Management for All Stateful Applications

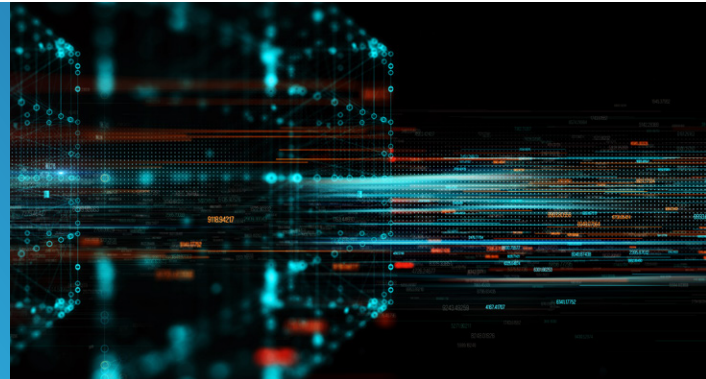
Robin Cloud Native Storage brings advanced storage and data management capabilities to any Kubernetes running on-premises or in any cloud. It is a CSI-compliant, highly scalable block storage solution with bare-metal performance that seamlessly integrates with Kubernetes-native administrative tooling such as Kubectl, Helm Charts, and Operators through standard APIs.

With Robin, Developers and DevOps teams don't need storage expertise in order to manage complex applications, allowing them to focus on their core projects. Robin Cloud Native Storage helps automate data lifecycle management such as backup/recovery, snapshots, rollback, and cloning of the entire application state, providing enterprise-grade availability.

Lastly, Robin Cloud Native Storage ensures complete cloud portability of apps+data across any public or private cloud or any Kubernetes distribution.

Robin Cloud Native Storage

Any Stateful App	RDBMS, NoSQL, Queues, Timeseries, Big Data	
Storage & Data Management	Robin Cloud Native Storage	
Any Kubernetes	K8S, OpenShift, Anthos, IBM, GKE, AKS, EKS	
Any infrastructure	Baremetal, VMs	AWS, Azure, GCP, IBM



Key Benefits

- **Always-on stateful applications**
- **Improved developer productivity**
- **Faster collaboration across teams**
- **Multi-cloud portability for applications**

Highlights

Native Kubernetes integration

Installs natively as a standard Kubernetes operator without a kernel module.

Bare-metal performance with high availability

Delivers bare metal performance while achieving HA through replication with auto-resync, and detection and repair of disk and IO errors.

Application-aware data management

All lifecycle operations are performed in the context of the entire application state (data+meta-data+configuration), not just the storage volumes.

Data Protection and Disaster Recovery

Protect the entire application (data+metadata+config) with snapshots and backups. Cloud backup provides full recovery from application crashes or datacenter disasters.

Agile Dev/Test/Ops collaboration

Collaborate across teams by cloning the entire applications in minutes. Make Dev and QA teams more productive by freeing up valuable time.

Hybrid and multi-cloud flexibility

Easily move complex stateful applications between on-prem and public clouds by running a single command.

Robin Cloud Native Storage Features

Robin Cloud Native Storage is available to users in two ways, Robin Express and Robin Enterprise. Both Robin Express and Robin Enterprise come with all of the features of Robin Cloud Native Storage. So you don't need to compromise on capability. You just need to determine how much scale you will need in your environment.



Robin Express

Get started quickly. No fees. No commitments.

- Free lifetime subscription
- All features included
- Up to 5 nodes and 5TB
- Community support



Robin Enterprise

Run mission critical applications with unlimited scale and 24x7x365 support.

- Free trial for 30 days
- All features included
- No add-ons or additional charges
- Per-node hour or annual subscription pricing
- 24x7x365 enterprise support

No Compromise: All Features Included with Robin Express and Robin Enterprise

Storage Management

Feature	Robin Express	Robin Enterprise
Application-aware storage	●	●
Bare-metal performance	●	●
Data security (encryption)	●	●
Data optimization (compression)	●	●
Data locality (compute-storage affinity)	●	●
Live data rebalancing to avoid hotspots	●	●
IOPS limits at application level	●	●
Disk and IO error detection	●	●
Disk and volume rebuilds	●	●
High availability with in-sync replication	●	●
Automatic resync of replicas on fall-behind	●	●
Volume consistency groups	●	●

Data Management

Feature	Robin Express	Robin Enterprise
Application-consistent (data+metadata+config) snapshots	●	●
Redirect-on-write snapshots for cost efficiency	●	●
App quiescing before snapshots	●	●
Auto-scheduled snapshots	●	●
Local backups to recover from system/cluster failures	●	●
Cloud backups to recover from system, cluster, or datacenter failures	●	●
Central backup repository across multiple clusters	●	●
Forever incremental backups for cost efficiency	●	●
Auto-scheduled backups	●	●
Application cloning for collaboration	●	●
Thin cloning for cost efficiency	●	●
Disaster recovery to recover from datacenter failures	●	●

Multi-cloud Portability

Feature	Robin Express	Robin Enterprise
Application-consistent (data+metadata+config) migration	●	●
Central repository across clouds for backups	●	●
Single command to import and recreate applications	●	●
Data hydration option for quick loading of applications	●	●
Secured access to backups	●	●

Get more information at robin.io/storage, or get started immediately at get.robin.io.