

# INDOOR LOCALIZATION TECHNOLOGY & EXPERTISE

POSITIONING ► TRACKING ► NAVIGATION



CONFIDENTIALITY: This presentation includes Nextome proprietary and competitive sensitive information and it is addressed under confidentiality agreement to prospective partners with the only scope of evaluating a cooperation opportunity

**Nextome is a software  
and IoT Technology company leader  
in indoor location platforms  
and Real Time Location Systems**



# Who we are, brief history

**Nextome Srl established December, 4th 2013 is an innovative SME under Italian Law (D.L. 3/2015).** The company has followed a typical technology startup three phases development path moving from problem / solution fit to product / market fit and is now starting its growth phase.

The company has followed from the beginning a “global born” approach; in 2013 during the early research phase before establishing the company the team worked on extensive international academic and literature research to understand the **state of the art** of approaches, methodologies and technologies used by research and industry to address **indoor positioning and navigation systems (IPNS) challenges**. Already in April 2014 the team enrolled in **Microsoft’s Research IPSN 2014 Competition** in Berlin, and later in the year the team was in California on a benchmarking and instruction trip.

The global positioning of the company remained a must of the company in the following two years of development being finalist and winner in several international innovation competitions as **IBM’s Global Innovators** in Barcelona and **Young ICT Leaders in Busan (Korea)**, followed by specialized international industry analysts (as **Grizzly Analytics**) and receiving request from interest and technology test by hundreds including large scale international organizations, and completing international patents.

# Nextome “going out of the office/lab” has developed its skills, technologies and experiences trough clients use cases

Nov 2013

Demo installation at the **Diocesan Museum of Bisceglie (Italy)**



Apr 2014

First installation in the Puglia Region pavilion on the occasion of **Vinitaly - Verona Fiere (Italy)**



Oct 2014

Installation at the **SFAE (San Francisco Art Exchange) in San Francisco (USA)**



May 2015

**People Tracking** - supply for **FCA** (Pomigliano d'Arco, Italy) and **ATAC Rome** (lines A and B) contract managed by **Vodafone**.



Use of **BLE 4.0** sensors with **directional antenna** - handcrafted sensors - **patent filing**

Sep 2013



Evolution of technology and introduction of the “**Intellwalk**” **algorithm automatic step recognition** based on artificial intelligence algorithms

Feb 2014



Introduction of **filtering algorithms for noise removal** with the **SVD technique**, elimination of directional antennas (**use of classic beacons**) and elimination of fingerprinting

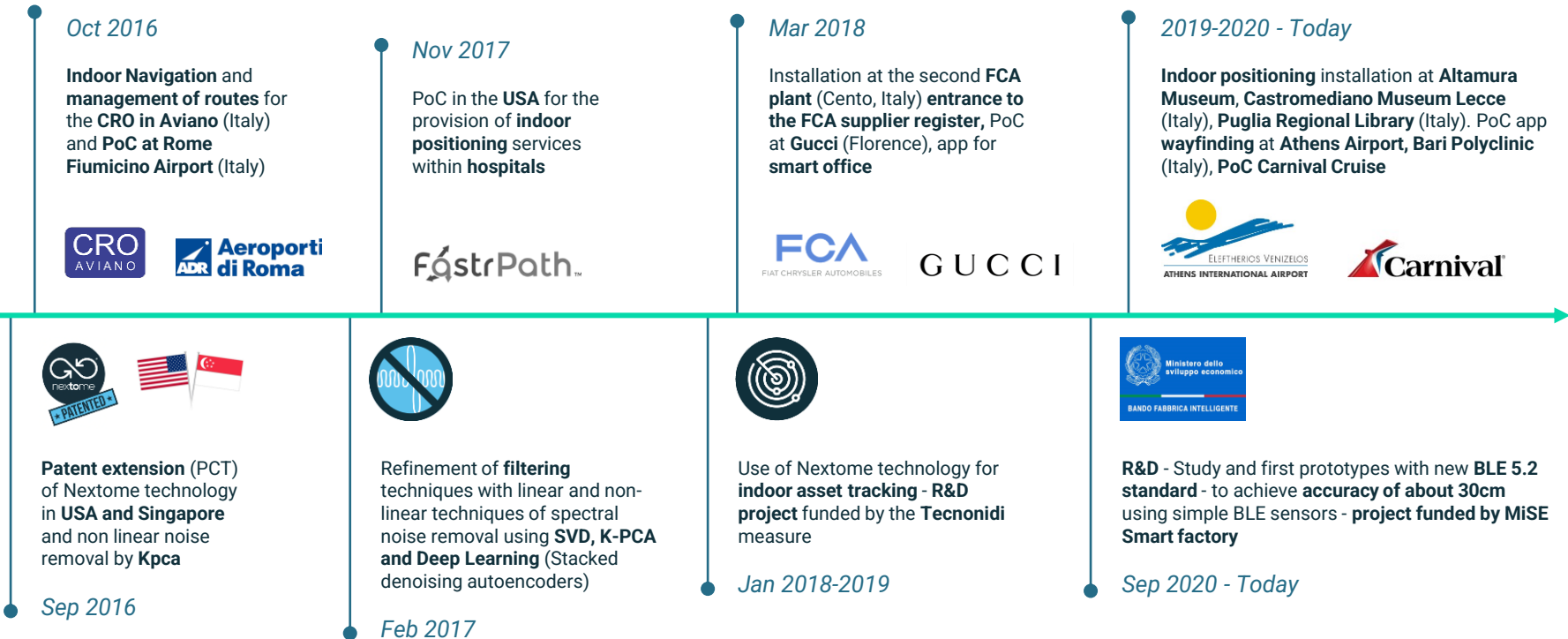
Jun 2014



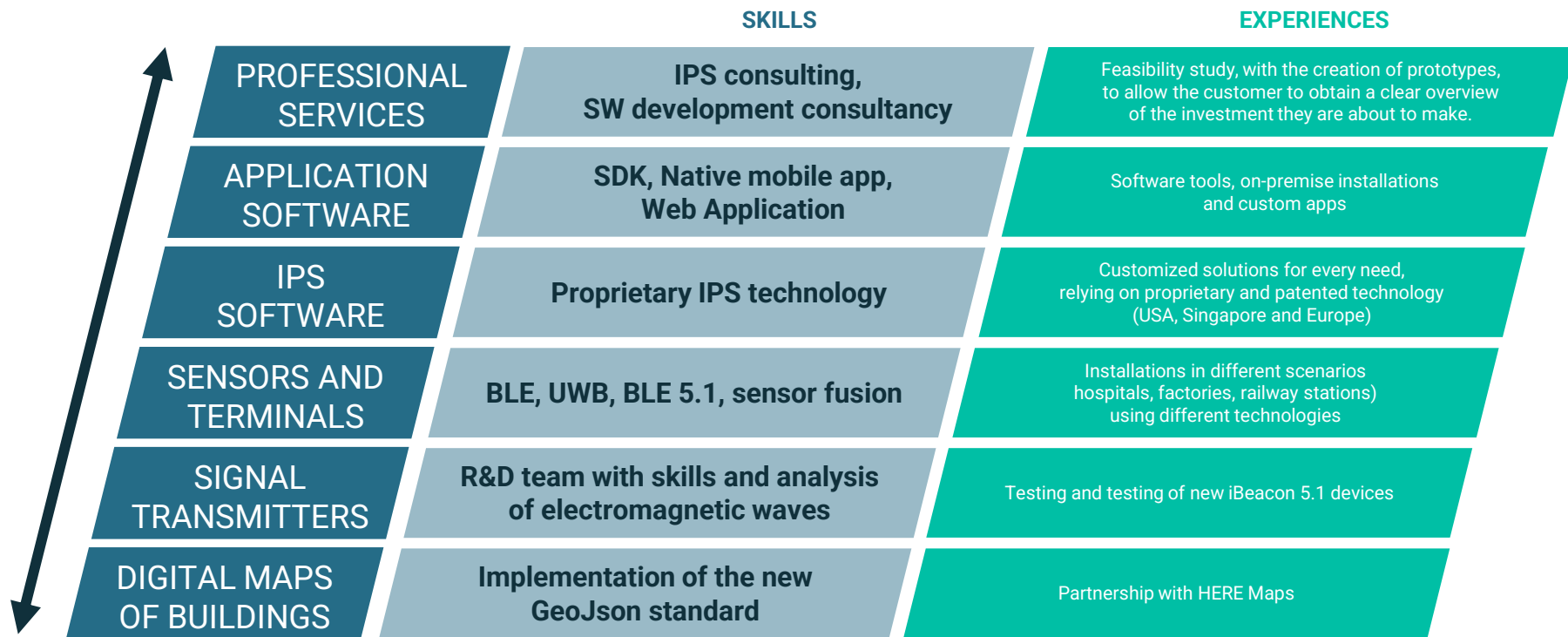
Development and improvement of the **Nextome CMS** - web portal for acquiring maps, routes and events. Introduction of **particle filtering** and improvement of the technology.

Jan 2015

# Nextome journey has been international from day one in terms of scientific research benchmark and customers standing



# Nextome's team has gained in-depth and consolidated skills and experience for indoor localization





# The founder's team technical and business knowledge, skills and experience received international recognition



## VINCENZO DENTAMARO

- PhD in Pattern Recognition;  
Degree in Computer Science  
from the University of Bari (Italy),  
MSCS A.I., Georgia Tech (USA).

- Work experience in **IBM** (Rome  
Tivoli Lab, Italy) where he  
invented the MxBridge (software  
used in the Burj Tower); Software  
engineer at **Johnson Controls  
Inc.**

- Vincenzo won **1st prize as Busan  
Smart City Innovator** in South  
Korea.



## DOMENICO COLUCCI

- Executive MBA and Degree in  
Computer Science at the  
University of Bari (Italy).

- Domenico was named **best Young  
Web Entrepreneur** in 2015 by the  
**European Commission**. Domenico  
won the prestigious "**Innovators  
Under 35**" award of the year from  
the **MIT Technology Review  
magazine**.

- Forbes** places him among the  
**best Under 30**, Manufacturing &  
Industry category.



## GIANGIUSEPPE TATEO

- Degree in Computer Science  
from the University of Bari  
(Italy).

- Selected for the **Erasmus IP**  
(Intensive Program) SURGEOM  
37 students from 6 European  
countries.

- Forbes** places him among the  
**best Under 30**, Manufacturing &  
Industry category.



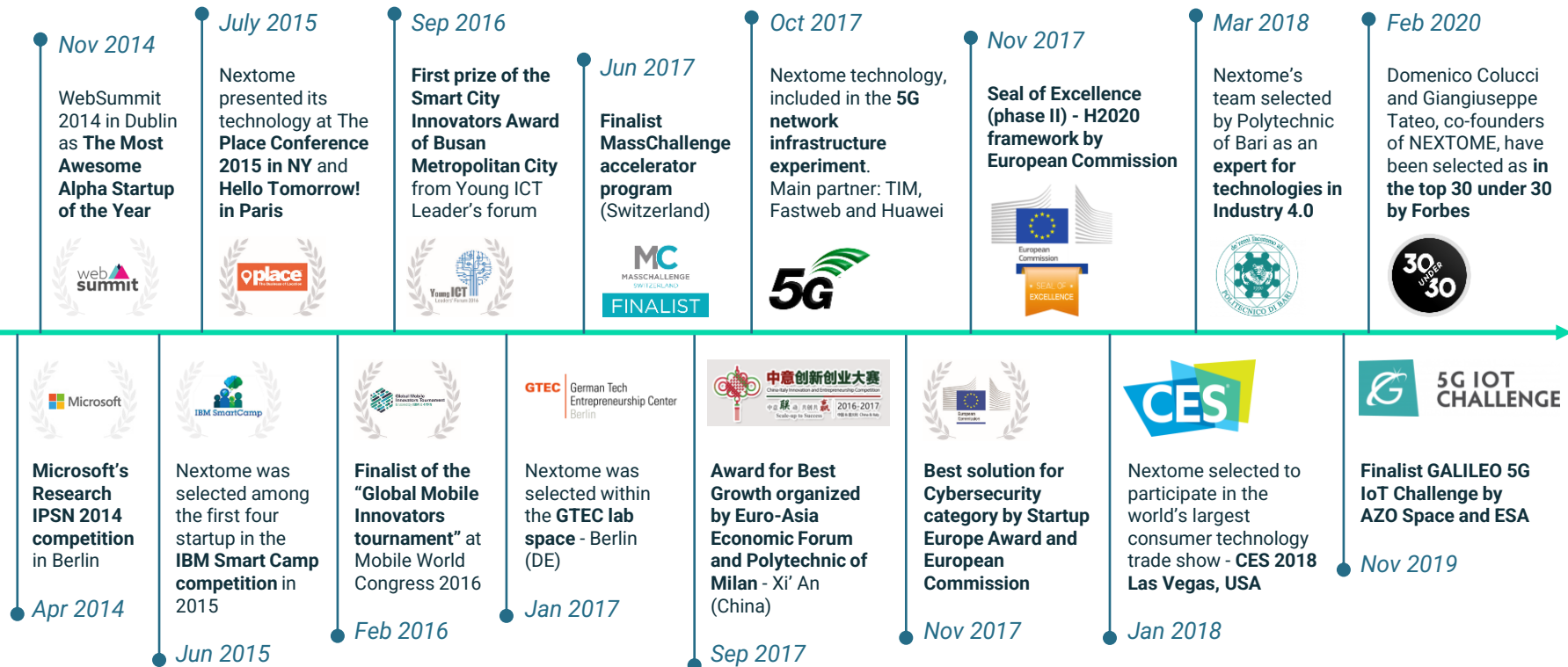
## MARCO BICOCCHI PICHI

- Degree in Economics and  
Commerce University of Turin  
(Italy) and **MBA** Nyenrode (NL).

- > 30 Y.rs **International Business  
Experience** (Bull, EDS now HP, E&Y,  
Booz Allen Hamilton, A.T. Kearney).  
**2nd President of the Italia Startup  
Association** (2015/18).

- Italian Business Angel of the Year**  
in 2014. **Professional Excellence  
Award** Booz Allen Hamilton 2004.

# Nextome's *thought leadership* has received numerous international awards since its foundation





We help organizations within different industries to enhance their services and streamline their processes by **localizing, guiding and tracking users and assets** with a simple to install, **ready-to-use and cost-effective solution.**



# What we do, our solutions for different industries

**Manufacturing  
& Industry 4.0**



**Smart Building  
& Office**



**Retail  
& Hospitality**



**Healthcare**



**Smart city**

(Station, Metro Station,  
Airport, Security services)

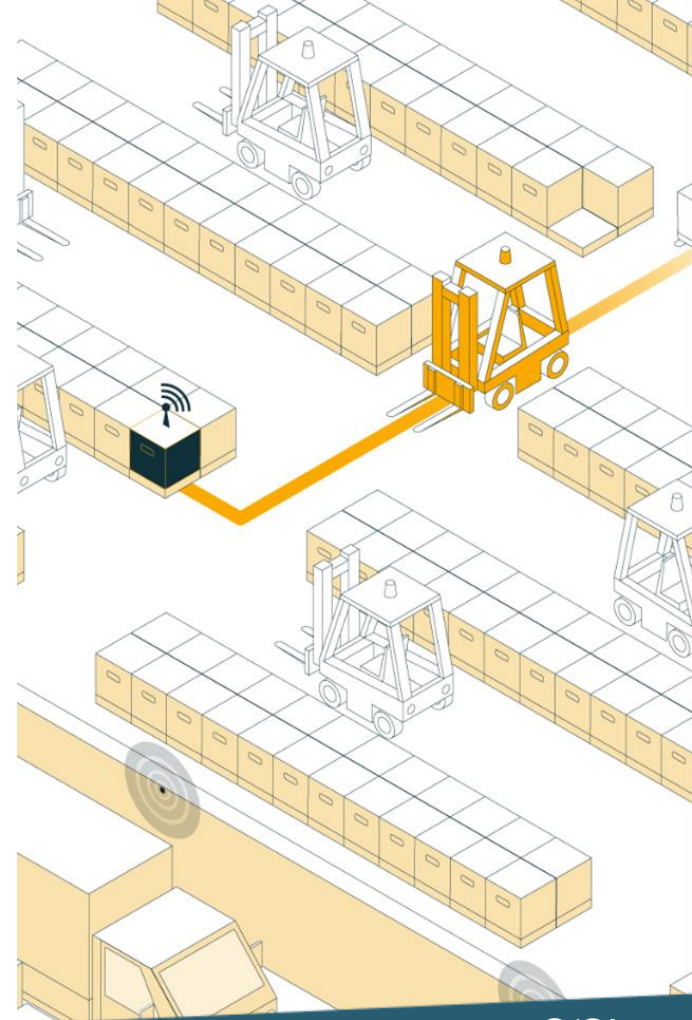


# Manufacturing and Industry 4.0

## Improve productivity and working conditions

The manufacturing industry is increasingly facing **unique challenges** to constantly **improve** its **processes**. Companies are looking for tools able to provide **Real time awareness** to support better decision making. **RTLS** are a key technology being leveraged to offer a wider range of location-based solutions that can improve operational **safety** and **efficiency** creating **smart factories**.

- ▶ Provide a **safe working environment** for your employees and comply with safety regulations
- ▶ **Improve** and **optimize workflows** with accurate, real-time data
- ▶ **Reduce operating** and service **costs** by integrating location tracking technology into your production
- ▶ **Minimize loss** and shrinkage and **optimize usage and space** with real-time asset tracking
- ▶ **Improve** employee **productivity** with AI integrated smart systems



# Healthcare

Save lives and money

**Hospital and clinics** are information-intensive organizations operating in a daily **high emergency** and risky environment now facing an increasing pressure to improve patient's care while achieving operational **efficiency**. **RTLS** Go beyond traditional indoor **wayfinding** providing a data-driven platform able to improve the overall quality of care while streamlining processes and **reducing operating cost**

- ▶ **Guide patients** to their destination **avoiding** personnel **waste of time**
- ▶ **Improve care** ensuring the right person and equipment are in the right place at the right time
- ▶ **Improve** and Keep control over **facility** and equipment **services**
- ▶ **Control** and **manage** patient **access** to **specific areas**
- ▶ **Improve** Hygiene and infection control **measures**





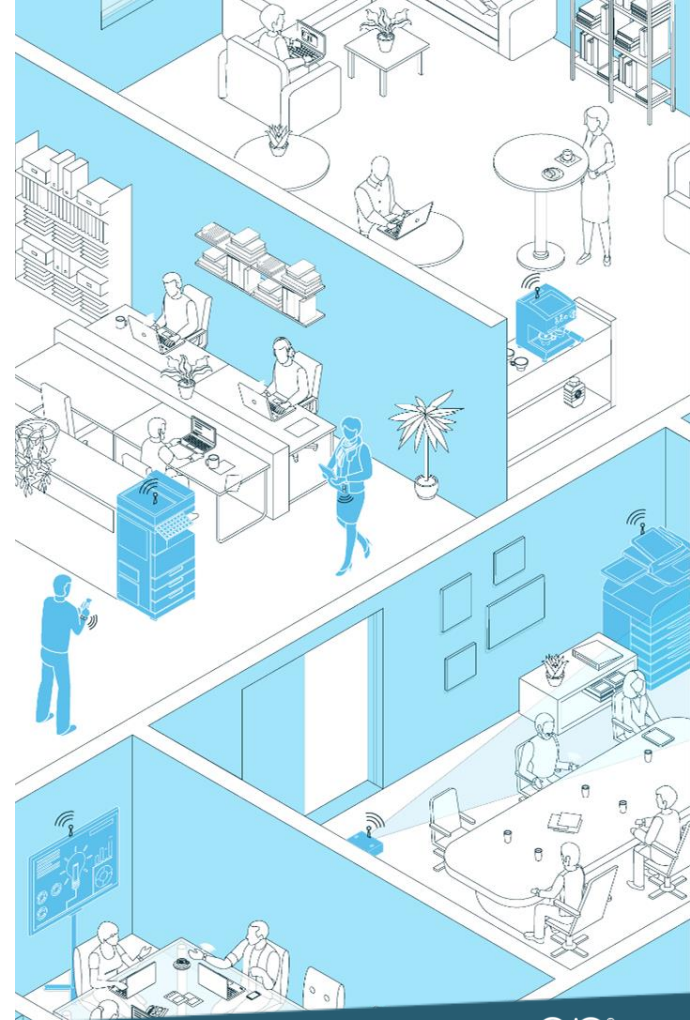
# Smart Building & Offices

Enable the next generation workplace and office

A building is any structure with a roof and walls. **A Smart building** on the other hand needs to leverage technology to quickly disseminate information between building systems in order to **improve business and the occupant's lives**

**RTLS** allows to develop an **in-depth understanding** of the **traffic** and ultimately **usage** pattern of the building to **optimize space and flows**, **increase** the **energy efficiency and security** of the building while **improving visitor satisfaction** and **empowering** employees to **work more effectively**

- ▶ **Improve safety and security** with **access control**, **emergency procedures** automation, **safety inspection control** and **first responder empowerment**
- ▶ **Increase energy efficiency** without affecting performances
- ▶ **Improve control over facility management** and **maintenance services**
- ▶ **Optimize use of floor space** and occupants **routes** based on daily patterns
- ▶ **Empower visitor experience** and **encourage employees cooperation** enabling wayfinding, room booking services



# Retail and Hospitality

## Delight Customers while improving security and profitability

Shopping centers are facing an **increasing pressure** due to the rise of the **e-commerce**. With the new omnichannel shopping paradigm physical stores are more and more requested to **rethink their shopping experience** with an innovative, integrated digital solutions.

**Indoor Location and Navigation Systems** works as foundation to provide a **seamless customized** shopping **experience** to customers while providing the business with data and tools to attract more customers, **increase** the space **profitability** and improve the overall **security**

- ▶ **Enrich Customers experience** with indoor navigation
- ▶ **Drive targeted traffic in-store** with proximity marketing features
- ▶ **Redesign** and **optimize use of space** based on customers behaviours
- ▶ **Increase** overall **security** and provide emergency & Evacuation Support
- ▶ **Manage** and **audit facility** management **services**



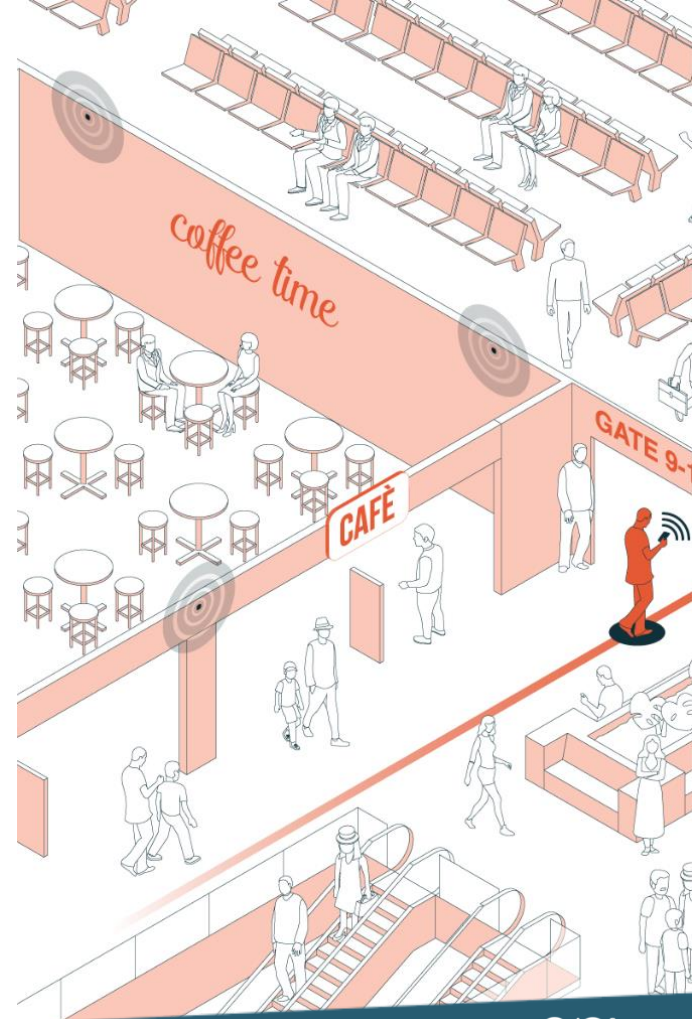
# Smart city

## Shape the smart mobility ecosystem of tomorrow

Growing populations, aging and inefficient transport systems, and rising car ownership in the world's biggest cities are leading to **greater congestion and reduced productivity**.

The goal is to **improve the journey** for passengers, while **optimizing** operators and public authorities **resources** in **airports, stations** and all along the **inter-modal transportation chain**.

**Real Time Location Systems** by sustainably managing the movement of people across different modes of transport provide the basis for cities to dramatically **improve the overall travel experience**.





# Airports & Stations

Contribute to create more agile, safer and more productive Airports & Stations.

For travellers, **airports** are always synonymous with some form of **stress**. Long queues at security or a last minute gate change, uncertain paths can make an otherwise well planned trip stressful and unpleasant.

**Reducing the stress** and time travellers spend looking for their gate, **increases** the amount of **time available for shopping and dining** (non-travel revenues that account on average for 40% on airport revenues) with an increased overall travel experience.

- ▶ **Enhance** travellers **experience** and loyalty by guiding them with seamless wayfinding
- ▶ **Optimize** passengers and **workforce flows** based on accurate geo data
- ▶ **Increase** non-travel **revenues** (commercial space profitability)
- ▶ **Increase** overall level of **security** and support security operators during emergency
- ▶ **Increase** control over **facility** management **services** and **maintenance**



# Railways and Cross-modal Transportation

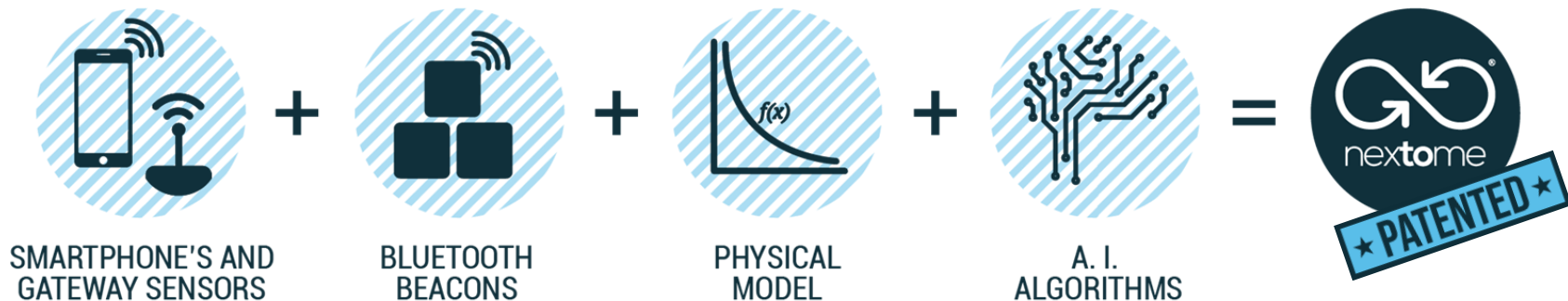
## Meet the challenges of Intelligent/Sustainable Cross-Modal Transportation Systems

**RTLS** thanks to their ability to collect location based Real-time data are at the **heart** of **Intelligent transport systems** helping operators to better **meet passengers' demand** and better **predict maintenance** and repairs providing a more sustainable and **smoother travel experience**.

- ▶ **Adjust service** based on **real time demand** (enhance traffic management)
- ▶ **Enhance security** by real time congestion monitoring
- ▶ **Reduce shutdowns** with predictive maintenance and **save repair cost** pinpointing systems stresses /failures
- ▶ **Offer** customized **smart ticketing** solutions based on passenger real utilization (seamless check in-check out)
- ▶ **Optimize** Cross-modal and **reduce bottlenecks** by incentivize underutilized modes



# Nextome Technology



Validated by



ABIresearch®



# Our Offer



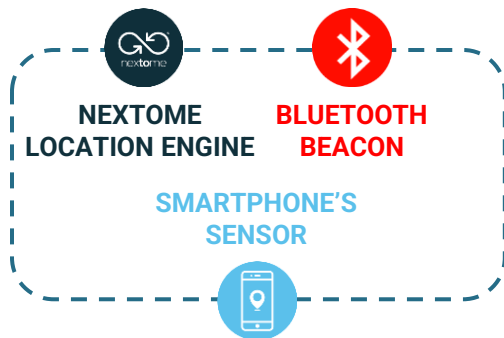
## WAYFINDING & NAVIGATION

Nextome Technology has over 5 years of research in order to achieve **high accuracy (1.5 meter)**, scalability and extreme simplicity.

**Nextome IPS:** It is the library that contains all the needed algorithms and interfaces to provide a **state-of-art indoor positioning system**. It's designed to be seamless integrated into third party mobile application.

**The SDK (Software Development Kit)** provides the core functionality of location and navigation, the list of POI (point of interest) on the map and lets you handle events related to the positions.

The localization algorithm of Nextome is already fully implemented on **Android and iOS**.



# Our Offer



## People and Asset TRACKING

Our BLE mesh acts as digital and IoT infrastructure, and provides the basis for **asset tracking and our Real Time Location System Engine**.

Select the specific asset you want to track and monitor it in real-time or select all assets at once. Select specific **time windows** to monitor **your assets**. Always keep track of missing assets and know where they are located

**Collect the position in real time** in order to monitor a specific user or to locate the user in a specific position in order to react to an event. All employees and **authorized staff members** can be tracked for service purposes, restricted areas **access control and security**.

The system can be designed to meet the specific local regulation in force.



NEXTOME  
LOCATION ENGINE



BLUETOOTH  
BEACON



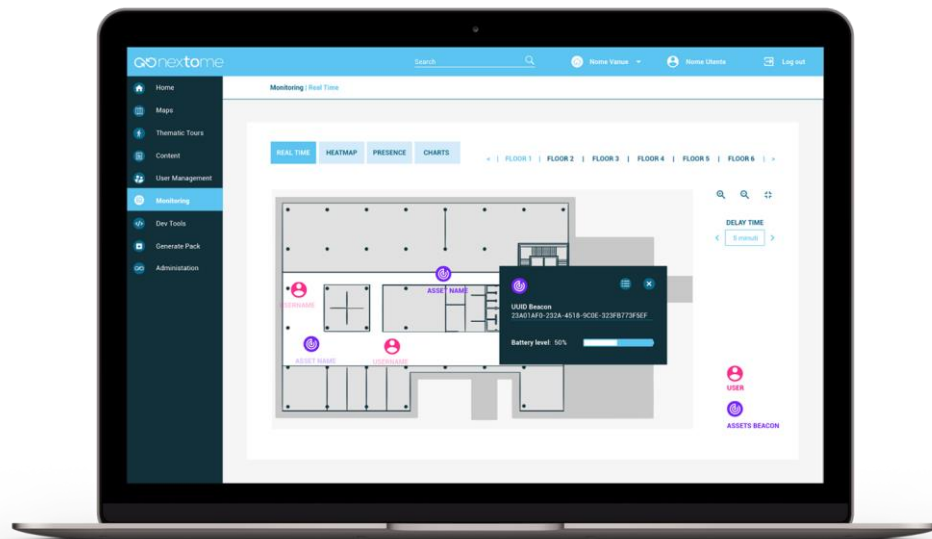
GATEWAYS



WEARABLE  
BLE TAG



BLE OR RFID  
TAG ON ASSET



# Our Offer



## CMS - CONTENT MANAGEMENT SYSTEM

Every Venue mapped by Nextome **can be managed by the Nextome web CMS** or by the **Nextome API**. Both of them allow to manage (add, delete, modify) beacons, POIs, event along with maps' and venues' data and provide **access to the Venue analytics dashboard**.

**Beacon Management:** The Nextome CMS tool simplifies the **management of the beacons within a specific location**. Maintain and register beacons, check their position within the map and **monitor the battery status**.

**Nextostats – Analytics Engine:** Nextome analytics service, stores monitored **staff behavior data** and provides location based insights. **According to privacy and labor control laws** and union agreements different levels of accuracy can be achieved.



# Some of our recent projects

|                                   | REFERENCES                                   | USE CASE  | PRODUCT DEVELOPMENT  |
|-----------------------------------|--|---|--|
| HEALTHCARE                        | CRO Aviano<br>Policlinico di Bari            | Indoor Navigation                               | Indoor tracking system for patient monitoring and indoor asset tracking.   |
| MANUFACTURING & INDUSTRY 4.0      | FCA Cento (VM Motori)<br>Bosch (Italia)      | People and Asset Tracking                       | Asset tracking for indoor / outdoor tracking - Workforce Location  |
| SMART BUILDING & OFFICE           | Gucci<br>I.OT Solutions S.p.A.               | Indoor Navigation                               | Indoor tracking inside of coworking space and pedestrian flow analysis system  |
| RETAIL & HOSPITALITY              | Museo Castromediano<br>Lecce (Noovle S.p.A.) | Indoor Navigation                               | Indoor Navigation for visitors   |
| SMART CITY (Airport and Stations) | Aeroporto di Atene<br>ATAC - Metro Roma      | Indoor/Outdoor Navigation<br>Workforce Tracking | Indoor navigation for travelers and integration with augmented reality system for retail promotions - People tracking for security |



# **APPENDIX**

## **Use cases**

# NEXTOME > Success cases



# FCA

FIAT CHRYSLER AUTOMOBILES

- ▶ Real time tracking of maintainers in a 70.000 m<sup>2</sup> production plant
- ▶ \$500 for every minute saved in fault recovery



# NEXTOME > Success cases



- ▶ Real time tracking of Security Guards in Rome Metro Stations
- ▶ Increasing performance and response time of security agency in 53 stations (so far)





# NEXTOME > Success cases



**Teca del Mediterraneo**

Biblioteca multimediale e Centro di documentazione



- ▶ Collects data to measure the distancing and behaviors in the workplace
- ▶ Booking the desk and monitor the use of spaces



# NEXTOME > Success cases



**Policlinico** di Bari | Ospedale  
"Giovanni XXIII"



- ▶ Route optimization and navigation in hospitals
- ▶ Nurse and Physicians in Admission and ER saved 500hrs/week

# Contacts



**E-MAIL:** [info@nextome.net](mailto:info@nextome.net)

**PHONE:** +39 080 880 69 15



## Nextome SRL

Via S. Francesco, 31  
70014, Conversano  
ITALY



## Fabio Ostuni

[f.ostuni@nextome.net](mailto:f.ostuni@nextome.net)  
[www.nextome.net](http://www.nextome.net)

