

Speedtest Intelligence™

Network performance, quality, coverage, video experience, and sentiment data

Speedtest Intelligence® provides insights into global fixed broadband and mobile network performance, quality, coverage, video experience, and consumer sentiment. Leveraging billions of results from the Ookla® Speedtest platform, Speedtest Intelligence is an essential tool for organizations that seek to make business and technical decisions with a full understanding of the networks in their markets. Governments, regulatory bodies, and trade groups also trust Speedtest Intelligence as an official source of record for the state of worldwide markets.

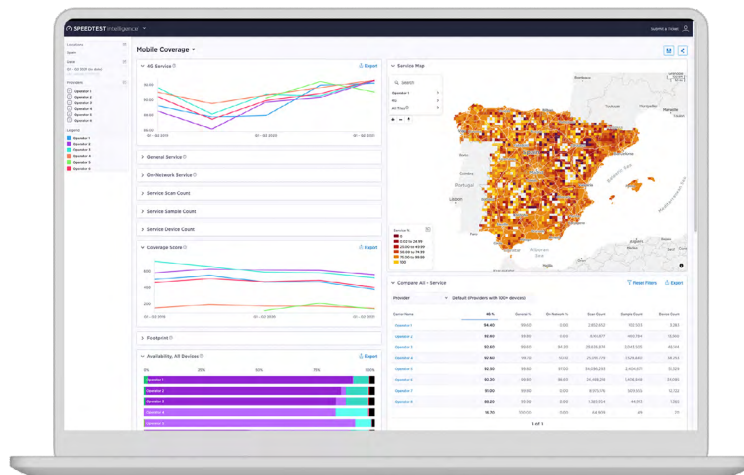


Comprehensive intelligence on fixed and mobile networks worldwide

Lab-condition tests and drive tests alone don't give the full picture of what your customers are actually experiencing. Speedtest Intelligence reveals how well your network is truly performing in the moments and locations your customers need the internet most.

Speedtest Intelligence includes over 200 data elements that give you information to confidently:

- Assess and rank operator performance
- Determine where to invest and expand your network
- Understand which devices perform best on your network
- Make external claims validating the benefits of your network and compare it to competitors
- Gain insights into customer perceptions of your network and competitor networks
- Understand customer video experience on your network
- Track changes in your network performance
- Analyze network footprint
- Pinpoint geographic hotspots of network issues
- View how metrics vary by location

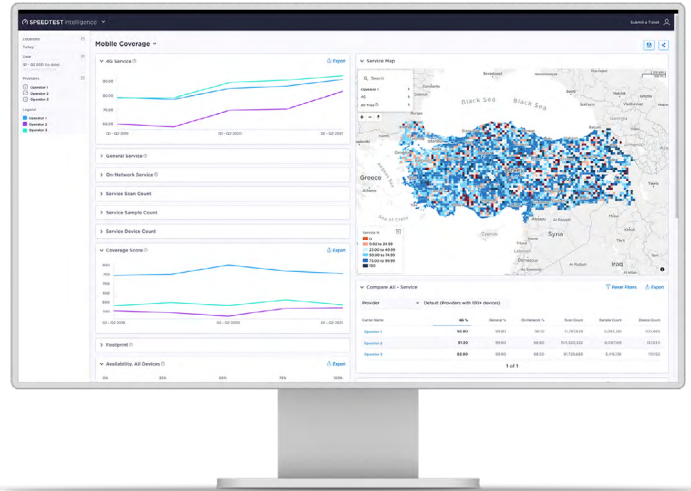


Speedtest Intelligence Portal

The Speedtest Intelligence Portal presents aggregated and analyzed data that allows you to visualize and easily understand network performance, quality, coverage, video experience, and consumer sentiment in your markets. The Portal filters and compares performance data by:

- Provider
- Location
- Historical periods
- Device or chipset
- Product manufacturer
- Mobile technology (e.g., 3G, 4G, 5G)
- Fixed broadband platform (e.g., Fixed, Wi-Fi, Desktop, Low Latency, etc.)

Raw data extracts are also available for filtering and analysis by your team.



Customization for your unique organization

Speedtest Intelligence presents multiple additional customization options, including:



Single Sign-On (SSO)

Seamlessly handle user account creation and team access to the Speedtest Intelligence Portal using your LDAP or other identity management system.



International Roaming

Understand your customers' network experience when they roam outside of your coverage area.



Real-Time Feeds

A stream of your licensed Speedtest result data, delivered to your private data store within seconds (or minutes, depending on the implementation).



Failed/Partial Tests

Understand whether network failure or consumer interruption caused an incomplete Speedtest.

Learn more at ookla.com/speedtest-intelligence