



The ZfgE profile

The ZfgE at the TU Berlin is the first point of contact for all legal issues related to researching and developing technology. We patent inventions made at the TU Berlin and conclude research contracts with economic and research partners. We also engage in research into the field of technology and intellectual property law. With a range of competences, we support our inventors and scientists from patenting to marketing.

Our activities at a glance

■ Patenting

Processing of invention disclosure,
patenting process, patent management

■ Collaborations with industry, business and research institutions

Research contracts, licensing
of technologies, patent sale

■ Science in the field of technology and intellectual property law

Conferences and meetings, interdisciplinary
research, teaching and workshops

Contact

Zentrum für geistiges Eigentum
Technische Universität Berlin
Straße des 17. Juni 135
Sekretariat H41
10623 Berlin
kontakt@zfg.e.tu-berlin.de

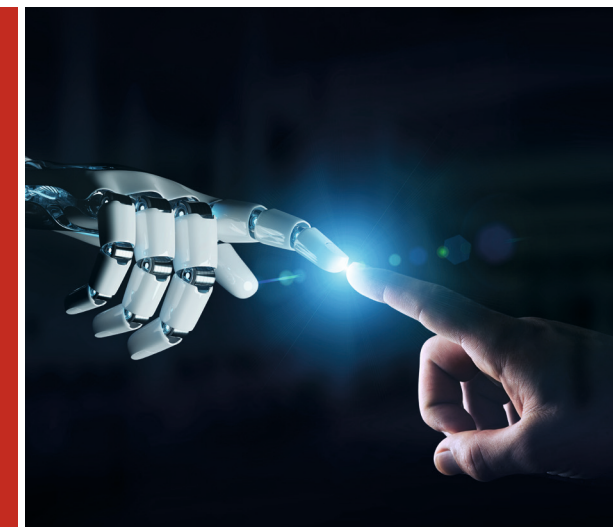
Management:

Prof. Dr. Dr. Jürgen Ensthaler
Verena Rademacher

Contact person:

Jeanne Trommer
+49 (0)30 314-24472
Jeanne.Trommer@tu-berlin.de

More information, FAQ and a database with
patented inventions of the TU Berlin
can be found at:
techoffers.tu-berlin.de/en



Cooperation with the TU Berlin

Information for
Companies and
Research institutions

Our departments

Interdisciplinary oriented

Our research profile

Placing emphasis on research TU Berlin offers a diverse spectrum created by the unique connection of natural and technical sciences with planning, economic, social sciences and the humanities.

In regard to the transfer of technologies subjects, among others, are:

■ Mathematics and Science

Chemistry, mathematics, solid state physics, optics, atomic physics, theoretical physics, astronomy, astrophysics

■ Process Science

Biotechnology, energy technology, food technology, process and process engineering, technical environmental protection, materials science and technologies

■ Electrical Engineering and Computer Science

Energy and automation technology, high-frequency & semiconductor-System technologies, telecommunication systems, technical and theoretical computer science, microelectronics, software engineering, business informatics

■ Traffic and machine systems

Fluid mechanics, technical acoustics, psychology, ergonomics, inland & maritime transport, aviation and space travel, machine design, system technology, machine tools, factory operation, mechanics

■ Planning, Construction & Environment

Architecture, civil engineering, applied geosciences, geodesy, geo information technology, landscape architecture, environmental planning, ecology, urban planning



Further information about all faculties and institutes can be found at: www.tu-berlin.de/menue/fakultaeten_zentralinstitute/parameter/en



Collaboration

Together we are strong

Nature and process of collaborations

Independent of whether it is contract research or collaborative research - TU Berlin inventions are developed to market maturity by means of grant projects. ZfgE accompanies the licensing and sale of rights of use.

In 5 steps to a marketable innovation:

- Contacting scientists
- Definition of the project
- Joint acquisition of third-party funds
- Contracts for licensing or patent purchase for securing the technology transfer
- Transfer of research results and technologies



Research & Patents

Identify and use potentials

What does the TU Berlin have on offer?

Our cooperation with industry, business and industry research institutes creates valuable synergies and makes innovations marketable. Thanks to such collaborations TU Berlin's innovations are being used worldwide.

What opportunities does cooperation present?

The science and the economy benefit equally from collaborations, the resources of the partner can be utilized at best. While research assignments are a prerequisite for many scientific projects, companies can benefit from the expertise of our scientists. This means securing key advantages and innovative product development on the global market.

When could a specific collaboration start?

Cooperation with the TU Berlin is possible at every stage; from the early research stage, in development to the licensing of the patented technology. The collaboration can be designed individually either as contract research or collaborative research.

Can I buy patents at ZfgE?

Why invent something yourself, when you can buy it? In addition to our support in research and through managing exclusive and non-exclusive licensing, we also coordinate the sale of patents. Depending on your requirements you can buy patent families or individual patents.



Our technology on offer can be found at: techoffers.tu-berlin.de/en

