

**Flowgate** appliances are high performance devices designed to significantly improve network security by monitoring network traffic and exporting flow information that can be collected and analysed inside the **redborder** platform or other compatible collectors.



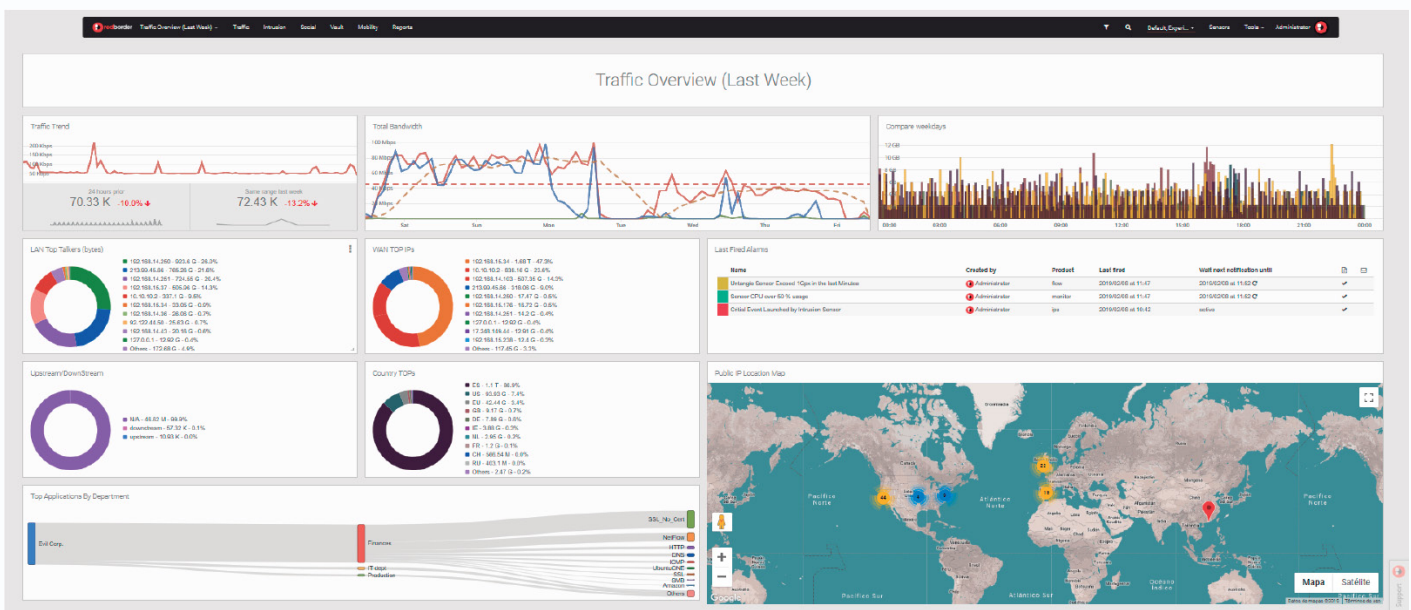
## Features and Compatibility

**redborder** flowgate probes are designed to offer a dedicated high-performance device to collect information about traffic without overloading existing network resources and offering additional features to those provided by other built-in flow exporters of usual network devices.

Connect the flowgate to the **redborder** platform and get the maximum visibility of network.

## RB-FG features:

- Supported Protocols: Netflow v5, v9 and IPFIX, sFlow, jFlow
- Flow generation with 100% packet capture and /or sampled flow
- Flexible network options design (1GB to 10GB ports)
- Customized templates for exporting traffic information
- Deep Package Inspection (DPI) feature
- Snmp and syslog monitoring compatibility



## RB-FG Models

	RB-FG0100	RB - FG1010	RB-FG2010	RB-FG3010
Hardware / Virtual	H	H	H	H
Form Factor	Desktop	1U	1U	1U
<b>HARDWARE SPECS</b>				
Cores	4	4	8	8
RAM (GB)	2	16	32	32
<b>STORAGE</b>				
HD-SATA*	0,5TB	0,5TB	1TB	1TB
<b>OTHERS</b>				
Mngt Ports	-	1	1	1
Monitoring Ports 10/100/1000 Mbs - Ethernet	4	1 / 2 / 4	-	-
Monitoring Ports (SFP-1GB)**		-	4	1 / 2 / 4...
Monitoring Ports (10G)	-	-	-	1 / 2 / 4...
<b>FEATURES</b>				
Netflow	Yes	Yes	Yes	Yes
IPFIX	Yes	Yes	Yes	Yes
sFlow	Yes	Yes	Yes	Yes
jFlow	Yes	Yes	Yes	Yes
DPI	Yes	Yes	Yes	Yes

\* Other configuration on request

\*\* More options on request (10, 40, 100GB)