



RFIS
RF INFRASTRUCTURE SENTRY

Ensuring Compliance ... Limiting Liability



Radio Frequency Infrastructure Sentry

Until now, there has been no way of ensuring that wireless sites are continuously safe and compliant



DELIVERING CUTTING EDGE INNOVATION

Waterford's patented RFIS device combines frequency spectrum analysis with Waterford's industry-leading RoofMaster™ software to assess and monitor the radio frequency emissions, regulatory compliance, and mitigation control status associated with a wireless telecommunications site.



Versatility

Suitable for every wireless site type (e.g. rooftops, small cells, in-building/DAS, towers, water tanks, etc.)



Speed to Market

Aids in zoning and permitting approval by local jurisdictions in *difficult to develop* areas



Cost Savings

Remote monitoring replaces the need for traditional compliance methods



Peace of Mind

Addresses municipal, neighborhood, environmental, and personal safety concerns related to RF emissions



Reduces Risk

Eliminates risk of fines due to non-compliance by facilitating real-time remediation



Compliance Visibility

Easy-to-use dashboard allows visibility and *on-demand* compliance reporting





Technical Features

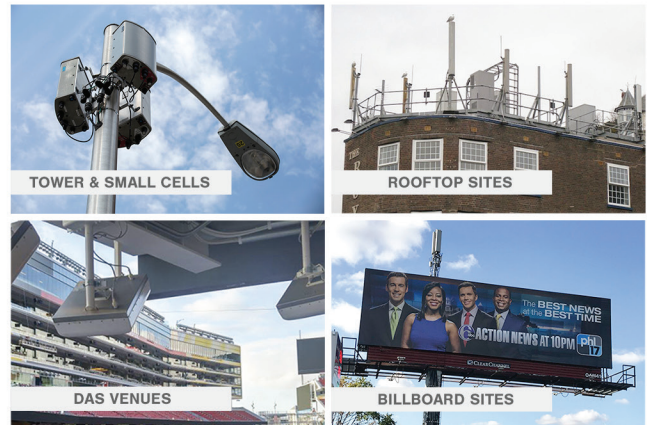
- ✓ Patented technology developed by Waterford; manufactured in U.S.
- ✓ 24/7 RF compliance monitoring delivers round-the-clock protection
- ✓ Delivers immediate alert notification if changes in compliance or RF environment detected
- ✓ Versatile mounting hardware permits quick and easy installation



Technical Data

Operating Range:	430 MHz to +40 GHz
RF Detection Threshold:	-90 dBm
Power Requirements:	110 - 220V AC, -48V DC
Power Consumption:	18 - 25 W
Operating Temperature:	-40°F to 140°F (-40°C to +60°C)
Network Compatibility:	LTE or CAT5
Dimensions:	Depth 4.1 in (104 mm) Height 10.25 in (260 mm) Width 10.25 in (260 mm)
Weight:	2.5 lbs (1.14 kg)

Typical Applications



Monitoring Features

The RFIS dashboard provides clients with access to important alerts in real-time, as well as pertinent site related data including:

- ✓ 24/7 EME compliance reporting
- ✓ Compliance status
- ✓ RF sensor monitoring
- ✓ Mitigation controls status
- ✓ On-demand photos

