



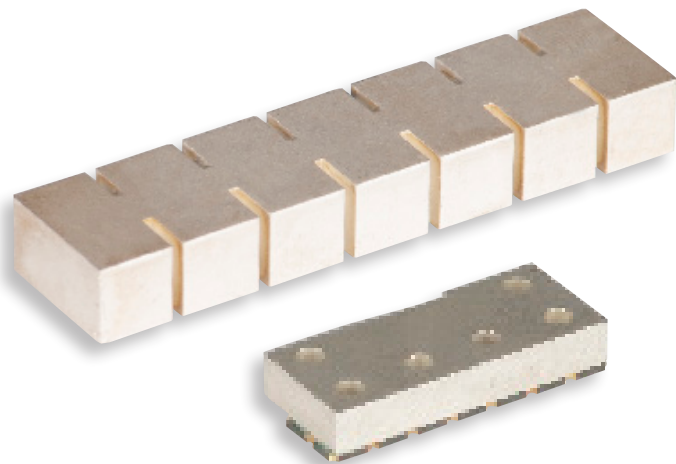
# Filter Solution

## Application

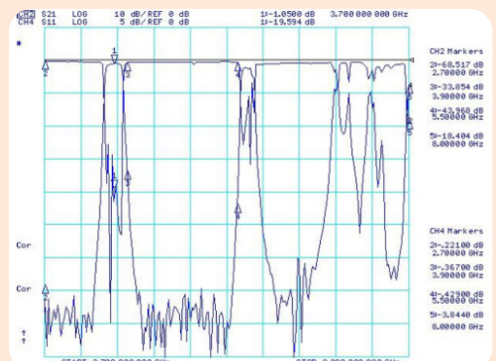
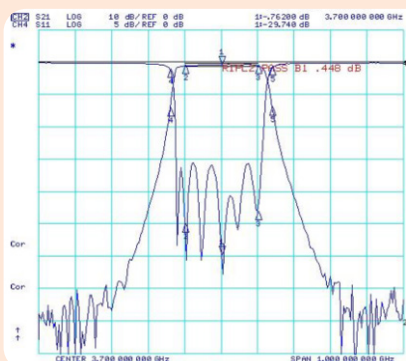
Massive MIMO (Multiple-input and Multiple-output)  
Antenna

## Feature

Ultra small size / SMD type  
Medium power / Low cost



Descriptions		Specification
Center Frequency		3500MHz
Band Width		3600-3800MHz
Insertion loss		≤ 1.1 dB
Return loss		≥ 14dB
Attenuation	DC - 2800 MHz	≥ 60 dB
	2800 - 3500 MHz	≥ 35 dB
	3500 - 3540 MHz	≥ 20 dB
	3540 - 3560 MHz	≥ 12 dB
	3840 - 3860 MHz	≥ 12 dB
	3860 - 3890 MHz	≥ 20 dB
	3890 - 5000 MHz	≥ 40 dB
	4000 - 5000 MHz	≥ 50 dB
5000 - 5850 MHz		≥ 25 dB
Dimension(mm)		65 x 15 x 8 or 35 x 15 x 7
Power handling		20 watt



RF MORECOM

Contact point: Rachel

TEL: 82-70-7609-8785

Email: [rachel@rfmkorea.com](mailto:rachel@rfmkorea.com)

[www.rfmkorea.com](http://www.rfmkorea.com)

# 5G

# Filter Solution

Mobile World Congress 2022 with RFMorecom in Barcelona.  
Our booth Number is #7F21-D



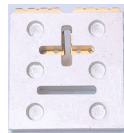
28 February - 3 March 2022

**RF Morecom Core** is a leader of development and manufacturing for RF &M/W filter and divider/combiner, cable & connector **UP TO 60GHZ**, and PA module/RF repeater in Korea. We are qualified and experienced for more than 20 years in RF&M/W market and support our valuable customers with high-end technology solution. We have high-end products line for 5G(sub 6 and mmWave)

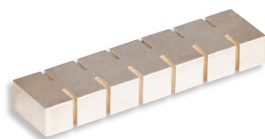
**5G Filter Solution for Massive mimo beamforming antenna**  
(Ceramic Waveguide Filter)

Ultra small size 3.5GHz  
Ceramic filter

SMD type  
Medium power  
Low cost



(20x20x7 mm)



(35x15x7 mm)

**mmWave 5G cable and connector**

Up to 60GHz cable

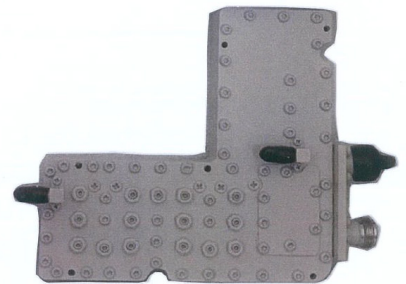
Unbelievable flexibility  
Excellent stable phase matching.  
Excellent strong phase stability.  
Very low loss



**5G wideband combiner**

Multi-band Combiner

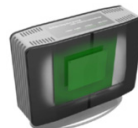
3G+LTE+5G  
PIM 160dBc  
1dB Loss



**LTE and 5G mobile coverage solution**  
(Digital Repeater/DSP module)

Digital ICS Repeater

FDD/TDD for 4G and 5G from 700Mhz to 3.5GHz for indoor and outdoor from 0.1watt to 10watt.



DSP Module

Digital Signal Processing Module with 32 channel selection filtering for mobile network/public safety/military application.



RF MORECOM

Contact point: Rachel

TEL: 82-70-7609-8785

Email: [rachel@rfmkorea.com](mailto:rachel@rfmkorea.com)

[www.rfmkorea.com](http://www.rfmkorea.com)