



Face it, Always
Virtual Human-based chatbot solution

Index

Market Problem	3
Our Solution	4
Competitiveness	
Unique Value	
Use Case	9
Pricing Plan	12
Partnership	13
Leadership and History of KLong	14

Market Probelm

Currently, there are many non-face-to-face solutions, but many users complain of discomfort.
Klone is a friendly, unique and easy-to-build virtual human-based chatbot.

existing non-face-to-face solutions and it's Limits

Kiosk

Chat/Voicebot

TTS

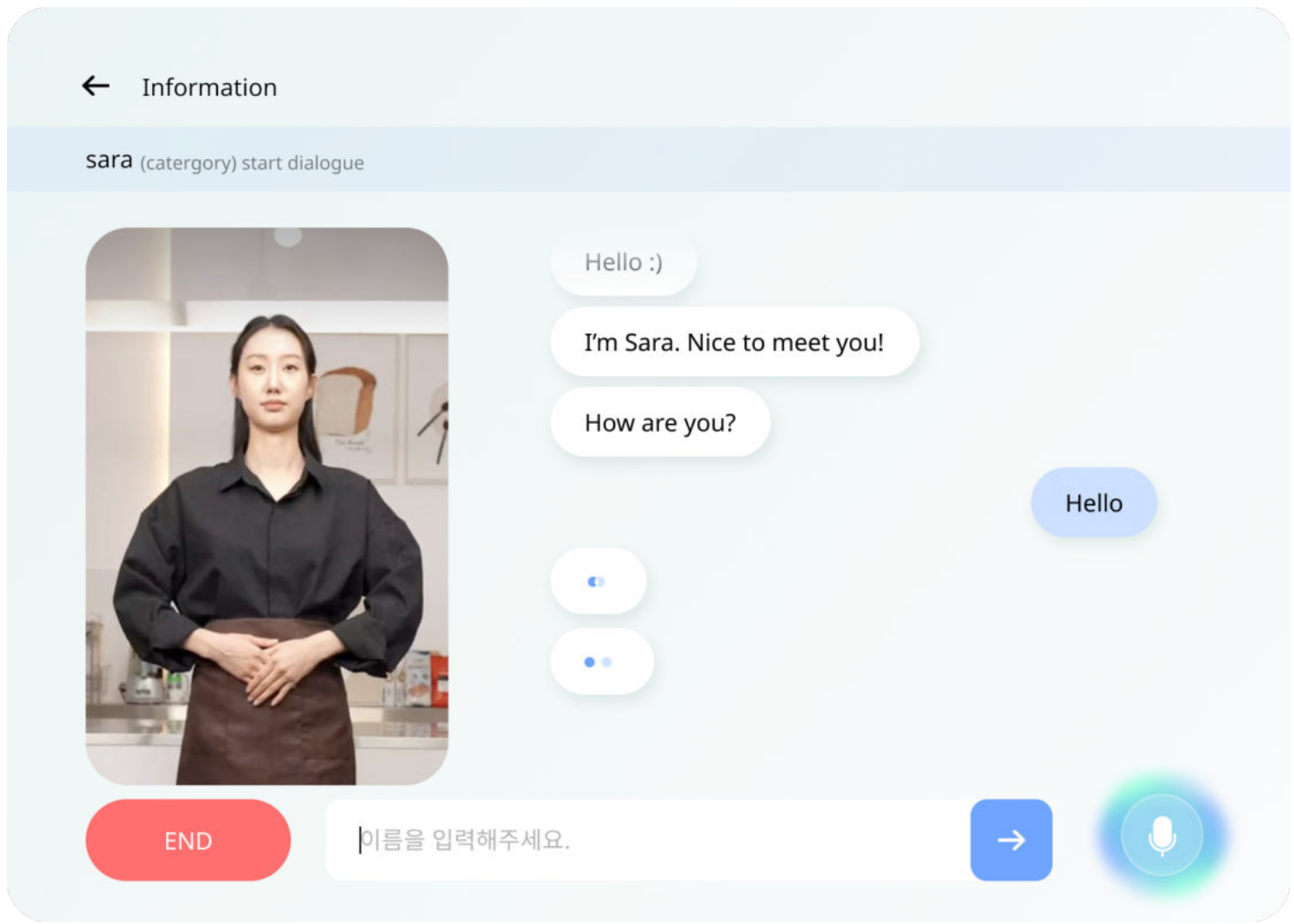
Unkind and rigid conversation experience

Standardized solution type

Difficult and complicated way to build

Solution

KLONE Virtual human-based chatbot, Klone



Friendly
No camera. No code.
Only a few clicks.

Customizable
make a difference
by a unique human.

Easy-to-Build
Face and Communicate
over text.

Competitiveness 1

Friendly

Communicate in a friendly and fun way with KLleon’s interactive virtual humans.

7000+ clips including unique gestures, expressions and outfit



Basic posture



Direction



Request



Curious



Rejection



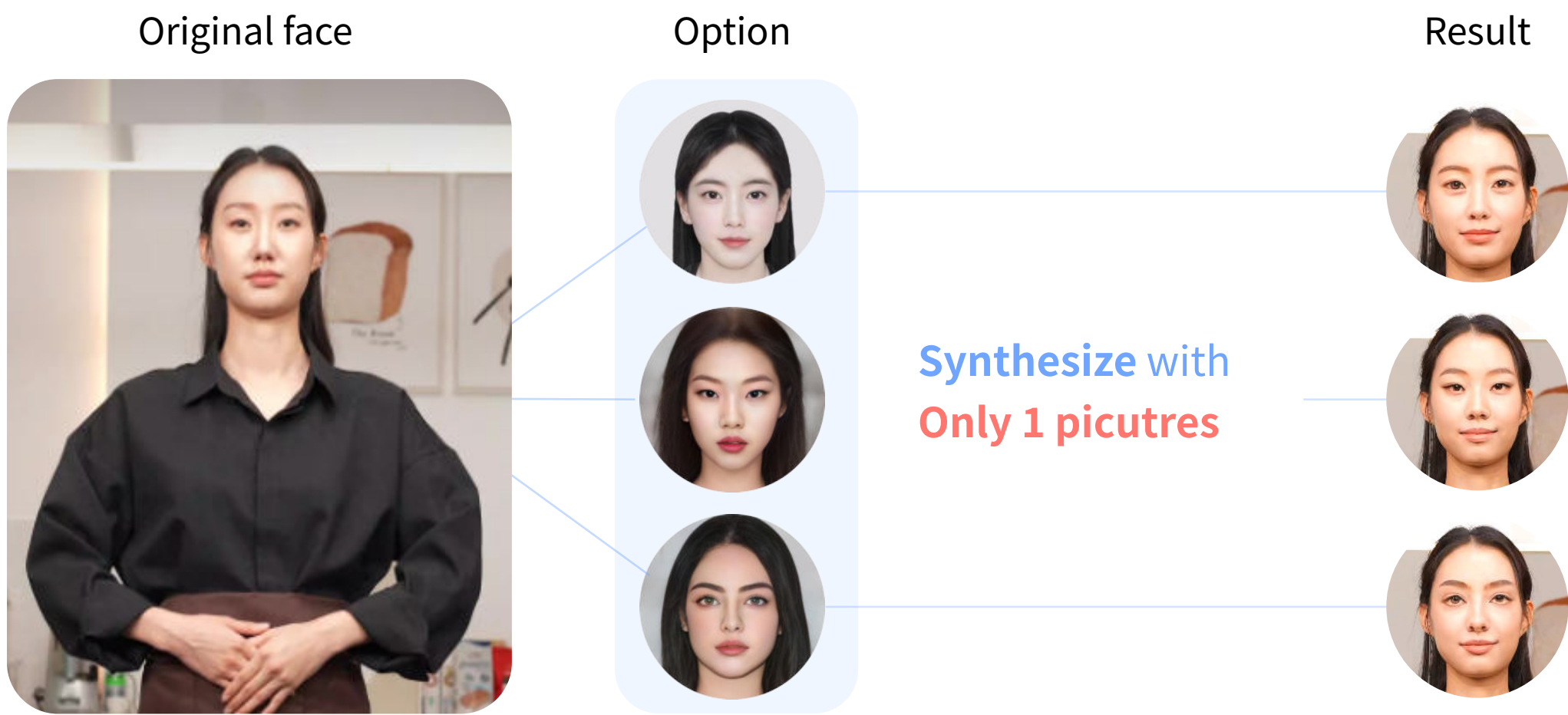
Reception

Competitiveness 2

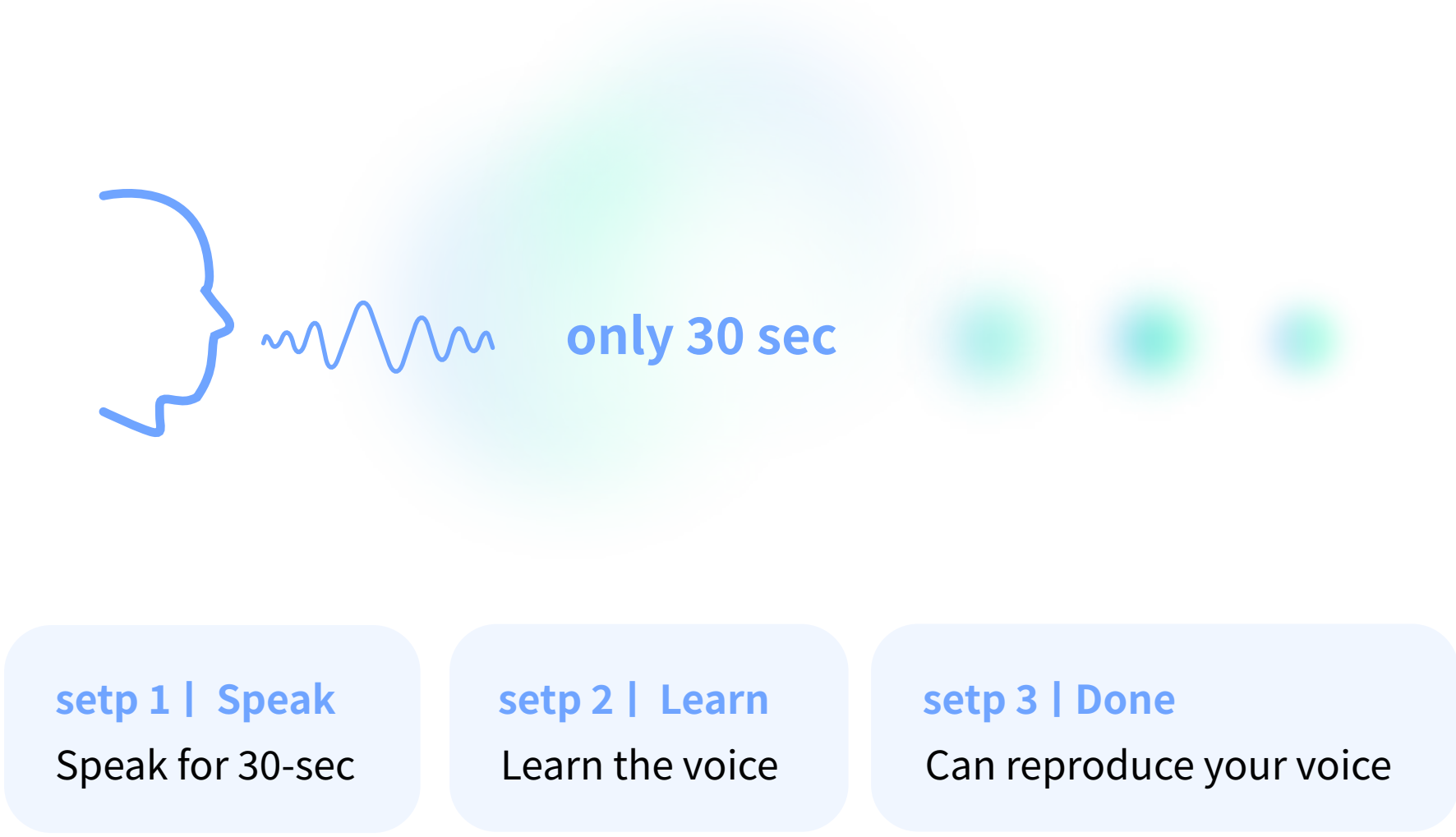
Differentiated

Customize your own virtual human using few data

Face customization with 1 picture



Voice Customization with only 30-sec voice data

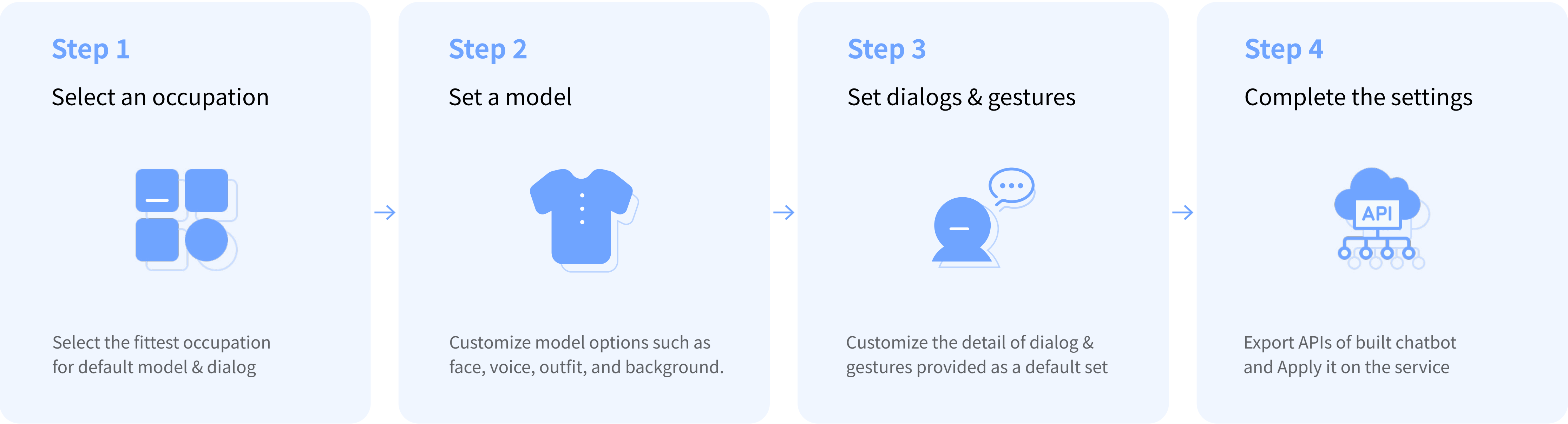


Competitiveness 3

Easy-to-Build

Build a KClone chatbot easily with only a few clicks

Simple process of building KClone

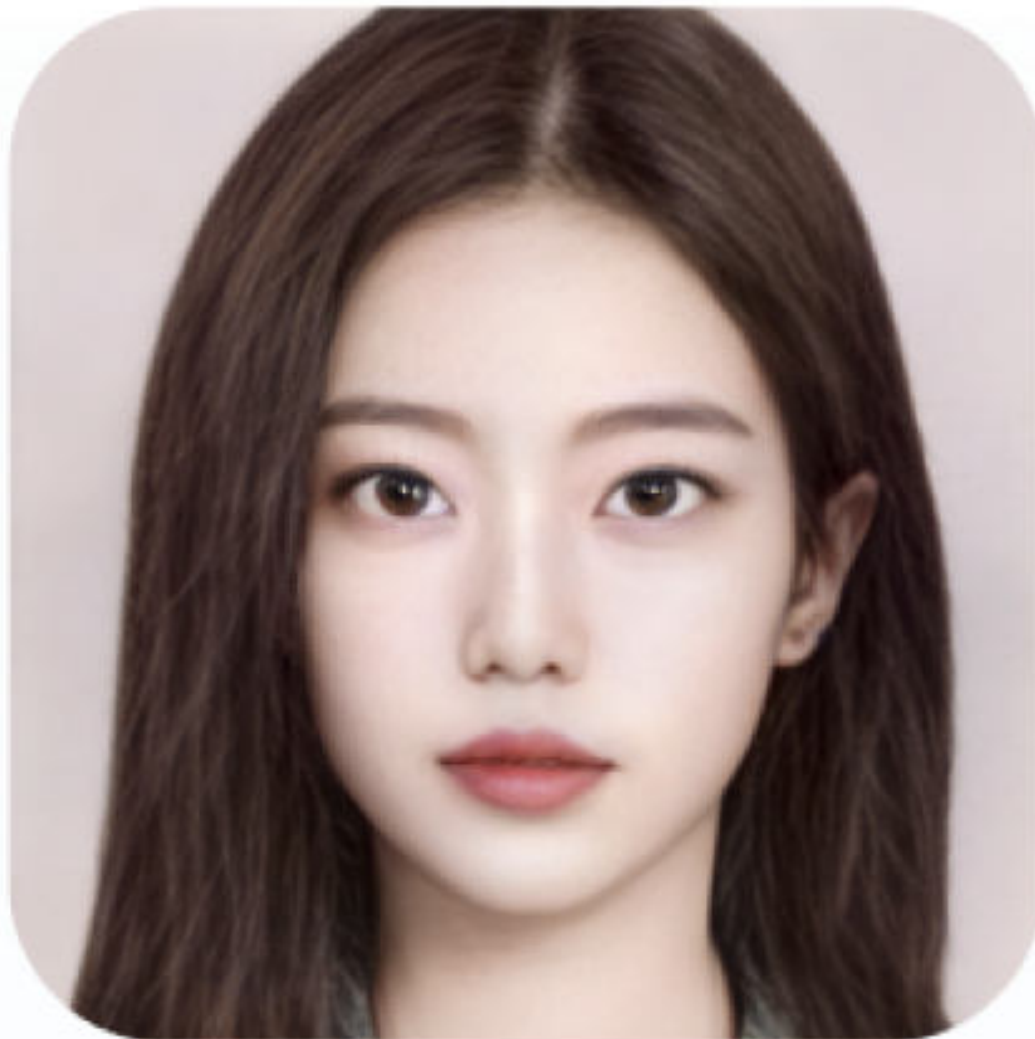


Unique Value

Virtual face

Create wholly new faces to represent your brand quickly and easily.

Examples of KLone virtual face

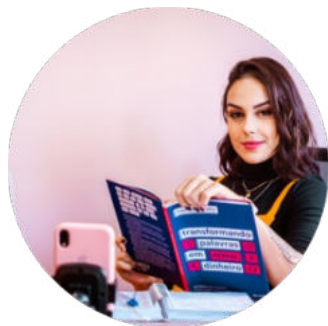


Unique Value

Flexibility

Klone can serve in a wide range of industries and devices.

Industry



Broadcaster

Virtual Announcer,
influencer



Receptionist

Restaurant, Cafe,
Concierge



CS Service

24 hours CS Service



Broadcaster

Virtual Announcer,
influencer



Counselor

Shrink,
Senior care Services



Curator

Museum docent,
Exhibition docent

Device

Kiosk

Mobile

Web

Tablet



* Klone API can serve in all of devices, because it is based on web browser service

Use Case 1 | AI Docent



AI Seo-yugu & Beethoven Exhibition

With Gyeonggi Art Center

Creating Beethoven and Seo-yugu as virtual docents for providing information

of inputs

- 1 image of Beethoven
- 1 clip of Seo-yugu

Applied technologies

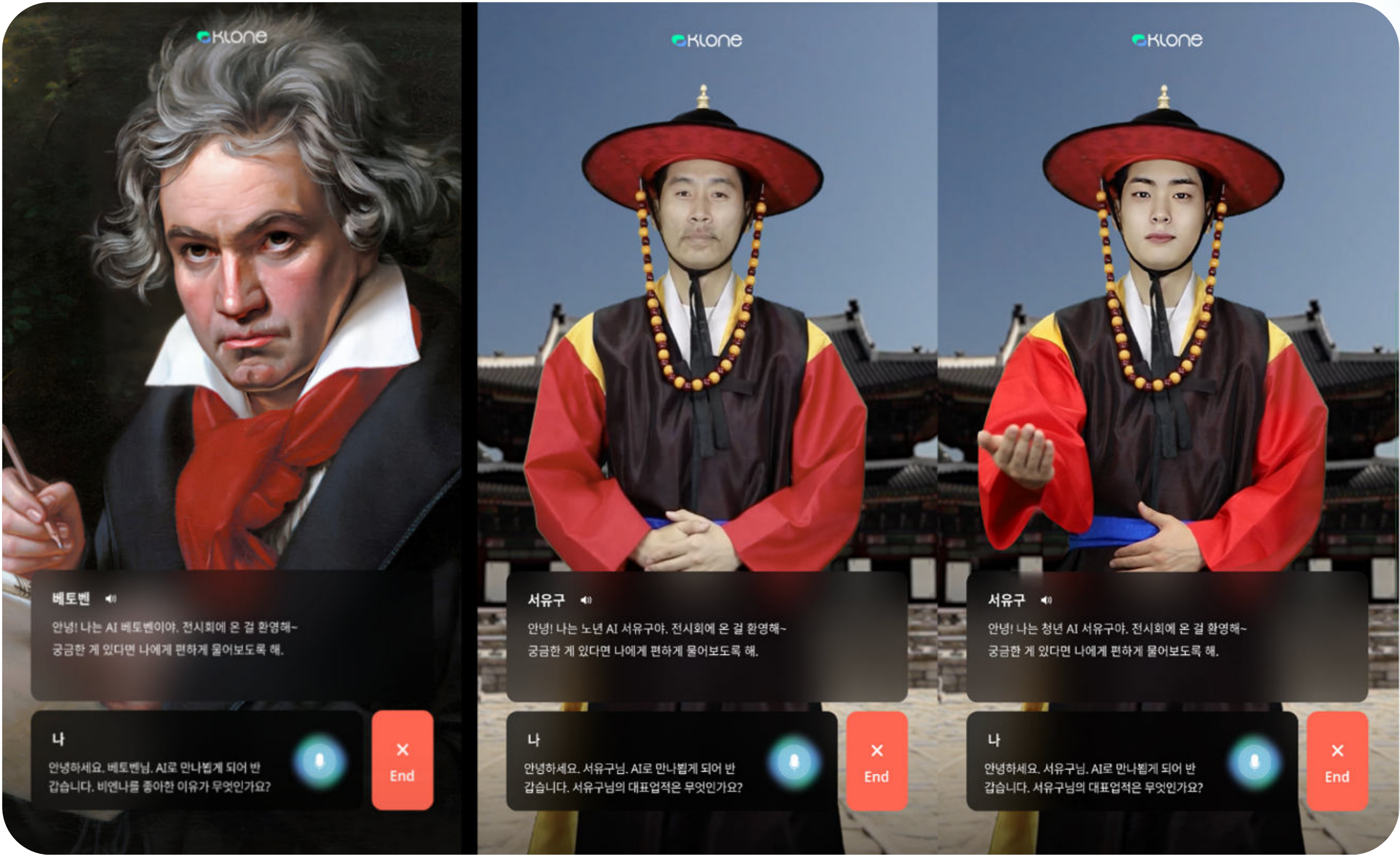
- Virtual face
- Virtual voice
- Image motionizer

of inputs

200+ video clips of Q&A each

Device

Mobile recommended



Use Case 2 | AI Tour guide



Virtual tourism kiosk

With GKL-Korea Tourism Organization

Creating a virtual tour guide for foreign tourists visiting Korea (Korean, Chinese, and English)

of inputs

5 clips of model gesture

Applied technologies

- Virtual face
- Virtual voice
- Multi-language voice interaction
- VR

of inputs

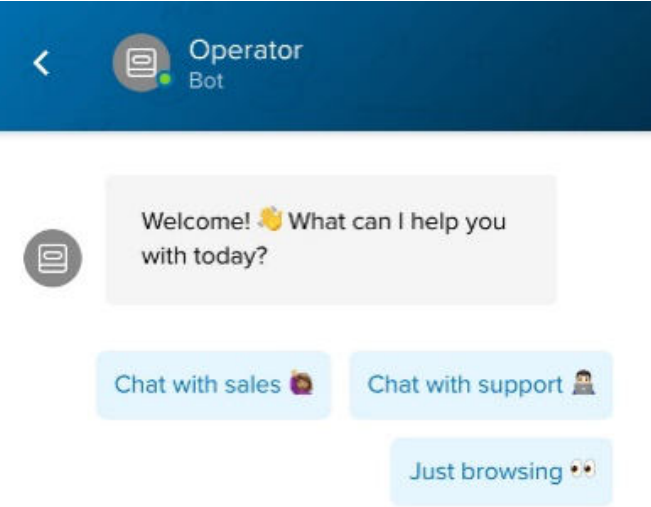
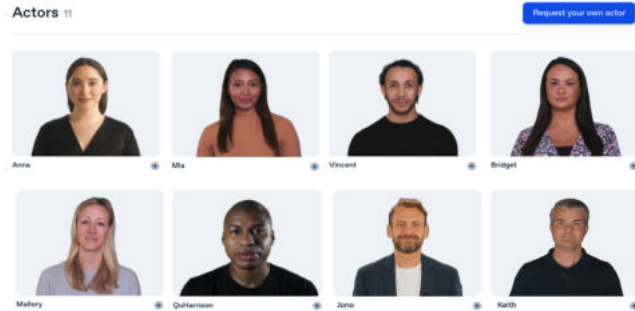
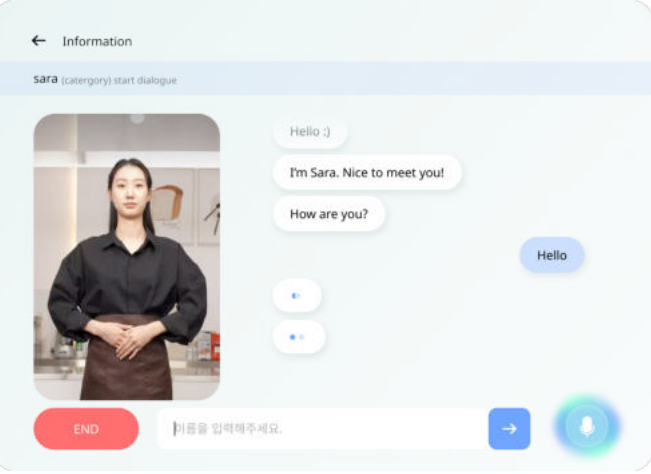
240+ video clips of tour location
Attractions, Accommodations, Restaurants, and Cultural facilities)

Device

Kiosk recommended



Abstract : KClone vs Competitors

	Interactivity with text, voice	Face and Voice Customization	Synthesis of outfits & background	Gesture Customization
<div><div>Existing chat,voice chat (Ex. Intercom)</div><div></div></div>	<div><div></div><div>text or Voice</div></div>	<div><div></div><div>Limited to video clips</div></div>	<div><div></div></div>	<div><div></div></div>
<div><div>Virtual human solutions (Ex. Synthesia)</div><div></div></div>	<div><div></div><div>Limited to video clips</div></div>	<div><div></div><div>Limited customization (face, voice) Long processing time, High cost</div></div>	<div><div></div><div>limitedly customizable</div></div>	<div><div></div></div>
<div><div>Kclone</div><div></div></div>	<div><div></div><div>text, voices, faces, gestures</div></div>	<div><div></div><div>Easy customization (faec, voice) Create virtual face</div></div>	<div><div></div><div>Synthesize various kinds of outfits & backgrounds</div></div>	<div><div></div><div>7,000+ unique gestures Supports customized gestures</div></div>

Pricing plans *to be determined

Starter Include watermark

Conversation Option

- Support **1,000** dialogues in total
(Extra charge: \$00 for +1K)

Virtual Human Option

- Number of human: **1 character**
- Basic option (hair, style, face, voice)
- Provide all language
KOR, CHN, JPN, ENG
- Provides basic backgrounds

Technical Support

- E-mail

Professional

Conversation Option

- Support **5,000** dialogues in total
(Extra charge: \$00 for +1K)
- Save conversation history: **3 months**

Virtual Human Option

- Number of human: **3 character**
- **Basic option + Premium option**
(hair, style, face, voice)
- Provide all language
KOR, CHN, JPN, ENG
- Provides all backgrounds

Technical Support

- E-mail, Phone

Enterprise

Conversation Option

- Support **unlimited conversations**
- Save conversation history: **12 months**

Virtual Human Option

- Number of human: **Unlimited**
- **Option Customizable**
(hair, style, face, voice)
- Provide all language
KOR, CHN, JPN, ENG
- Provides all backgrounds

Technical Support

- E-mail, Phone, Remote
- Emergency service (24/7)

Partnership



Leadership and History of KLone

Boards

CEO

Jin, Seunghyuk

B.Eng. Hanyang Univ.,
(Electronic Engineering)
Serial Entrepreneur with 3 startups

CRO

Kang, Jisu

Master's degree. KAIST
(Electrical and Electronics)
AI Researcher, "Aizen Global"

VP

Kim, Seonggon

B.Eng. Seoul National Univ.,
(Industrial Engineering)
Former PwC Strategy&

COO

Eun, Seungah

B.A. Korea Univ.,
(Japanes Lang. & Culture)
CSO at D2C Startup ‘Milimeal’

History

2021	12	Participate MPAI-MMC Framework Licence
	10	Won 2 CES Innovation Awards in Software & Mobile app field Raised pre-A investment with post-value of USD 40M
	09	Partnership with Smilegate, NC Soft, Lg U+, Kyowon 1st prize, Try Everything IR pitching contest
	08	Partnership with Kakaohair, KS&Pick, GKL
	07	Partnership with KT CS, LG Electronics
2020	06	Held a Metabus medal ceremony for Korean War veterans Raised Series A investment from Kakao Investment
	10	Awarded for TIPS program
	02	Raised seed investment from Bluepoint partners



Homepage

<https://www.Klleon.io/>

Official LinkedIn

<https://www.linkedin.com/company/klleon/>

Official Contact Mail

contact@klleon.io