



MWC Barcelona 2021

KOREA PAVILION

28 June - 01 July. 2021



5G / Telecommunications

● 4DREPLAY	/ 12
● Contela Inc.	/ 13
● FRTek CO., LTD.	/ 14
● Gigalane Co., Ltd.	/ 15
● Innertron, Inc.	/ 16
● MAIN INFO	/ 17
● RF Morecom	/ 18
● RTx Technology Co., Ltd.	/ 19
● SRTechnology Corporate	/ 20
● TJ innovation	/ 21
● UBCS CO., LTD.	/ 22
● Wevercomm Co., Ltd.	/ 23

4DREPLAY



+82-2-445.8281

contact@4dreplay.com

www.4dreplay.com

https://www.facebook.com/4DREPLAY

Company Introduction

"CREATING EXPERIENCES"

4DREPLAY is a media technology company that brings multi angle highlights to a variety of professional sports, movies, and events. We provide time-slicing video that showcases any time, any angle highlights with an unprecedented level of detail.

We recently provided 4DReplay, the time-slice highlights, to sports fans during 19-20 NBA playoffs and 2020 US Open Tennis. We also provided sports fans with 4DLive, the multi-angle and multi-view live streaming service, for the first time in the US during the 2020 MLB NLCS and World Series with Fox Sports and Samsung.



Product Details

4DReplay

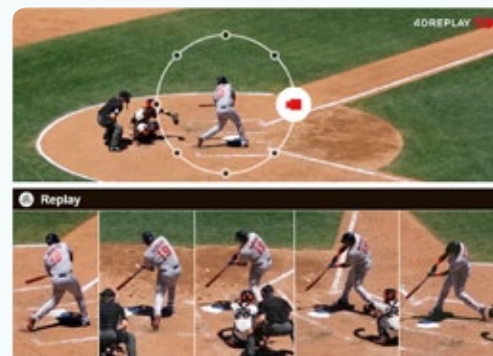
The "4DReplay" system generates 360-degree time-slice highlight videos in near real-time. The technology makes it possible to create a video that seems to transcend space and time through the clever positioning and angling of dozens of cameras.

For the past 5 years, the "4DReplay" solution has contributed to enhancing the fan experience through 1,200+ events globally, in partnership with global telecommunications service providers, broadcasting companies, professional teams, and sports associations, such as Bell Canada, Softbank Japan, ESPN, FOX TV, MLB, and NBA.

4DLive

The "4DLive" interactive live-streaming service is the latest technology innovation from 4DREPLAY, which adopted a cloud technology on top of the 4DReplay system. It enables multiple users to enjoy live events in their own ways on mobile devices, using a high-speed 5G mobile network. The users can play a multi-angle video while controlling the speed of the video.

4DREPLAY has landed the "4DLive" technology in multiple networks, pioneering the 5G services, such as TSN 5G View / Vision 5G RDS in Canada's top sports networks TSN and RDS, FoxSports 5G View Powered by Samsung, and Softbank's 5G mobile communications service.



Contela Inc.



+82-31-710-4800

june.p@contela.com

www.contela.com

https://www.linkedin.com/in/park-june-97963b147/

Company Introduction

Contela is a wireless telecommunication equipment developer and manufacturer based in South Korea. Its first success story starts with developing the first private network solution, Wireless Office Solution. The solution came from the CEO's idea to help 40,000 workers at a dockyard communicate more efficiently and easily. It was successful enough to make the company recognized for its wireless telecommunication solutions nationwide. And a decade later, in 2013, Contela became the first company that commercialized 3G and LTE small cell internationally. Despite of unfavorable investment climate in LTE these days, Contela picked up its glory again with 5G core last year and along with 5G small cell on the way. Contela will never stop being the first, evolution, and limitless.

Product Details

LTE Private Network Solution

Small cell is a low-powered radio access node that covers a small range from a few hundred square feet to several thousand square feet. With wireless data traffic growing at an unprecedented rate, service operators have been conducting small cell trials and deploying small cells to enhance optimization, densification, and capacity requirements. Contela's small cell solutions have unique advantages to help carriers implement an efficient wireless ecosystem. The technology of the virtualized EPC of Contela is at the highest level by having all the core network nodes. On top of that, we also supply the device for the access network to complete the end-to-end solutions.

- operational in various frequency bands and bandwidths
- multiple transmit power configuration
- versatile division duplex for FDD and TDD
- fulfills 3GPP standards

5G In-Building Solution

The in-building solution provides network service covering where no radio approaches such as inside buildings. Since 5G frequency has a very high-frequency band with high propagation loss, current technology makes it difficult for the frequency of 28GHz band to pass a wall. To overcome the indoor shadow area, Contela's layer split hub helps to expand 5G coverage just like DAS works for 4G. Using LSH lessens high installation costs as it operates together with the existing DASs. From DU to AAU, our total solution enhances the customer's experience with 5G.



FRTek CO., LTD.



+82-31-470-1521

www.frttek.com

pcs0720@frtek.com

Company Introduction

FRTek is a Wireless Telecom Industry Leader with 20+ years of experience in RF Design and Manufacturing. In Partnership with Korea Telecom, FRTek deployed the World's first 5G commercial DAS at the 2018 Pyeong Chang Winter Olympics, and our latest product PrimAer (28GHz 5G wireless Optical Repeater) has lead us in becoming partners with the greatest operators in the US and drawing attention all around the world. FRTek has both TDD and FDD solutions with integrated spectrum analyzer and PIM testing capabilities. FRTek is looking forward to seeing you at MWC in Barcelona! Booth 7F21GH.

Product Details

PrimAer 28

PrimAer 28 is a 5G repeater system that can provide and/or enhance high quality telecommunications service both in-building & outdoors. PrimAer 28 System can provide mmWave 28GHz frequency band coverage to all venues.

System frequency band :

- mmWave 28GHz SISO/MIMO (27.5GHz ~ 28.35GHz, BW 850MHz)

PrimAer 28 system is configured with a Donor Unit (DU), a Service Unit (SU_C: Cascading unit or SU_E: End unit), and a Rectifier. 1 DU can operate up to 4 Service Units connected in a cascade configuration



Gigalane Co., Ltd.



+82-10-9130-7080

<http://www.gigalane.com/>

yenni@gigalane.com

Company Introduction

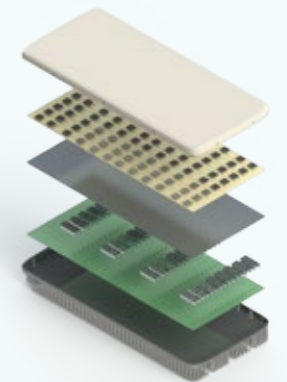
Gigalane, Korea's pioneer in high-frequency connectivity components, has always been a trustworthy business partner to global tech innovators. Gigalane's RF business is expanding its business domain based on the 'world's best, only in Korea' high-frequency RF technology and will lead the next 5G network era. The RF business is developing the international RF component providers through a reliable supply of active RF equipment, as well as continuous research and development for Korea's biggest network communication and defense industries. Gigalane aims for being "Number one", "First ever" and "The only" and is committed to delivering the best value to customers.

Product Details

Gigalane Antenna solution

Gigalane's Massive MIMO Unit is built to meet the needs of customers by supporting all defined 5G spectrum worldwide and offering a variety of form factors that can be optimally used for different site requirements.

Gigalane's small-cell antennas provide antenna solutions applicable to a variety of networks to improve capacity and coverage in indoor and outdoor distributed antenna system(DAS) and small cell systems.



Board to Board connector solution

Gigalane Board-to-Board(GBB) and Gigalane Direct Board connector(GDBC) connectors are developed for board-to-board and board-to-module RF interconnections.

Series GBB offers the best in class working range (axial and radial misalignment) and excellent RF performance.

Series GDBC is the next generation board-to-board/module RF interconnection that replace the conventional three-piece connector with the patented one-piece design.



Innertron, Inc.



+82-32-320-2500

www.innertron.com

bsjeong@innertron.com

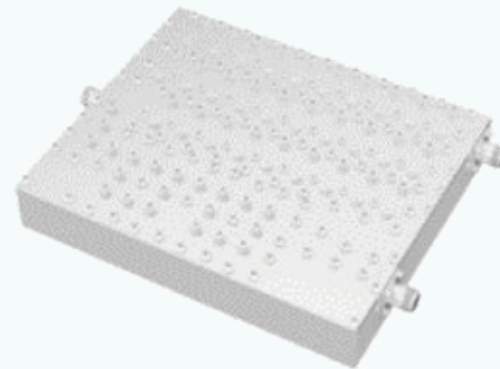
Company Introduction

Innertron Utilizes a wide range of tools in developing and modifying product designs. Our engineering teams apply filter synthesis software to model and design components, and subsequently verify and qualify these designs through sophisticated test equipment, methodology and software.

Product Details

Small Cavity Duplexer

It is a part for sharing the transmitter and receiver in one antenna. When the transmit/receive frequency is different, it is made by attaching a BPF that passes only the frequency of the transmitter and a BPF that passes only the frequency of the receiver. In some cases, a notch filter is attached to the interruption to induce isolation of the transmitting and receiving end.



Band Pass Filter

A filter that passes only a specific band with a pass start frequency and a stopband frequency. In wireless communication, it is widely used for identifying channels and for image removal.



MAIN INFO



+82-54-274-1003

http://maininfo.co.kr/

maininfo777@gmail.com

https://youtube.com/channel/UCILoWqiPOdSoEJ1ci0lk_kw

Company Introduction

MAIN INFO is a fast-growing company located in South Korea. We develop driver driving assistance devices and self-driving car platforms by using hologram navigation, wireless chargers, motion sensors, voice recognition, and blockchain technologies. We have transferred motion sensor and voice recognition technologies from Samsung electronics and ETRI respectively. HOLO NAVI is our brand name. Recently HOLO NAVI M 25 (flexible display) and HOLO NAVI M45 (in-car COVID 19 testing kit) attracted major car companies such as BMW and Volkswagen. Our first product, HOLO NAVI M10 (HUD), was developed in 2015 and sold in bulk amounts. HOLO NAVI M 15 (in-car fast wireless charger) was released in 2019 and exported to more than 10 countries. HOLO NAVI M20 has its prototype and is ready for mass production. Moreover, our product line continues through HOLO NAVI M50.

MAIN INFO received 100 million Korean won at the national crowdfunding contest in 2016. Our company founder Mr. Park Ik Hyun has been selected as a committee for the economic missions of the South Korean President to 8 countries including France, Denmark, Germany, Vietnam, Russia, Sweden and etc. During these missions, he was able to sign MOU contracts worth around 70 million USD. Moreover, our company has been regularly participating in international exhibitions. Most recent events we featured our products are CES 2021 and EUREKA 2020. We are planning to visit IFA 2021 in September. During these events, we were able to meet with buyers from all around the world. Most importantly, we had the chance to talk to major car manufacturers including BMW and Volkswagen. Even though we have been targeting the aftermarket car industry, in the near future, we would like to offer our solutions to car manufacturers during the manufacturing process.

Product Details

HOLO NAVI M15

HOLO NAVI M 15 is an in-car fast wireless charger device. Motion slides with infrared sensors, anti-collision support / stable grip, fast and safe charging with smart IC chips - 360 degree rotary holder ventilator, C-type cable connection, KC, CE, safety certification test products, the smartphone recognition sensor is equipped with a variety of third-generation, up-to-date expansion coils to charge the mobile phone even if it does not remove the case or has a card or business card. A must have item for every driver as we have been spending more and more time inside our car recently because of COVID 19 and so we need to charge our cellphones in our cars. We used steel to make the engine of the product which makes it more durable and appealing. When we developed HOLO NAVI M15, we used motion sensor technology which we transferred from Samsung Electronics. New model smartphones can be charged very fast and we offer wireless fast charging receiver for older model cellphones to get wireless charging. After installing our device inside your car, you do not have any problems with wires. It is very comfortable for drivers who travel to far away places without distracting about charging the cellphone.



HOLO NAVI M22

HOLO NAVI M22 is an updated version of HOLO NAVI M20. M22 has a very compact and unique design. It opens automatically and clamps once you bring your cellphone close to it. C type charging is supported now. Moreover, M22 has many technical improvements. From previous 5W charging capacity, it now has been equipped with 15W charging power. To maintain the tight fixing, we added one more bracket at the middle back of the device while it still has its suction cup and air vent fixing options. HOLO NAVI app has been updated and is ready to use now. M22 represents some same functions with M20 such as changing music, receiving or ignoring phone calls by sweeping your hand to the right or to the left. To the right means approval while to the left gives the no sign. In the music player to the right starts next music while to the left goes back to the previous music. We also added navigation function in our HOLO NAVI app which can be accessed by pressing the home button located at the front bottom of the device. At the same time, it can be viewed as a home button which gives convenience to users / drivers while driving. The height of the device is 135mm, width is 70mm, width (calculated with air vent) is 101mm. Furthermore, M22 has been equipped with infrared sensors which shows the charging status of the cellphone. The sensors embedded inside the device enables the device to detect motions without mistake.



HOLO NAVI M30

Our company's product HOLO NAVI M30 will feature an advertisement platform for the driver and passengers. Our device will make it possible to collect DATA on the road from the driver's POV, send the data to a cloud database via WIFI / 4G / 5G, produce advertisement through hologram images and voice according to the processed data. Furthermore our goal with this product is to implement it to an autonomous driving platform. Our device will define where to place your mobile phone inside your car and boost driving efficiency and interest while at the same time collect data from various drivers to create an advertisement platform and an AI driving program. Customers want driving to become more comfortable and easy. There are no devices for vehicles that include holograms, motion, and voice sensors.



RF Morecom



+82-70-7609-8785
rachel@rfmkorea.com

www.rfmkorea.com

Company Introduction

RF Morecom Korea is a leader of development and manufacturing for RF &M/W filter and divider/combiner, cable & connector up to 60GHz, and PA module/RF repeater in Korea. We are qualified and experienced for more than 20 years in RF&M/W market and support our valuable customers with high-end technology solution. We have high-end products line for 5G (sub 6 and mmWave)

Product Details

Ceramic Waveguide filter

5G Filter Solution for Massive mimo beamforming antenna (Ceramic Waveguide Filter)

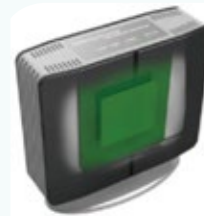
Ultra small size 3.5GHz Ceramic filter
SMD type
Medium power
Low cost



LTE and 5G mobile coverage solution(Digital Repeater/DSP module)

Digital ICS Repeater
FDD/TDD for 4G and 5G from 700Mhz to 3.5GHz for indoor and outdoor from 0.1watt to 10watt.

DSP Module
Digital Signal Processing Module with 32 channel selection filtering for mobile network/public safety/military application.



5G wideband combiner

Multi-band Combiner
3G+LTE+5G
PIM 160dBc
1dB Loss



mmWave5G cable and connector

Up to 60GHz cable
Unbelievable flexibility.
Excellent stable phase matching.
Excellent strong phase stability.
Very low loss.



RTx Technology Co., Ltd.



+82-31-647-6780
ejkim@rtxtech.com

www.rtxtech.com

Company Introduction

RTx is a leading manufacturer of Filter, Duplexer, Multiplexer, VCO, PLL Synthesizer, HPA,LPA and Fiber Optic Transceiver.

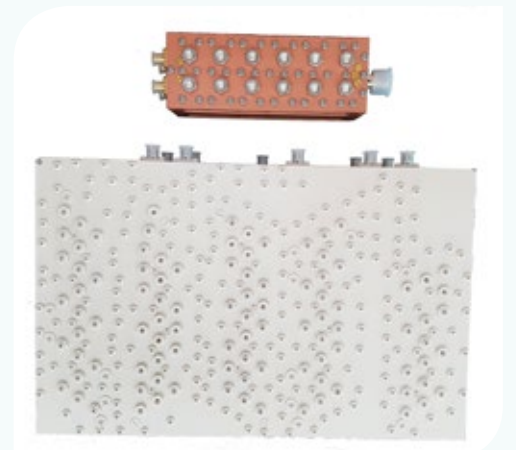
RTx has been established in 1999 and focused on developing RF and Microwave Components and modules for various kinds of wireless systems.

Under our mottos of value creation, high quality and customer satisfaction, Our employees and executives are committed to creating high quality products, providing customer support and generating value for our customers worldwide. We make filters that cover the frequency range from 10MHz to 100GHz

Product Details

Cavity filter

RTx Technology provide cavity filters from range of 100MHz to 15GHz. Our cavity items have low insertion loss, excellent temperature stability and high power capability. In addition, it is possible to make multiplexers from 3 to 11 bands and it can offer excellent characteristics. We have several designs that meet various customer requests as well as custom designs to fit the needs of point to point & multipoint radio market.



Ceramic filter

RTx Technology provides excellent ceramic solutions for customers all over the world. We can make ceramic products from 300MHz to 6GHz as TEM mode ceramic technology.

SRTechnology Corporate



+82-2-866-9003

www.srtechnology.com/

sale@srtechnology.com

ID : SRTechnology

SRTechnology Corporate

Company Introduction

SRTechnology specializes in designing and manufacturing passive devices. R&D is our top priority, offering highly reliable products. Our goal is to work closely with our customers to on time,optimize the customer's project outcomes. Our main products include Cavity Filters, Power Dividers, Terminations, Attenuators.

Why SRTechnology? • SRT has supplied thousands of components to telecommunication, defense and commercial markets • SRT has a 3-year product warranty • SRT stocks sufficient quantities of products on the shelf for immediate delivery • Fully accumulated product, Production, R&D experience information.

Product Details

SRT Cavity Filters

SRT cavity filters offer low PIM, High power handling, low insertion loss and excellent attenuation value and Excellent temperature stability. The standard delivery is 2~3 weeks.



SRT Power Divider

SRT Power Divider offers World best Insertion loss, Isolation, and V.S.W.R. We have up to 25~40GHz Dividers with input power of 10Watt. The standard delivery is 1~2weeks. Customized design is available upon request



SRT Attenuator

SRT Attenuator provides Minimize heatsink and very reliable power capacity. Attenuators with (2,5,30,50,100,500Watt) available, best performance at 3G,4G and 5G LTE.



SRT Termination

SRT Termination offers with Various type of connectors available like, SMA, N, 4.13/10 and 7/16DIN with Various Power (1 ~ 500Watt) and Wide frequency range (DC~18GHz).



TJ innovation



+82-32-223-6700

www.tj-innovation.com

contact@tj-innovation.com

Company Introduction

TJ-Innovation is a repeater company that develops and manufactures RF repeater systems based on well-experienced digital design capabilities.

Our company was founded in 2006 under the three core brand name of the company: Technology, Join, and Innovation, and has grown into a mid-sized company by experiencing ceaseless product development and market entry.

ICS is a signature product of our company that has been recognized for its reliability from customers through accumulated production results. On the one hand, we are proving our digital design skills by successfully launching digital DAS and mmWave products.

TJ will continue to make efforts to overcome the limitations of technology in line with the market trend beyond 5G.

Product Details

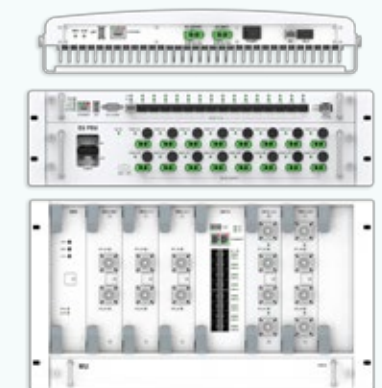
HIT-1821

- Supports up to 3 independent con-current carriers at the same time over the entire band
- Supports frequency/BW setup for an arbitrary mobile carrier over the entire band
- Optimized design of delay time for 3G/4G single band FDD configuration
- 5G sub-6 FDD NR can be covered as well thanks to minimized system delay
- Carrier information acquisition from embedded modem
- Automatic frequency configuration setup by analyzing carrier information
- Save CAPEX where co-site installation is necessary for multiple mobile carriers
- Save OPEX for frequency re-farming cases such as 3G sunset



SDM 1735-SB

- Supports patent-pending technology that helps to reduce uplink noise of NodeB dramatically, named 'Noise reduction algorithm by using RRC filter'
- Built-in POI offers appropriate matching between NodeB and DAS system, and achieves environment-friendly function by making use of high power RF input thru as a backup power source for DAS.
- Minimized latency to cancel the interference between DAS and BTS
- 900MHz RFID interference cancellation
- Delay correction function between SU units
- TDD sync acquisition by demodulating input signal
- SU antenna monitoring function



UBCS CO., LTD.



+82-31-213-9455

cjh@ubcs.co.kr

<http://www.ubcs.co.kr/main>

<https://www.linkedin.com/in/jinhong-choi-b2076b1b3>

Company Introduction

UBCS has provided SK Telecom, Korea's telecommunications company, with one of the best solutions for building base stations and in-building systems (networks) for the last several years.

UBCS's major products provide interconnecting solutions in RF and Optical. They include RF Connectors, Jumper & Feeder Cable Assemblies, 5G Splitters (Power Dividers), 5G Combiners, 5G Network Equipment Components, and others.

We believe that UBCS is well-positioned to respond to this global market trend. With the experience of providing Korea's largest telecommunications company with its products, UBCS will continue its effort to provide one of the best "connecting" solutions in the global telecommunications industry.

Product Details

RF Components (5G)

UBCS's RF components are widely used RF & Passive applications (Applicable to "5G Spectrum-Band" of frequencies up to 3.9 GHz), and are mainly used in various business areas such as mobile communication network, in-building (DAS) and indoor network infrastructure.

Main Items

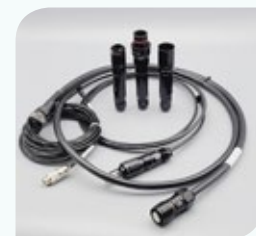
- RF Coaxial Connectors
- Power Dividers & Splitters
- Combiners

Main Applications

- Outdoor & Indoor Networks
- Mobile Communication Networks (Wireless Base Stations)
- In-building Networks



5G Network Equipment Components



UBCS develops components used in 5G network equipment for many of the recognized global companies, and it has been providing solutions to domestic mobile network operators. UBCS's 5G network equipment components are mainly used to connect 5G repeaters and rectifiers in an outdoor network environment. (Our products are compatible with those of Samsung, Nokia, and Ericsson)

Main Items

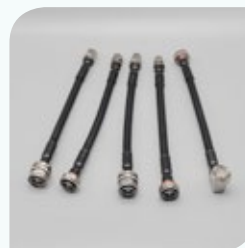
- Optical & Alarm Cable Assemblies
- AC/DC Power Connectors
- Waterproof Kits

Jumper & Feeder Cable Assemblies

UBCS's Cable assemblies are used for the construction of communication networks, and the various products are available according to the installation environment and specifications and standards required. Like other products, the company's cable assemblies can be used in various business areas such as mobile communication network, in-Building (DAS) and indoor coverage such as metro station, tunnel and etc.

Main Applications

- Outdoor & Indoor Networks
- Mobile Communication Networks (Wireless Base Stations)
- In-building Networks



Wevercomm Co., Ltd.



+82-31-223-3197

graham.kim@wevercomm.com

www.wevercomm.com

Company Introduction

WEVERCOMM is one of the global leaders in the designing, manufacturing and marketing of RF Passive and Active components. Providing high quality, reliable products is our primary focus. WEVERCOMM is based in KOREA and we have a unique capability to provide high quality components for Commercial for 5G, DAS, Military, Public Safety, IoT. We provide all solutions with RF Filters, Combiners/Divider, Couplers, TMA, Power Amplifiers, POI, etc. WEVERCOMM is certified for ISO-9001, ISO-14001, an authorized supplier for major service operators and integrators. We supply high quality with very competitive prices to our customers.

Product Details

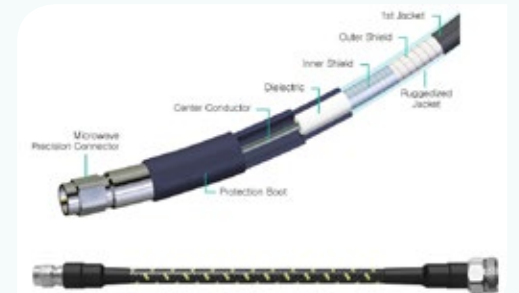
5G Product

Wevercomm has 5G products Cavity Filter and Ceramic Waveguide Filter, Power Divider/Combiner, Isolator/Circulator. All products can cover the frequency 10MHz to 40GHz.



High Frequency Cable

Wevercomm has mmWave/5G high performance cable assembly. This Cable assembly secured low loss, high frequency fusion material processing technology for mmWave and 5G.



High Power Amplifier

Wevercomm's High Power Amplifier incorporate state-of-the-art GaN, LDMOS, MOSFET, GaAsFET technologies. Our extensive library of product designs includes many solutions ranging from basic-function RF Power Amplifier modules to complete, multifunction HPA systems.

