

S2000e 5G Gateway

High-speed, multi-carrier 5G gateway/router for mission critical or data intensive applications.

Top Features:

- 5G NR mmW and Sub6 with 4G CAT 22 LTE fallback
- Provides up to 4.9 Gbps for any host routing system or end point
- Provides ultra-low latency for industrial automation or XR use cases
- Multi-carrier & Dual SIM support on commercial and private networks

Business Applications:

SD-WAN / SDN Adapter

- Primary or Failover Internet access
- Connectivity for SMB & Enterprise
- Ethernet or USB connectivity

Remote Routing

- Surveillance enclosures
- Remote kiosks & ATM
- Digital signage

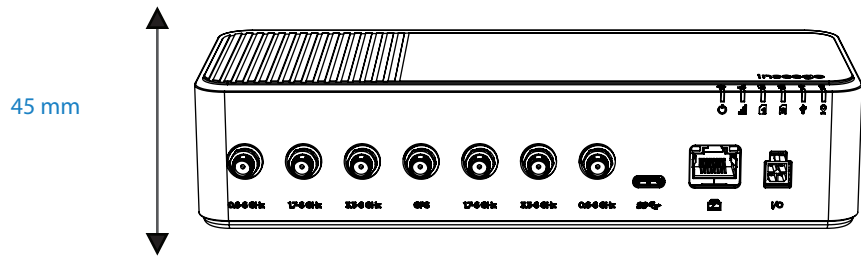
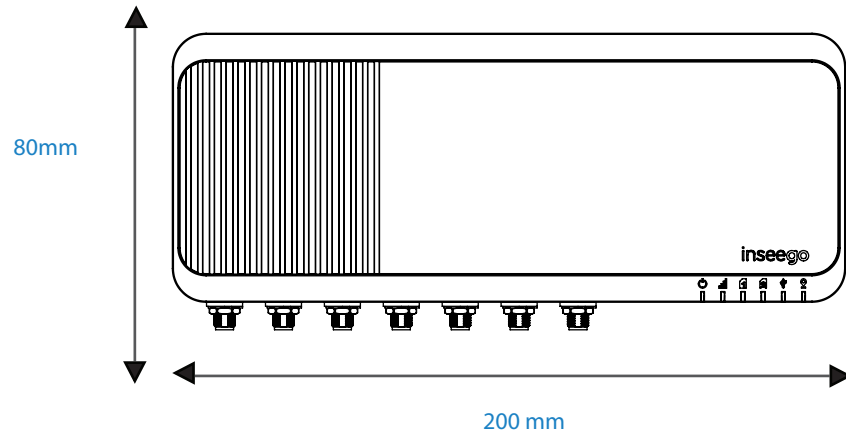
Indoor 5G Small Cells

- Industrial automation
- Critical IoT
- Support for indoor line of sight mmWave connectivity



S2000e 5G Gateway

Hardware Measurements :



Housing

- C: Dark Grey, PMS 425 C,
- M: PC/ABS Thermoplastic,
- F: Textured in Mold, VDI 24

Dimensions & Weight

- 200 x 80 x 45 mm
- 500 g

Operating Temperature

- -30°C to 70°C

Storage Temperature

- -40°C to 85°C

Region

- Global

Carrier Acceptance

Phase I:

- Verizon
- T-Mobile
- USCC
- Telia
- Generic EU
- Generic JP

Phase II*:

- AT&T*
- Rogers*
- Bell*
- TELUS*
- Singtel*
- Spark*
- Optus*

Input Output

- 2x Digital input/output with ignition sense and voltage detect

Power + I/O Port

- Included: 4 Pin AC Power Supply
- Optional: 4 Pin DC Power and I/O Supply, 30W PoE Injector, 60W PoE Injector

External Modem Support

- Supports Skyus DS2 and Skyus SC USB WAN Modems*
- Supports Inseego 5G NR WAN Modems*
- Intelligent WAN Prioritization

*Will be supported after launch

LEDS

- 1x LED for Device Health
- 1x LED for Cellular Signal
- 2x LED for SIM Status
- 1x LED for GPS
- 1x LED for USB Status

SIM

- 2x User Accessible 4FF Nano SIM

Bluetooth

Bluetooth for Inseego Connect Mobile Installation App only

inseego

S20003 5G Gateway

Antennas & Brackets:

Antennas Options

Dipole/Whip Antenna – Office Install / Bench Testing

- 0.6-6 GHz (CELL 1 and CELL 6)
- 1.45-6 GHz (CELL 2, 3, and 5)
- 3.3-6 GHz (CELL 4; or for CBRS, use on CELL 1, 2, 4, and 6) Available May 17

Remote 7-1 Antenna – Enclosure/Cabinet/Kiosk/Vending Install

- Cell: 2x 0.6-6 GHz, 3x 1.45-6 GHz, 1x 3.3-6 GHz
- GPS: L1/L5 Active GPS Element (28 dBi gain)
- SMA, 2m Length, 1" Thread, IP67 Available May 17

Wall Mount 6-1 Antenna – High Gain Office Install

- Cell: 2x 0.6-6 GHz, 3x 1.45-6 GHz, 1x 3.3-6 GHz
- SMA, 2m Length, 1" Thread, IP67
- In Prototype Phase; Need Demand to Complete

Brackets

DIN Bracket Kit

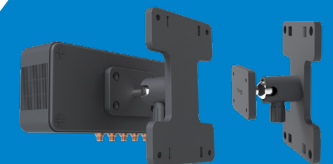
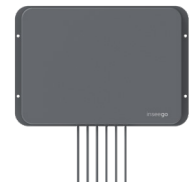
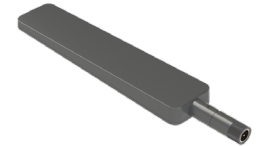
- Manufacturing or Surveillance Cabinets/Enclosures, Kiosk/Vending Machines
- Includes: DIN Bracket, DIN Clip, Screws

Fixed Bracket Kit

- Wall and Pole Mounting
- Includes: Fixed Bracket, Screws, Wall Anchors, V Bolts, Nuts
- NOTE: V Bolts Fit 1.625 – 2.25" Diameter Poles (Standard Pole Dims) and Superstrut Framing

Adjustable Bracket Kit

- Adjustable/Directional Wall and Pole Mounting
- Includes: Adjustable Bracket, Screws, Wall Anchors, V Bolts, Nuts



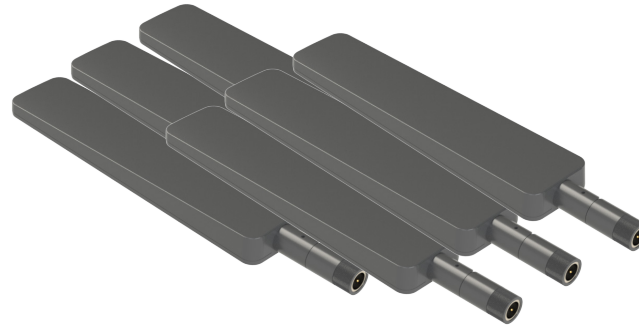
S20003 5G Gateway

Antennas & Brackets:

Typical Installations Types

Office Install / Bench Testing

- S2000e Device
- Dipole Antenna Kit
- Wall Mount Kit
- POE Injector
- Inseego Connect



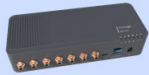





Enclosure/Cabinet/Kiosk/Vending Install

- S2000e Device
- Remote 7-1 Antenna
- DIN Rail Bracket Kit
- DC Power + I/O Cable
- Inseego Connect



S2000e 5G Gateway

Competitive Matrix

	Inseego 5G S2000e	Cradlepoint CBA850-1200M	Cradlepoint W2000	Perle IRG7000	Cisco Catalyst	Digi EX15
						
5G	Sub6 and mmW	N/A	Sub6	4.5Gbps downlink and 660Mbps uplink speeds LTE Cat-20	Sub6	N/A
4G	4G LTE Cat 22	4G LTE CAT 18	4G LTE Cat 20		4G LTE CAT 18	4G LTE CAT 4, 6, 11, 18
MIMO	4x4 MU-MIMO	2x2 or 4x4 MIMO	4x4 MIMO	4x4 MIMO	4x4 MIMO	2 x 2 MIMO
Cellular Antenna Type	Internal omnidirectional antenna TS9 connector is available for external antenna (2x2 support)	SMA & RP -SMA male plugs maximum torque of 0.0 exceed 4 in-lbs	SMA female connectors, external 600 MHz- 6 GHz cellular paddle antennas (4 included)	N/A	4 included SMA-type dipole antennas (5G-ANTM-SMA-D), 4X4 MIMO	(2) 50 Ω SMA (center pin: female)
Chipset	SDX55		Sierra Wireless EM7690	Qualcomm Snapdragon X50	N/A	N/A
Housing Size	230 x 76 x 172.5 mm	122 x 122 x 42mm	190 x 200 x 50 mm	146 x 99 x 45mm	193 x 193 x 38 mm	142 mm x 128 mm x 31 mm
Weight	1.675 kg	0.45 kg	1.27 kg	.59kg	N/A	0.2 kg
Ports	3x LAN 5g/ 1/ 1 Gbps 1x WAN 1 Gbps 2x SIM 1x USB C RJ11 for VoLTE	2x LAN/WAN 1x USB A 2x Serial	2x LAN/WAN 1x USB A 2x SIM RJ45 Console	4x Ethernet 1x USB A 2x Serial	1x 2.5/10 multigigabit RJ45 1x RJ45 console port 1x RJ45 aux port * 4x SMA antenna ports (4x4 MIMO) 1x SMA GPS port *	(2) RJ-45; 10/100/1000 Mbps (auto-sensing) (1) RS-232 (RJ-45)
Wi-Fi Technology	N/A	No	Wi-Fi 6 only for installation	N/A	Wi-Fi 6 and 802.11ac	2.4/5 GHz: 802.11 b/g/n 2.4 GHz; 802.11 n/a/ac 5 GHz
LEDs	one multi-color LED	Power Status Signal Strength Embedded Modem External USB Modems	LED Indicators for Power status Signal strength, Modem status Wifi Broadcast status LAN Activity status Netcloud Account connection	Power Status Serial WWAN GNSS VPN Internet IP54	A tricolor red-green-blue LED displays the cellular gateway status (boot, SIM, OS, signal strength)	LAN (link = solid, flashing = act) WAN (link = solid flashing = act), LTE 5 signal, SIM 1 2 LEDs N/A
IP Rating	N/A	IPv6	N/A - Shock tested	IP54	N/A	N/A
Installation	Self installation by app	Self-installation kit	Indoor mounting kit		Indoor mounting kit	Self-installation by app
Pricing	\$1399 MSRP	~ \$569.00	\$2547 USD (includes Netcloud subscription)	N/A	~ \$629.00	~ \$469.00
Theoretical Max Download Speed	5 Gbps	275 Mbps	3.45 Gbps	100 Mbps	150 mbps	1000 Mbps
Antenna Gain (dBi)	7dBi internal / 12dBi external	2/3 dBi	N/A	N/A	N/A	N/A
Max Transmit Power For internal use only	9 dBm	23 dBm	N/A	N/A	N/A	N/A
Bluetooth	Yes (used for installation only)	N/A	No	No	N/A	No
Power Source	12 volt adapter	12 V DC/ 1.5 A adapter PoE capable	PoE	12/24 VDC Nominal (7 to 36 VDC Range)	AC (PoE optional)	N/A
PoE Spec	N/A	802.3af (15 W) or 802.3at (30W)	— 802.3bt PSE Type 3 (60W) — PoE power injector included	110 / 220 VAC Power supply	15 W	18 VDC 1 A



*Available in future release.

Specifications are subject to change. Please see your Inseego contact for more details.

©2020 Inseego Corp. All rights reserved. The Inseego name and logo are trademarks of Inseego Corp. Other Company, product or service names mentioned herein are the trademarks of their respective owners.