

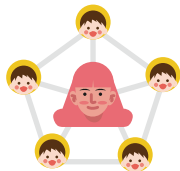


Hello!  
Good to see you.

i-biscuit

'iBiscuit' is a useful service for almost all parents with 3~10-years old children. This service can help to prevent the occurrence of a missing child (up to 5 children) by informing their parents when the child moves away from them in crowded places such as family outings, shopping malls, amusement parks. Moreover, It can be used overseas with no surcharge. 'iBiscuit' service helps them find their child as soon as possible by showing the location of the child in case of the missing child where in 'iBiscuit' App.

#### Service feature



Up to 5 children  
can be connected



Available  
all over the world



No surcharge and  
communication fee





Available for up to 2 days  
\*If you use it 8 hours per day.



Available works with  
iOS / Android app

어디서나 너와 함께  
Anywhere be with U



 radiobiscuits  
 radiobiscuits\_official  
[www.radiobiscuits.com](http://www.radiobiscuits.com)

[biscuit@radiobiscuits.com](mailto:biscuit@radiobiscuits.com) +82 31 994 0912

We are looking for business partners in a variety of fields.

Missing children-prevention services  
available worldwide with no surcharge

ibiscuit  
Manual







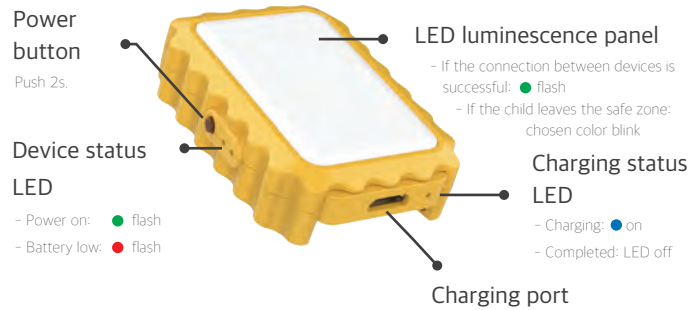
# ibiscuit device

## Device composition



The ibiscuit can connect up to 5 Kid's devices to a single parent's device.

## Device structure



## Link ibiscuit app to device

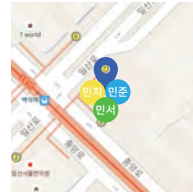
1. Please download the ibiscuit app in Google Play.
2. For the registration to the parent's device on the app, turn on the guardian's device.
3. Please select the country where you use the service.  
*\*If you choose the wrong country, you may not be able to use the service smoothly.*
4. For the registration to the kid's device on the app, turn on the kid's device.  
*\*When connecting more than one kid's device, turn on the devices one by one.*
5. Please put on the kid's name and choose the color.  
- When the child leaves the safe zone, the chosen color LED blinks on the device.
6. The green LED will flash when the devices are connected successfully. - If the device fails to connect, try turning the device back on.

Before using the ibiscuit, the guardian should instruct your child to wait in place, if the vibrations and LED flash on the kid's device.

# ibiscuit app

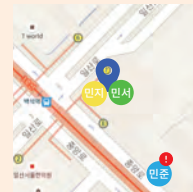
If there are more than 4 connected kid's devices, they will be indicated by numbers instead of icons.

## When your child leaves the safe zone, the app may look like following depending on the situation.



### NORMAL

3 Children are around guardian.

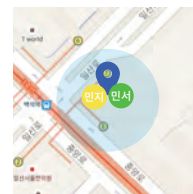


The kid's location is known on the app.

It could be the following situations:

1. The child is left from the safe zone(Outdoor)  
- The device's wireless and location signals have been received.

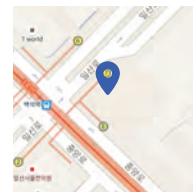
Before use ibiscuit, Please instruct your child to wait in the place if vibration and LED flashes on the kid's device.



The kid's location isn't known on the app.

It could be the following situations:

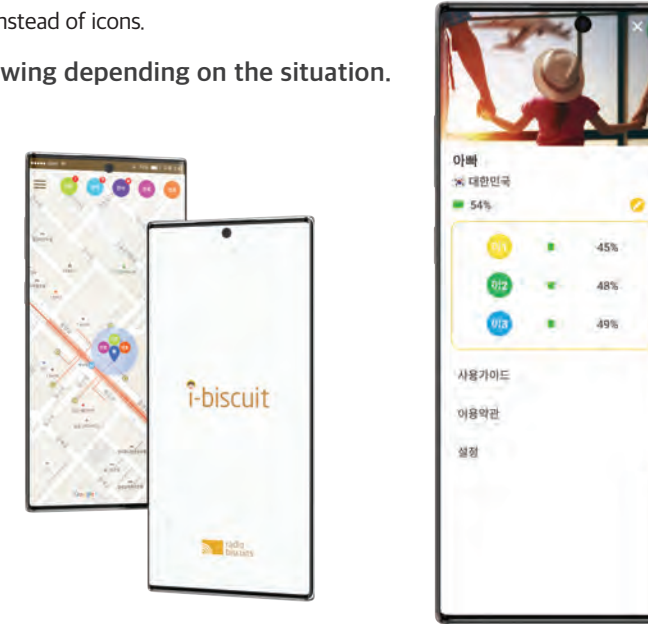
1. The child just breaks away from the safe zone.  
- The device's wireless signal has been received but the location signal doesn't have been received.
2. The child is in the indoor.  
- The exact location of the child is unknown, but the child is in the circle.



The child's device is detecting wireless and location signals.

It could be the following situations:

1. The kid's device power is off.  
- If this situation is continuing even you in the outdoor, The kid's device power was off. Please check the device power.
2. Temporary service disruption  
Please try turning all devices back on.



## You can see what is going on in the top app bar.

**!** The child left the safe zone.  
We'll Mark the kid's locations for you.

**?** The child just left the safe zone.  
The exact location of the child is unknown, but the child is in the circle.

**×** We can't catch any signal.  
Please try turning the device and app back on.



The device's vibration and LED flashes are stop when the child enters the safe zone again.