

# UBCS TEST & MEASUREMENT CABLE ASSEMBLIES

With a maximum frequency of 40 GHz, UBCS' Test Cable Assemblies offer low loss, low VSWR and outstanding performance. Also, they are highly durable.

They can be customized and produced to meet individual requirements. We provide the most high performing measurement and testing solutions for our customers.



## PRODUCT INTRODUCTION

# TEST & MEASUREMENT CABLE ASSEMBLY

UBCS's Test Cable assemblies are mainly used in R&D center that require precise measurement.



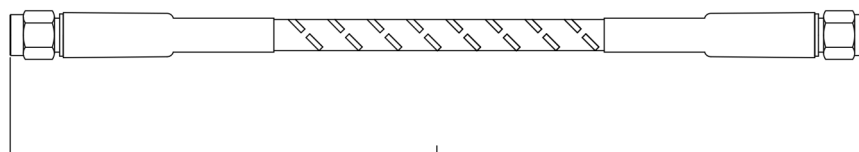
## Features

- Exceptional Performance.
- Excellent Mechanical Stability and Durability.
- Low VSWR.

## Specifications

Frequency Range Up To	DC ~ 26.5 GHz
Insertion Loss	$[(\text{Cable loss} + 0.06) \times \sqrt{f(\text{GHz})}] \times 1.15$
VSWR	1.3:1 max.
Cable Length	Custom Made
Impedance	$50\Omega \pm 5\Omega$
Operating Temperature	-40 °C ~ +70 °C
Waterproof (Protection Class)	IP67
Connector Type	SMA Male Straight

## Drawing



## PRODUCT INTRODUCTION

# TEST & MEASUREMENT CABLE ASSEMBLY

UBCS's Test Cable assemblies are mainly used in R&D center that require precise measurement.



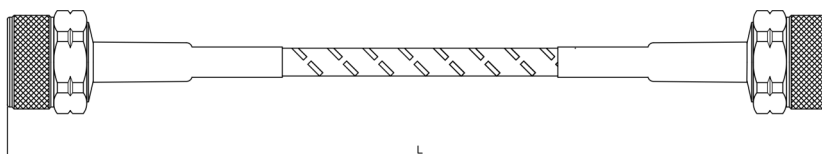
## Features

- Exceptional Performance.
- Excellent Mechanical Stability and Durability.
- Low VSWR.

## Specifications

Frequency Range Up To	DC ~ 11 GHz	
Insertion Loss	$[(\text{Cable loss} + 0.1) \times \sqrt{f(\text{GHz})}] \times 1.15$	
VSWR	1.3:1 max.	
Cable Length	Custom Made	
Impedance	$50\Omega \pm 5\Omega$	
Operating Temperature	$-40\text{ }^{\circ}\text{C} \sim +70\text{ }^{\circ}\text{C}$	
Waterproof (Protection Class)	IP67	
Connector Type (Custom Made)	N Male Straight (A)	N Male Straight (B)
	SMA Male Straight (A)	SMA Male Straight (B)

## Drawing



## PRODUCT INTRODUCTION

# TEST & MEASUREMENT CABLE ASSEMBLY

UBCS's Test Cable assemblies are mainly used in R&D center that require precise measurement.



## Features

- Exceptional Performance.
- Excellent Mechanical Stability and Durability.
- Low VSWR.



## Specifications

Frequency Range Up To	DC ~ 40 GHz
Insertion Loss	$[(\text{Cable loss} + 0.06) \times \sqrt{f(\text{GHz})}] \times 1.15$
VSWR	1.3:1 max.
Cable Length	Custom Made
Impedance	$50\Omega \pm 5\Omega$
Operating Temperature	-40 °C ~ +70 °C
Waterproof (Protection Class)	IP67
Connector Type	2.92mm Male Straight

## PRODUCT INTRODUCTION

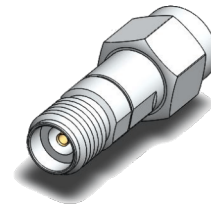
# 2.92MM ADAPTER\_J-P

UBCS's Adapters are generally used as connector savers in order to protect the test ports on high-quality measuring instruments.



## Features

- Exceptional Performance.
- Excellent Mechanical Stability and Durability.
- Low VSWR.



## Specifications

Frequency Range Up To	DC ~ 40 GHz
VSWR	1.3:1 max.
Cable Length	Custom Made
Impedance	50Ω ± 5Ω
Operating Temperature	-40 °C ~ +70 °C
Waterproof (Protection Class)	IP67

## Material and Plating

Body	SUS303 / Passivat
Pin	BeCu / Au
Insulator	PC

## PRODUCT INTRODUCTION

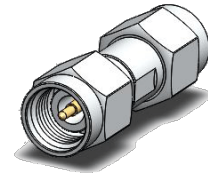
# 2.92MM ADAPTER\_P-P

UBCS's Adapters are generally used as connector savers in order to protect the test ports on high-quality measuring instruments.



## Features

- Exceptional Performance.
- Excellent Mechanical Stability and Durability.
- Low VSWR.



## Specifications

Frequency Range Up To	DC ~ 40 GHz
VSWR	1.3:1 max.
Cable Length	Custom Made
Impedance	50Ω ± 5Ω
Operating Temperature	-40 °C ~ +70 °C
Waterproof (Protection Class)	IP67

## Material and Plating

Body	SUS303 / Passivat
Pin	BeCu / Au
Insulator	PC

## PRODUCT INTRODUCTION

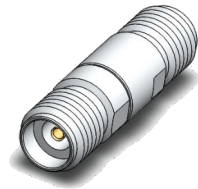
# 2.92MM ADAPTER\_J-J

UBCS's Adapters are generally used as connector savers in order to protect the test ports on high-quality measuring instruments.



## Features

- Exceptional Performance.
- Excellent Mechanical Stability and Durability.
- Low VSWR.



## Specifications

Frequency Range Up To	DC ~ 40 GHz
VSWR	1.3:1 max.
Cable Length	Custom Made
Impedance	50Ω ± 5Ω
Operating Temperature	-40 °C ~ +70 °C
Waterproof (Protection Class)	IP67

## Material and Plating

Body	SUS303 / Passivat
Pin	BeCu / Au
Insulator	PC

Connector		Frequency Range (GHz) - VSWR						
		3GHz	7.5GHz	11GHz	14GHz	18GHz	26.5GHz	40GHz
SMA	Straight	1.15	1.18	1.2	1.2	1.2	1.3	-
	Right Angle	1.15	1.2	1.22	1.25	1.25	-	-
N Type	Straight	1.15	1.18	1.2	1.25	1.3	-	-
	Right Angle	1.2	1.2	-	-	-	-	-
7/16 DIN	Straight	1.2	1.25	-	-	-	-	-
	Right Angle	1.2	1.3	-	-	-	-	-
4.3/10	Straight	1.2	1.27	-	-	-	-	-
	Right Angle	1.2	1.35	-	-	-	-	-
3.5mm	Straight	1.15	1.18	1.2	1.2	1.2	1.25	-
	Right Angle	1.15	1.2	1.22	1.25	1.25	1.3	-
2.92mm	Straight	1.15	1.18	1.2	1.2	1.2	1.25	1.3
	Right Angle	1.15	1.2	1.22	1.25	1.25	1.3	1.4

Cable Assembly		Cable		Frequency Range (GHz) - VSWR			
		Type	Vendor	6GHz	18GHz	26.5GHz	-
SMA	Straight to Straight	SS402, SF141	VIMA	1.15	1.2	1.3	-
		SS405, SF086	VIMA	1.15	1.2	1.3	-
		SR141TA	EXPANTEL	1.15	1.25	1.35	-
		SR086TA	EXPANTEL	1.15	1.25	1.35	-
	Straight to Right Angle	SS402, SF141	VIMA	1.2	1.25	-	-
		SS405, SF086	VIMA	1.2	1.25	-	-
	Right Angle to Right Angle	SS402, SF141	VIMA	1.25	1.35	-	-
		SS405, SF086	VIMA	1.25	1.35	-	-

Cable Assembly		Cable		Frequency Range (GHz) - VSWR			
		Type	Vendor	6GHz	11GHz	18GHz	-
N Type	Straight to Straight	SS402, SF141	VIMA	1.2	1.25	1.3	-
		SS405, SF086	VIMA	1.2	1.25	1.3	-
		SR141TA	EXPANTEL	1.2	1.25	1.35	-
		SR086TA	EXPANTEL	1.2	1.25	1.35	-
	Straight to Right Angle	SS402, SF141	VIMA	1.2	-	-	-
		SS405, SF086	VIMA	1.2	-	-	-
	Right Angle to Right Angle	SS402, SF141	VIMA	1.25	-	-	-
		SS405, SF086	VIMA	1.25	-	-	-

Cable Assembly		Cable		Frequency Range (GHz) - VSWR			
		Type	Vendor	3GHz	4GHz	7.5GHz	-
7/16 DIN	Straight to Straight	SS402, SF141	VIMA	1.2	1.2	1.25	-
		SR141TA	EXPANTEL	1.2	1.2	1.25	-
	Straight to Right Angle	SS402, SF141	VIMA	1.2	1.2	1.3	-
		SR141TA	VIMA	1.2	1.2	1.35	-
	Right Angle to Right Angle	SS402, SF141	VIMA	1.25	1.25	-	-
		SR141TA	VIMA	1.25	1.25	-	-

Cable Assembly		Cable		Frequency Range (GHz) - VSWR			
		Type	Vendor	3GHz	4GHz	6GHz	-
4.3/10	Straight to Straight	SS402, SF141	VIMA	1.2	1.2	1.27	-
	Straight to Right Angle	SS402, SF141	VIMA	1.2	1.2	1.35	-
	Right Angle to Right Angle	SS402, SF141	VIMA	1.25	1.25	-	-



**UBCS CREATIVE NEW VALUE WITH  
NUMBERLESS CHALLENGES**