

# UBCS 5G NETWORK EQUIPMENT COMPONENTS

UBCS' 5G equipment includes optical communications products that connect repeaters and rectifiers and serve an outdoor location. To provide an optimal user experience, they are designed and customized to serve customer needs.

UBCS provides the most robust and high performing solutions with our high-quality products. Our products are compatible with the products of Samsung, Nokia and Ericsson.



## PRODUCT INTRODUCTION

# SAMSUNG DC POWER CONNECTOR

UBCS's DC Power Connectors are mainly used for network equipment. (Repeater)



## Features

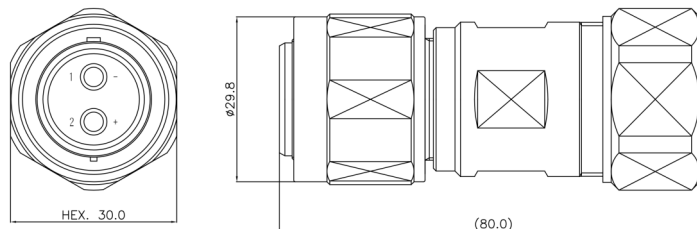
- One-Touch Type (Push-Pull)
- Excellent Durability.
- Waterproofing Function.
- Samsung Network Equipment Applications.



## Specifications

Power	32A Max.
Resistance	AC 1kV, 5mA, 60sec
Insulation Resistance	DC 500V, 10sec, Min 100MΩ
Series Equivalent Resistance	Max 1.0mΩ
Test	DC 48V, 32A
Air Leakage	1.0 bar, 30sec
Cable Type & Length	Custom Made
Waterproof	IP67

## Drawing



## PRODUCT INTRODUCTION

# NOKIA & ERICSSON DC POWER CONNECTOR

UBCS's DC Power Connectors are mainly used for network equipment. (Repeater)



## Features

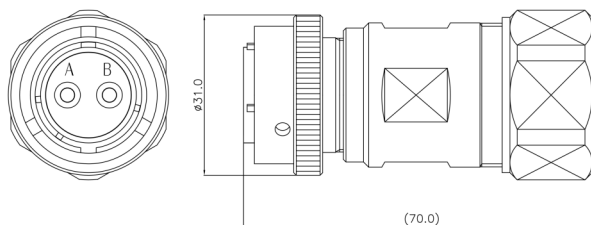
- One-Touch Type (Push-Pull)
- Excellent Durability.
- Waterproofing Function.
- Nokia Network Equipment Applications.



## Specifications

Power	32A Max.
Resistance	AC 1kV, 5mA, 60sec
Insulation Resistance	DC 500V, 10sec, Min 100MΩ
Series Equivalent Resistance	Max 1.0mΩ
Test	DC 48V, 32A
Air Leakage	1.0 bar, 30sec
Cable Type & Length	Custom Made
Waterproof	IP67

## Drawing



## PRODUCT INTRODUCTION

# RECTIFIER DC POWER CONNECTOR

UBCS's DC Power Connectors are mainly used for network equipment. (Rectifier)



## Features

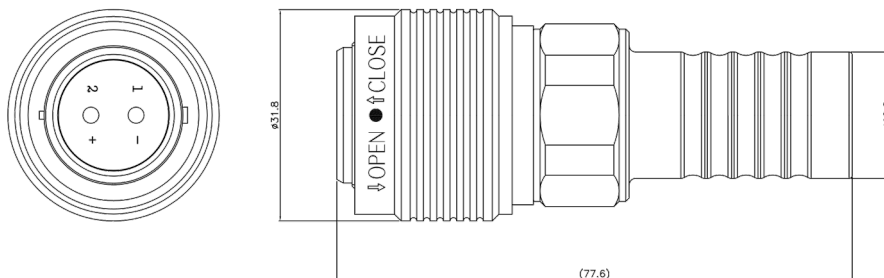
- One-Touch Type (Push-Pull / Solder)
- Excellent Durability.
- Waterproofing Function.
- Male Type



## Specifications

Power	32A Max.
Resistance	AC 1kV, 5mA, 60sec
Insulation Resistance	DC 500V, 10sec, Min 100MΩ
Series Equivalent Resistance	Max 1.0mΩ
Test	DC 48V, 32A
Air Leakage	1.0 bar, 30sec
Cable Type & Length	Custom Made
Waterproof	IP67

## Drawing



## PRODUCT INTRODUCTION

# RECTIFIER DC POWER CONNECTOR

UBCS's DC Power Connectors are mainly used for network equipment. (Rectifier)



## Features

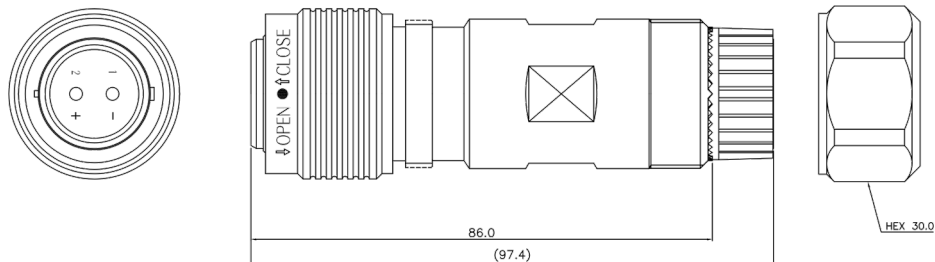
- One-Touch Type (Push-Pull)
- Excellent Durability.
- Waterproofing Function.
- Male Type



## Specifications

Power	32A Max.
Resistance	AC 1kV, 5mA, 60sec
Insulation Resistance	DC 500V, 10sec, Min 100MΩ
Series Equivalent Resistance	Max 1.0mΩ
Test	DC 48V, 32A
Air Leakage	1.0 bar, 30sec
Cable Type & Length	Custom Made
Waterproof	IP67

## Drawing



## PRODUCT INTRODUCTION

# RECTIFIER DC POWER CONNECTOR

UBCS's DC Power Connectors are mainly used for network equipment. (Rectifier)



## Features

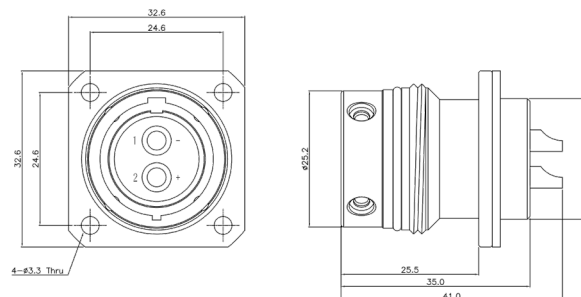
- One-Touch Type (Push-Pull)
- Excellent Durability.
- Waterproofing Function.
- Female Type



## Specifications

Power	32A Max.
Resistance	AC 1kV, 5mA, 60sec
Insulation Resistance	DC 500V, 10sec, Min 100MΩ
Series Equivalent Resistance	Max 1.0mΩ
Test	DC 48V, 32A
Air Leakage	1.0 bar, 30sec
Cable Type & Length	Custom Made
Waterproof	IP67

## Drawing



## PRODUCT INTRODUCTION

# RECTIFIER AC POWER CONNECTOR

UBCS's AC Power Connectors are mainly used for network equipment. (Rectifier)



## Features

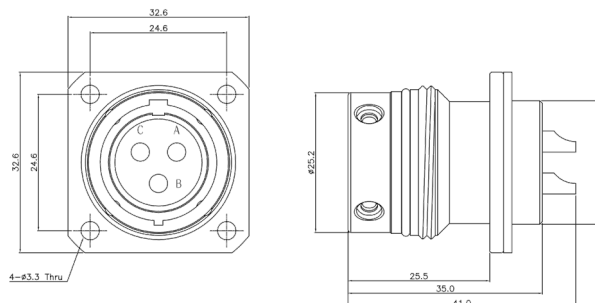
- One-Touch Type (Push-Pull)
- Excellent Durability.
- Waterproofing Function.
- Male Type



## Specifications

Power	32A Max.
Resistance	AC 1kV, 5mA, 60sec
Insulation Resistance	DC 500V, 10sec, Min 100MΩ
Series Equivalent Resistance	Max 1.0mΩ
Test	DC 48V, 32A
Air Leakage	1.0 bar, 30sec
Cable Type & Length	Custom Made
Waterproof	IP67

## Drawing



## PRODUCT INTRODUCTION

# RECTIFIER AC POWER CONNECTOR

UBCS's AC Power Connectors are mainly used for network equipment. (Rectifier)



## Features

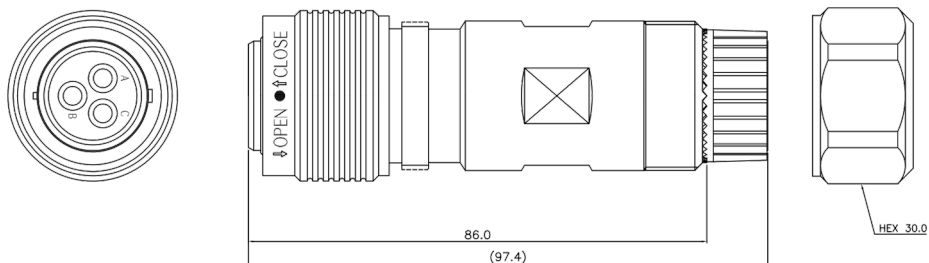
- One-Touch Type (Push-Pull)
- Excellent Durability.
- Waterproofing Function.
- Female Type



## Specifications

Power	32A Max.
Resistance	AC 1kV, 5mA, 60sec
Insulation Resistance	DC 500V, 10sec, Min 100MΩ
Series Equivalent Resistance	Max 1.0mΩ
Test	DC 48V, 32A
Air Leakage	1.0 bar, 30sec
Cable Type & Length	Custom Made
Waterproof	IP67

## Drawing



## PRODUCT INTRODUCTION

# SAMSUNG ALARM CONNECTOR

UBCS's Alarm Connectors are mainly used for network equipment.



## Features

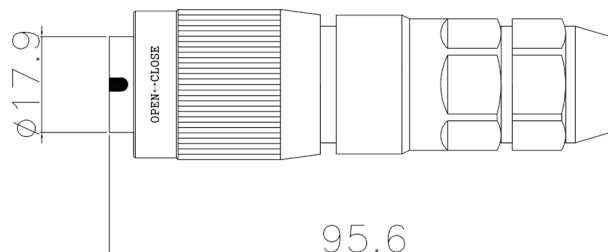
- Excellent Durability.
- Waterproofing Function.



## Specifications

Waterproof	IP67
Operating Temperature	-40°C ~ 100°C
Salt Spray	720 hours
Connector Type	Screw Type

## Drawing



## PRODUCT INTRODUCTION

# RJ45-WATERPROOF KIT

UBCS's Waterproof Kits are mainly used for network equipment.



## Features

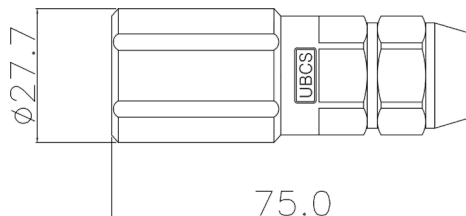
- Excellent Durability.
- Waterproofing Function.



## Specifications

Waterproof	IP67
Operating Temperature	-40°C ~ 100°C
Salt Spray	720 hours
Connector Type	Screw Type

## Drawing



## PRODUCT INTRODUCTION

# SAMSUNG-WATERPROOF KIT

UBCS's Waterproof Kits are mainly used for network equipment.



## Features

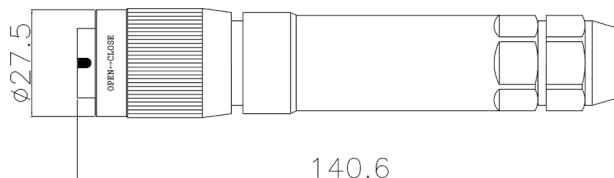
- Excellent Durability.
- Waterproofing Function.



## Specifications

Waterproof	IP67
Operating Temperature	-40°C ~ 100°C
Salt Spray	720 hours
Connector Type	Screw Type

## Drawing



## PRODUCT INTRODUCTION

# ERICSSON-WATERPROOF KIT

UBCS's Waterproof Kits are mainly used for network equipment.



## Features

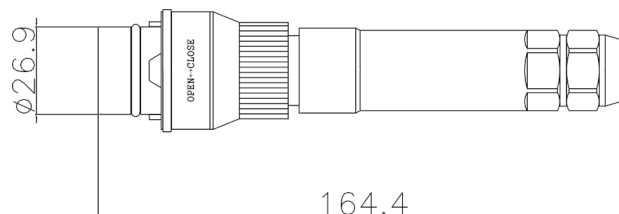
- Excellent Durability.
- Waterproofing Function.



## Specifications

Waterproof	IP67
Operating Temperature	-40°C ~ 100°C
Salt Spray	720 hours
Connector Type	Bayonet Coupling Type

## Drawing



## PRODUCT INTRODUCTION

# NOKIA-WATERPROOF KIT

UBCS's Waterproof Kits are mainly used for network equipment.



## Features

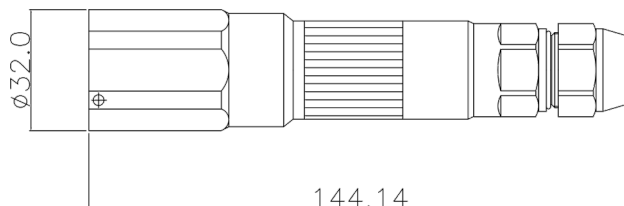
- Excellent Durability.
- Waterproofing Function.



## Specifications

Waterproof	IP67
Operating Temperature	-40°C ~ 100°C
Salt Spray	720 hours
Connector Type	Bayonet Coupling Type

## Drawing



**UBCS CREATIVE NEW VALUE WITH  
NUMBERLESS CHALLENGES**