

UBCS CONNECTORS

UBCS' connectors address a wide variety of RF application needs from wireless base stations to DAS, indoor and outdoor network infrastructure, testing and measurements. We provide South Korea's largest telecommunications companies with connectors using 5G. (Our connectors use 5G networks relying on spectrum at a maximum of 3.9 GHz range)



PRODUCT INTRODUCTION

N TYPE MALE (1/2" FLEXIBLE)

UBCS's Connectors are widely used in RF applications.



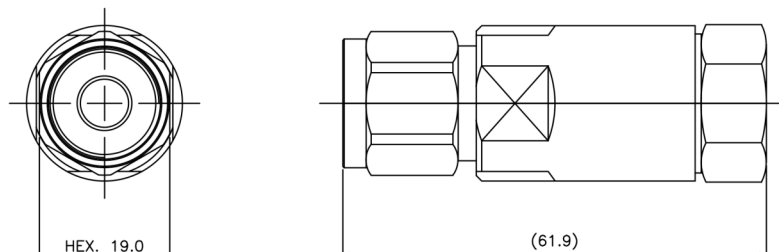
Features

- Excellent Mechanical Stability.
- Exceptional Performance.
- High Durability.

Specifications

| | |
|----------------------------|----------------------------|
| Interface | N Type Male |
| Body Style | Straight |
| Frequency Range Up To | DC ~ 4GHz |
| Impedance | 50Ω ± 5Ω |
| VSWR | 1.2:1 Max. |
| Insertion Loss | -0.05 × √f(GHz) dB |
| Insulation Resistance | ≥ 10GΩ |
| Contact Resistance | Outer conductor: ≤ 0.01Ω |
| | Center conductor: ≤ 0.005Ω |
| Interface Durability | 500 Cycles |
| Connector Retention Torque | > 10 Nm |
| Operating Temperature | -40 °C ~ +70 °C |
| Humidity | IEC68-2-30 |
| Vibration | IEC68-2-6 |

Drawing



PRODUCT INTRODUCTION

7-16 DIN MALE (1/2" FLEXIBLE)

UBCS's Connectors are widely used in RF applications.



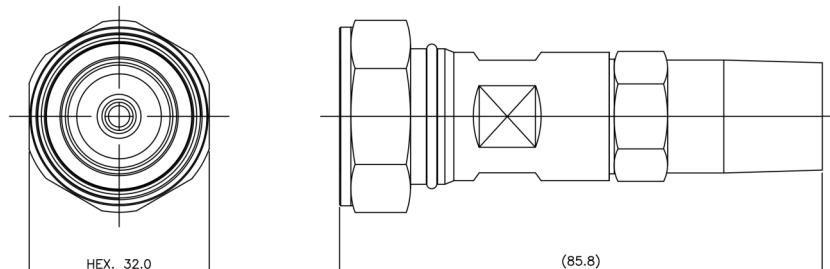
Features

- Excellent Mechanical Stability.
- Exceptional Performance.
- High Durability.

Specifications

| | |
|----------------------------|----------------------------|
| Interface | 7-16 DIN Male |
| Body Style | Straight |
| Frequency Range Up To | DC ~ 4GHz |
| Impedance | 50Ω ± 5Ω |
| VSWR | 1.2:1 Max. |
| Insertion Loss | -0.05 × √f(GHz) dB |
| Insulation Resistance | ≥ 10GΩ |
| Contact Resistance | Outer conductor: ≤ 0.01Ω |
| | Center conductor: ≤ 0.005Ω |
| Interface Durability | 500 Cycles |
| Connector Retention Torque | > 20 Nm |
| Operating Temperature | -40 °C ~ +70 °C |
| Humidity | IEC68-2-30 |
| Vibration | IEC68-2-6 |

Drawing



PRODUCT INTRODUCTION

4.3-10 MALE (1/2" FLEXIBLE)

UBCS's Connectors are widely used in RF applications.



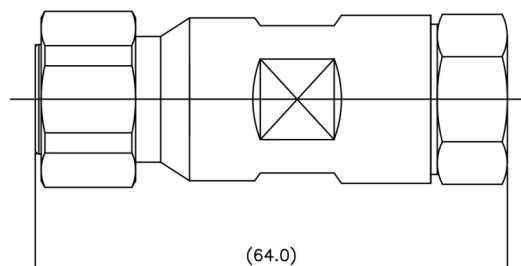
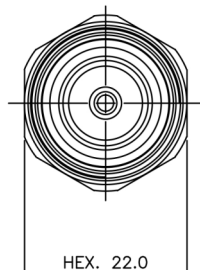
Features

- Excellent Mechanical Stability.
- Exceptional Performance.
- High Durability.

Specifications

| | |
|----------------------------|----------------------------|
| Interface | 4.3-10 Male |
| Body Style | Straight |
| Frequency Range Up To | DC ~ 4GHz |
| Impedance | 50Ω ± 5Ω |
| VSWR | 1.2:1 Max. |
| Insertion Loss | -0.05 × √f(GHz) dB |
| Insulation Resistance | ≥ 10GΩ |
| Contact Resistance | Outer conductor: ≤ 0.01Ω |
| | Center conductor: ≤ 0.005Ω |
| Interface Durability | 100 Cycles |
| Connector Retention Torque | > 5 Nm |
| Operating Temperature | -40 °C ~ +70 °C |
| Humidity | IEC68-2-30 |
| Vibration | IEC68-2-6 |

Drawing



PRODUCT INTRODUCTION

7-16 DIN MALE (7/8" FLEXIBLE)

UBCS's Connectors are widely used in RF applications.



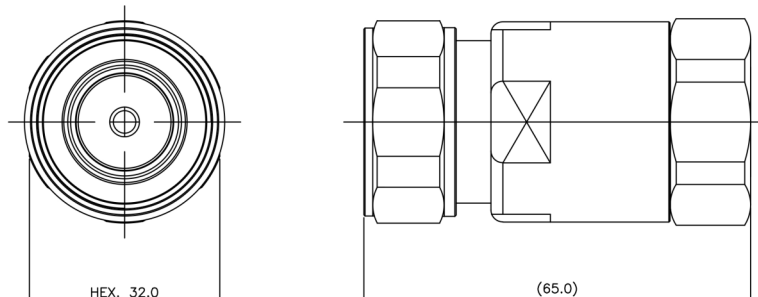
Features

- Excellent Mechanical Stability.
- Exceptional Performance.
- High Durability.

Specifications

| | |
|----------------------------|----------------------------|
| Interface | 7-16 DIN Male |
| Body Style | Straight |
| Frequency Range Up To | DC ~ 4GHz |
| Impedance | 50Ω ± 5Ω |
| VSWR | 1.2:1 Max. |
| Insertion Loss | -0.05 × √f(GHz) dB |
| Insulation Resistance | ≥ 10GΩ |
| Contact Resistance | Outer conductor: ≤ 0.01Ω |
| | Center conductor: ≤ 0.005Ω |
| Interface Durability | 500 Cycles |
| Connector Retention Torque | > 20 Nm |
| Operating Temperature | -40 °C ~ +70 °C |
| Humidity | IEC68-2-30 |
| Vibration | IEC68-2-6 |

Drawing



PRODUCT INTRODUCTION

4.3-10 MALE (7/8" FLEXIBLE)

UBCS's Connectors are widely used in RF applications.



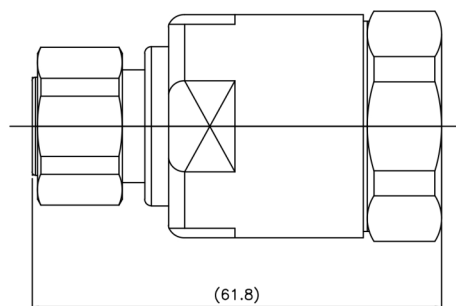
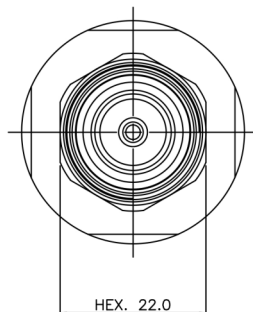
Features

- Excellent Mechanical Stability.
- Exceptional Performance.
- High Durability.

Specifications

| | |
|----------------------------|--|
| Interface | 4.3-10 Male |
| Body Style | Straight |
| Frequency Range Up To | DC ~ 4GHz |
| Impedance | 50Ω ± 5Ω |
| VSWR | 1.2:1 Max. |
| Insertion Loss | $-0.05 \times \sqrt{f(\text{GHz})}$ dB |
| Insulation Resistance | ≥ 10GΩ |
| Contact Resistance | Outer conductor: ≤ 0.01Ω |
| | Center conductor: ≤ 0.005Ω |
| Interface Durability | 100 Cycles |
| Connector Retention Torque | > 5 Nm |
| Operating Temperature | -40 °C ~ +70 °C |
| Humidity | IEC68-2-30 |
| Vibration | IEC68-2-6 |

Drawing



PRODUCT INTRODUCTION

N TYPE MALE (SWT 1/2")

UBCS's Connectors are widely used in RF applications.



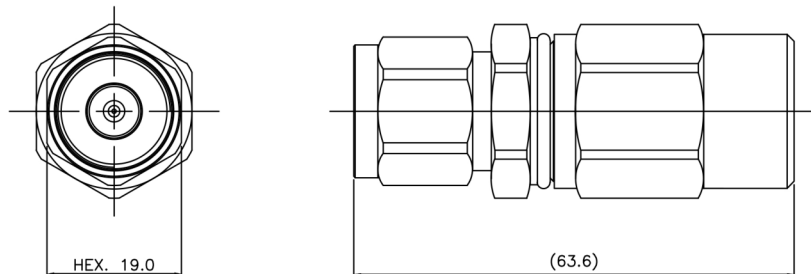
Features

- Excellent Mechanical Stability.
- Exceptional Performance.
- High Durability.

Specifications

| | |
|----------------------------|----------------------------|
| Interface | N Type Male |
| Body Style | Straight |
| Frequency Range Up To | DC ~ 4GHz |
| Impedance | 50Ω ± 5Ω |
| VSWR | 1.2:1 Max. |
| Insertion Loss | -0.05 × √f(GHz) dB |
| Insulation Resistance | ≥ 10GΩ |
| Contact Resistance | Outer conductor: ≤ 0.01Ω |
| | Center conductor: ≤ 0.005Ω |
| Interface Durability | 500 Cycles |
| Connector Retention Torque | > 10 Nm |
| Operating Temperature | -40 °C ~ +70 °C |
| Humidity | IEC68-2-30 |
| Vibration | IEC68-2-6 |

Drawing



PRODUCT INTRODUCTION

7-16 DIN MALE (SWT 1/2")

UBCS's Connectors are widely used in RF applications.



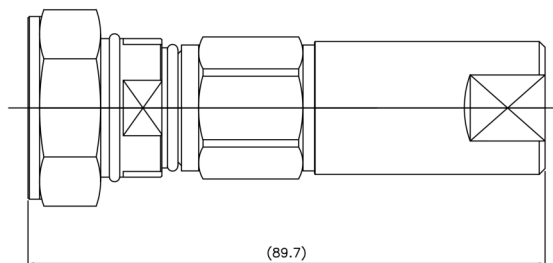
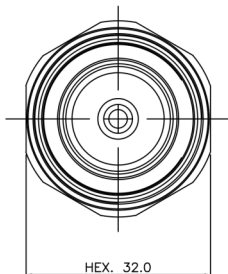
Features

- Excellent Mechanical Stability.
- Exceptional Performance.
- High Durability.

Specifications

| | |
|----------------------------|----------------------------|
| Interface | 7-16 DIN Male |
| Body Style | Straight |
| Frequency Range Up To | DC ~ 4GHz |
| Impedance | 50Ω ± 5Ω |
| VSWR | 1.2:1 Max. |
| Insertion Loss | -0.05 × √f(GHz) dB |
| Insulation Resistance | ≥ 10GΩ |
| Contact Resistance | Outer conductor: ≤ 0.01Ω |
| | Center conductor: ≤ 0.005Ω |
| Interface Durability | 500 Cycles |
| Connector Retention Torque | > 20 Nm |
| Operating Temperature | -40 °C ~ +70 °C |
| Humidity | IEC68-2-30 |
| Vibration | IEC68-2-6 |

Drawing



PRODUCT INTRODUCTION

4.3-10 MALE (SWT 1/2")

UBCS's Connectors are widely used in RF applications.



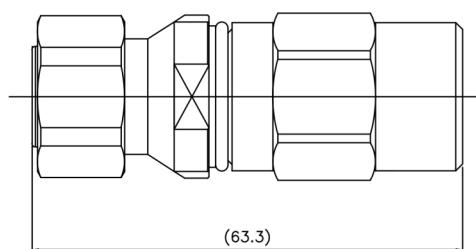
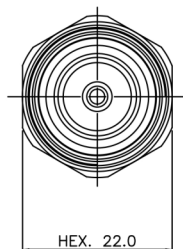
Features

- Excellent Mechanical Stability.
- Exceptional Performance.
- High Durability.

Specifications

| | |
|----------------------------|----------------------------|
| Interface | 4.3-10 Male |
| Body Style | Straight |
| Frequency Range Up To | DC ~ 4GHz |
| Impedance | 50Ω ± 5Ω |
| VSWR | 1.2:1 Max. |
| Insertion Loss | -0.05 × √f(GHz) dB |
| Insulation Resistance | ≥ 10GΩ |
| Contact Resistance | Outer conductor: ≤ 0.01Ω |
| | Center conductor: ≤ 0.005Ω |
| Interface Durability | 100 Cycles |
| Connector Retention Torque | > 5 Nm |
| Operating Temperature | -40 °C ~ +70 °C |
| Humidity | IEC68-2-30 |
| Vibration | IEC68-2-6 |

Drawing



PRODUCT INTRODUCTION

N TYPE MALE (SWT 2/5")

UBCS's Connectors are widely used in RF applications.



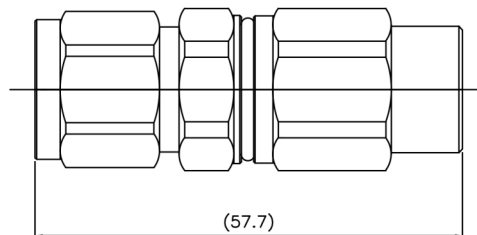
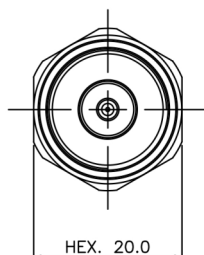
Features

- Excellent Mechanical Stability.
- Exceptional Performance.
- High Durability.

Specifications

| | |
|----------------------------|----------------------------|
| Interface | N Type Male |
| Body Style | Straight |
| Frequency Range Up To | DC ~ 4GHz |
| Impedance | 50Ω ± 5Ω |
| VSWR | 1.2:1 Max. |
| Insertion Loss | -0.05 × √f(GHz) dB |
| Insulation Resistance | ≥ 10GΩ |
| Contact Resistance | Outer conductor: ≤ 0.01Ω |
| | Center conductor: ≤ 0.005Ω |
| Interface Durability | 500 Cycles |
| Connector Retention Torque | > 10 Nm |
| Operating Temperature | -40 °C ~ +70 °C |
| Humidity | IEC68-2-30 |
| Vibration | IEC68-2-6 |

Drawing



PRODUCT INTRODUCTION

4.3-10 MALE (SWT 2/5")

UBCS's Connectors are widely used in RF applications.



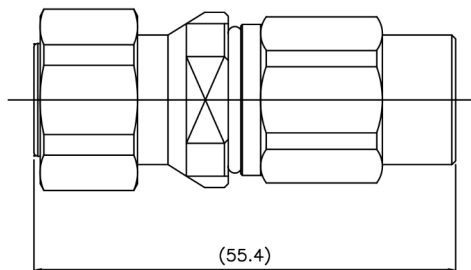
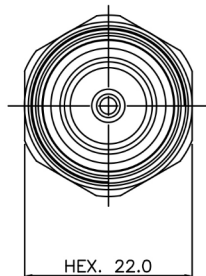
Features

- Excellent Mechanical Stability.
- Exceptional Performance.
- High Durability.

Specifications

| | |
|----------------------------|----------------------------|
| Interface | 4.3-10 Male |
| Body Style | Straight |
| Frequency Range Up To | DC ~ 4GHz |
| Impedance | 50Ω ± 5Ω |
| VSWR | 1.2:1 Max. |
| Insertion Loss | -0.05 × √f(GHz) dB |
| Insulation Resistance | ≥ 10GΩ |
| Contact Resistance | Outer conductor: ≤ 0.01Ω |
| | Center conductor: ≤ 0.005Ω |
| Interface Durability | 100 Cycles |
| Connector Retention Torque | > 5 Nm |
| Operating Temperature | -40 °C ~ +70 °C |
| Humidity | IEC68-2-30 |
| Vibration | IEC68-2-6 |

Drawing



PRODUCT INTRODUCTION

N TYPE MALE RIGHT ANGLE (SWT 2/5")

UBCS's Connectors are widely used in RF applications.



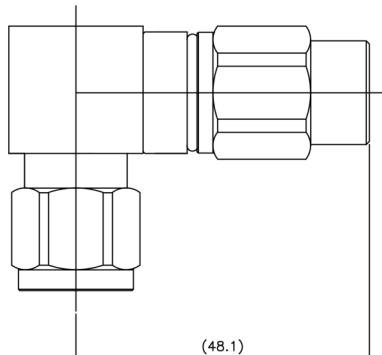
Features

- Excellent Mechanical Stability.
- Exceptional Performance.
- High Durability.

Specifications

| | |
|----------------------------|----------------------------|
| Interface | N Type Male |
| Body Style | Right Angle |
| Frequency Range Up To | DC ~ 4GHz |
| Impedance | 50Ω ± 5Ω |
| VSWR | 1.2:1 Max. |
| Insertion Loss | -0.05 × √f(GHz) dB |
| Insulation Resistance | ≥ 10GΩ |
| Contact Resistance | Outer conductor: ≤ 0.01Ω |
| | Center conductor: ≤ 0.005Ω |
| Interface Durability | 500 Cycles |
| Connector Retention Torque | > 10 Nm |
| Operating Temperature | -40 °C ~ +70 °C |
| Humidity | IEC68-2-30 |
| Vibration | IEC68-2-6 |

Drawing



PRODUCT INTRODUCTION

N TYPE MALE - LOCK TYPE (1/2" FLEXIBLE)

UBCS's Connectors are widely used in RF applications.



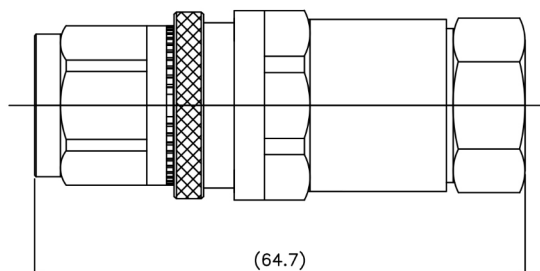
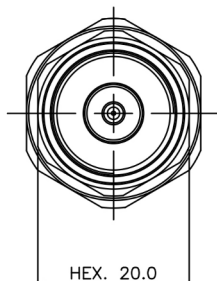
Features

- Excellent Mechanical Stability.
- Exceptional Performance.
- High Durability.
- Lock Type. (Preventing Loosening)

Specifications

| | |
|----------------------------|----------------------------|
| Interface | N Type Male |
| Body Style | Lock Type Straight |
| Frequency Range Up To | DC ~ 4GHz |
| Impedance | 50Ω ± 5Ω |
| VSWR | 1.2:1 Max. |
| Insertion Loss | -0.05 × √f(GHz) dB |
| Insulation Resistance | ≥ 10GΩ |
| Contact Resistance | Outer conductor: ≤ 0.01Ω |
| | Center conductor: ≤ 0.005Ω |
| Interface Durability | 500 Cycles |
| Connector Retention Torque | > 10 Nm |
| Operating Temperature | -40 °C ~ +70 °C |
| Humidity | IEC68-2-30 |
| Vibration | IEC68-2-6 |

Drawing



PRODUCT INTRODUCTION

7-16 DIN MALE - LOCK TYPE (1/2" FLEXIBLE)

UBCS's Connectors are widely used in RF applications.



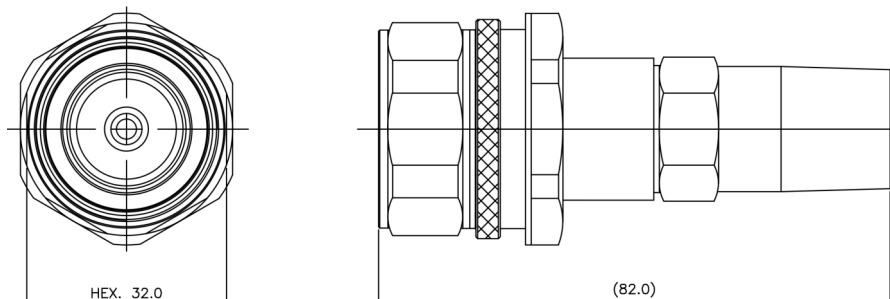
Features

- Excellent Mechanical Stability.
- Exceptional Performance.
- High Durability.
- Lock Type. (Preventing Loosening)

Specifications

| | |
|----------------------------|----------------------------|
| Interface | 7-16 DIN Male |
| Body Style | Lock Type Straight |
| Frequency Range Up To | DC ~ 4GHz |
| Impedance | 50Ω ± 5Ω |
| VSWR | 1.2:1 Max. |
| Insertion Loss | -0.05 × √f(GHz) dB |
| Insulation Resistance | ≥ 10GΩ |
| Contact Resistance | Outer conductor: ≤ 0.01Ω |
| | Center conductor: ≤ 0.005Ω |
| Interface Durability | 500 Cycles |
| Connector Retention Torque | > 20 Nm |
| Operating Temperature | -40 °C ~ +70 °C |
| Humidity | IEC68-2-30 |
| Vibration | IEC68-2-6 |

Drawing



PRODUCT INTRODUCTION

4.3-10 MALE - LOCK TYPE (1/2" FLEXIBLE)

UBCS's Connectors are widely used in RF applications.



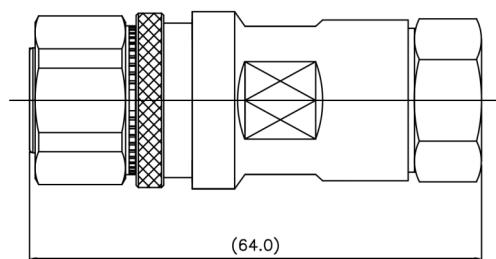
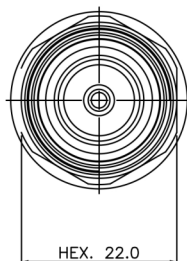
Features

- Excellent Mechanical Stability.
- Exceptional Performance.
- High Durability.
- Lock Type. (Preventing Loosening)

Specifications

| | |
|----------------------------|----------------------------|
| Interface | 4.3-10 Male |
| Body Style | Lock Type Straight |
| Frequency Range Up To | DC ~ 4GHz |
| Impedance | 50Ω ± 5Ω |
| VSWR | 1.2:1 Max. |
| Insertion Loss | -0.05 × √f(GHz) dB |
| Insulation Resistance | ≥ 10GΩ |
| Contact Resistance | Outer conductor: ≤ 0.01Ω |
| | Center conductor: ≤ 0.005Ω |
| Interface Durability | 100 Cycles |
| Connector Retention Torque | > 5 Nm |
| Operating Temperature | -40 °C ~ +70 °C |
| Humidity | IEC68-2-30 |
| Vibration | IEC68-2-6 |

Drawing



PRODUCT INTRODUCTION

4.3-10 MALE - LOCK TYPE (SWT 2/5")

UBCS's Connectors are widely used in RF applications.



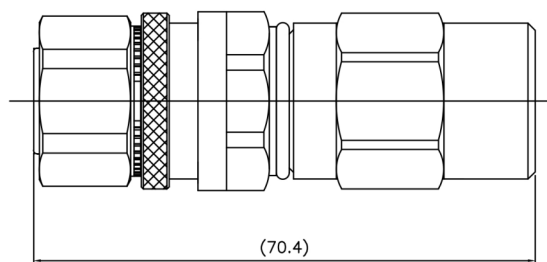
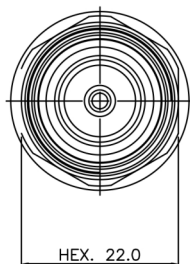
Features

- Excellent Mechanical Stability.
- Exceptional Performance.
- High Durability.
- Lock Type. (Preventing Loosening)

Specifications

| | |
|----------------------------|----------------------------|
| Interface | 4.3-10 Male |
| Body Style | Lock Type Straight |
| Frequency Range Up To | DC ~ 4GHz |
| Impedance | 50Ω ± 5Ω |
| VSWR | 1.2:1 Max. |
| Insertion Loss | -0.05 × √f(GHz) dB |
| Insulation Resistance | ≥ 10GΩ |
| Contact Resistance | Outer conductor: ≤ 0.01Ω |
| | Center conductor: ≤ 0.005Ω |
| Interface Durability | 100 Cycles |
| Connector Retention Torque | > 5 Nm |
| Operating Temperature | -40 °C ~ +70 °C |
| Humidity | IEC68-2-30 |
| Vibration | IEC68-2-6 |

Drawing



**UBCS CREATIVE NEW VALUE WITH
NUMBERLESS CHALLENGES**