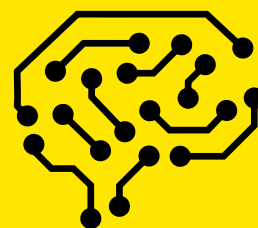


BADEN-WÜRTTEMBERG – Home of forerunners in Artificial Intelligence.

BADEN-WÜRTTEMBERG: ON THE WAY TO BECOMING A LEADING AI REGION

Under the framework of a statewide digitisation strategy, Baden-Württemberg (BW) wants to become a global lead region for digital change – with a central focus on artificial intelligence (AI). The preconditions are good: in addition to world-renowned companies, our state benefits from highly innovative medium-sized enterprises with outstanding competencies in central AI application fields such as the manufacturing industry, mechanical and plant engineering, the automotive sector, the healthcare industry,

industry-related services and software development. With the Cyber Valley, which unites AI experts from science and industry, one of the top AI addresses worldwide is already at home in the German Southwest. Furthermore, a central strength of our state lies in application-oriented AI research, which benefits from nationwide networks and ensures a smooth transfer of research results into practice.



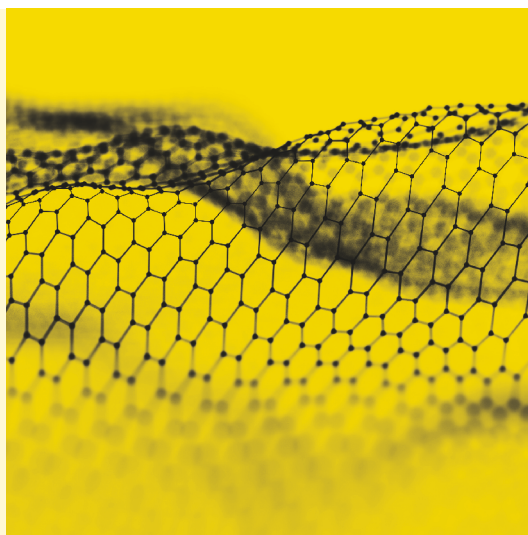
CUTTING-EDGE AI RESEARCH AT CYBER VALLEY

Europe's largest research consortium in the field of AI with partners from science and industry.



STATEWIDE DIGITISATION STRATEGY digital@bw

for BW as a lead region of digital change: more than 70 projects with a volume of over €400 million.



€50
MILLION

for new AI innovation park for companies, start-ups, researchers, talents, investors



DIGITAL HUB KARLSRUHE

Germany-wide key location for development and application of AI



GROUNDBREAKING RESEARCH

by renowned institutes, e.g. MPI, KIT, FZI, Fraunhofer IAO and many more

19

regional, funded AI labs for networking and AI in SMEs

YOUR GATEWAY TO THE MARKETS OF THE EU



ELLIS

Connected with the leading AI researchers all across Europe

HOME OF
Omikron,
Trumpf,
Festo, SAP,
Bosch, Schunk
and many more



Baden-Württemberg

Where ideas work.



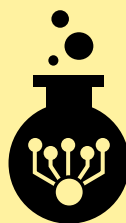
INNOVATION CAMP BW
In-depth insights for
SMEs into the Silicon Valley
ecosystem



2017
**SPOTSIZE – AI-BASED
FOOT MEASUREMENT**
by Spotsize JACQ



2016
VIRTUAL POWERPLANT
by EnBW Energie
Baden-Württemberg

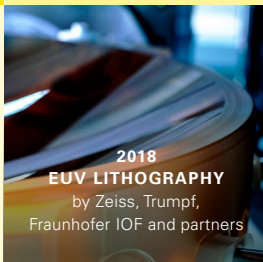


AI APPLICATIONS FOR THE FUTURE

2 statewide real AI laboratories
for joint developments by science,
business and society.



FOCAL POINTS IN
energy, mobility,
healthcare, production,
sustainability, critical
infrastructure, cyber
security, engineering,
industry 4.0 and many
more



2018
EUV LITHOGRAPHY
by Zeiss, Trumpf,
Fraunhofer IOF and partners

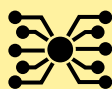


STATE STRATEGY
**"ARTIFICIAL
INTELLIGENCE"**
For a unique AI
ecosystem in BW

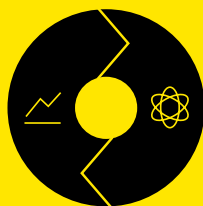


ATTRACTIVE FOR TOP AI TALENTS AND EXPERTS

thanks to Cyber Valley, more than
45 professorships with an AI focus and
AI learning factories.



**NETWORK FOR DIGITAL
INNOVATIONS**
10 regional and 3 national
Digital Hubs



CLOSE LINKS BETWEEN SCIENCE AND BUSINESS

Outstanding for basic and application-
oriented research and ideal for promoting
start-ups.



SKILLED YOUNG TALENT

Expansion of study program-
mes with a focus on AI

Find out more about the business
location Baden-Württemberg (BW) and your
opportunities to invest:

www.bw-invest.de/en/



Baden-Württemberg International

**Baden-Württemberg
International GmbH (bw-i)**

Willi-Bleicher-Str. 19
70174 Stuttgart, Germany
T +49 711 22787-0
info@bw-i.de
www.bw-i.de/en/



facebook
@BadenWuerttembergInternational
LinkedIn
www.linkedin.com/company/bw-i/

WE ARE YOUR PARTNER on the path to success!

Baden-Württemberg International is the central point of contact for foreign
investors in Baden-Württemberg (BW) and provides assistance to companies and
research institutions that either wish to settle or expand their operations in the
German Southwest. Talk to us!



We provide information
about BW.



We find the right partner
and location for you.



We connect you with
all important players.



We support you in
administrative procedures.

Publisher: Baden-Württemberg International, Agency for International Economic and Scientific Cooperation mbH,
December 2020 | Design: Gold & Wirtschaftswunder, www.gww-design.de | Photos: © Deutscher Zukunftspreis / Ansgar Pudenz,
© spotsize GmbH, © MPI for Intelligent Systems / Wolfram Scheible, © 2020 Virtual powerplant by EnBW