

HOLO NAVI M22

2021 Technical details



Design, technical facts

1. Cellphone clamping mechanism change
2. Wireless charging Watt improvement
3. Charging type change
4. Mounting mechanism
5. S/W – HOLO NAVI APP
6. Design
7. Image



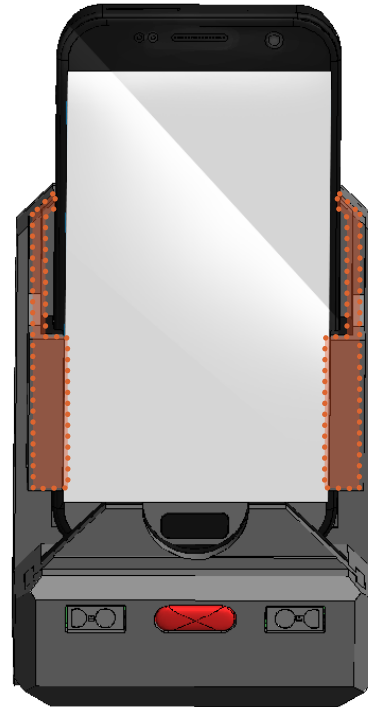


1. Cellphone clamping mechanism change

1-1 Comparison of conventional mobile phone method

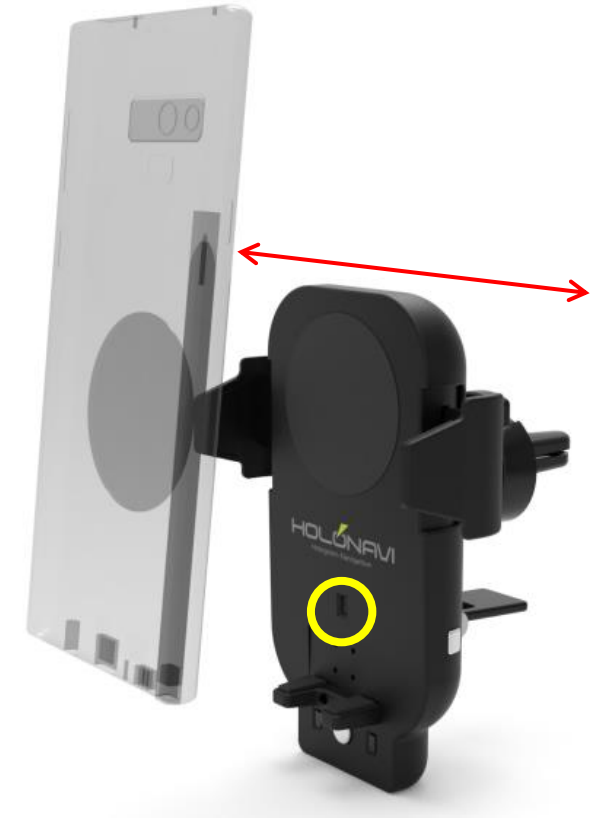
-change content-

Recognizing mobile devices through sensors
Clamping mobile devices automatically



Previous design

(manual)



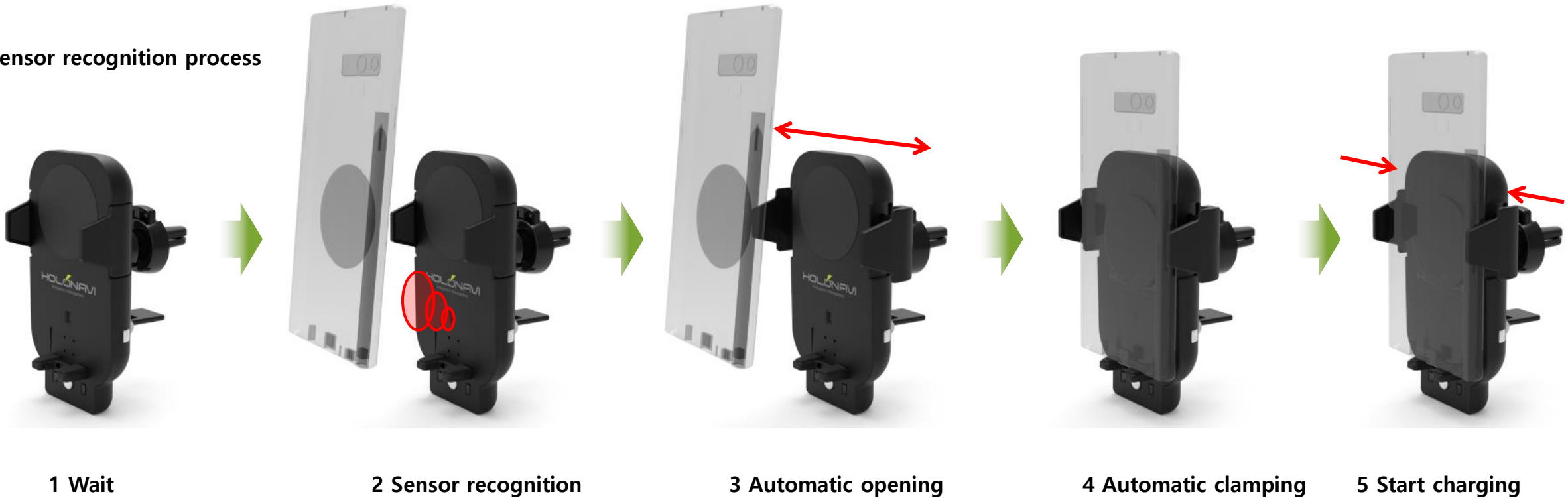
New design

(automatic sensor recognition)



1. Cellphone clamping mechanism change

1-2 Sensor recognition process

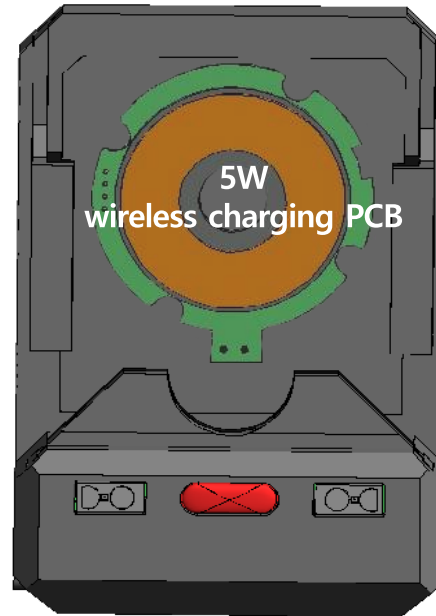




2. Wireless charging Watt improvement

2-1 Comparing the previous method
to the new method

-Changes-
PCB change from 5W charging to 15W charging



Previous design

(5W charging PCB)



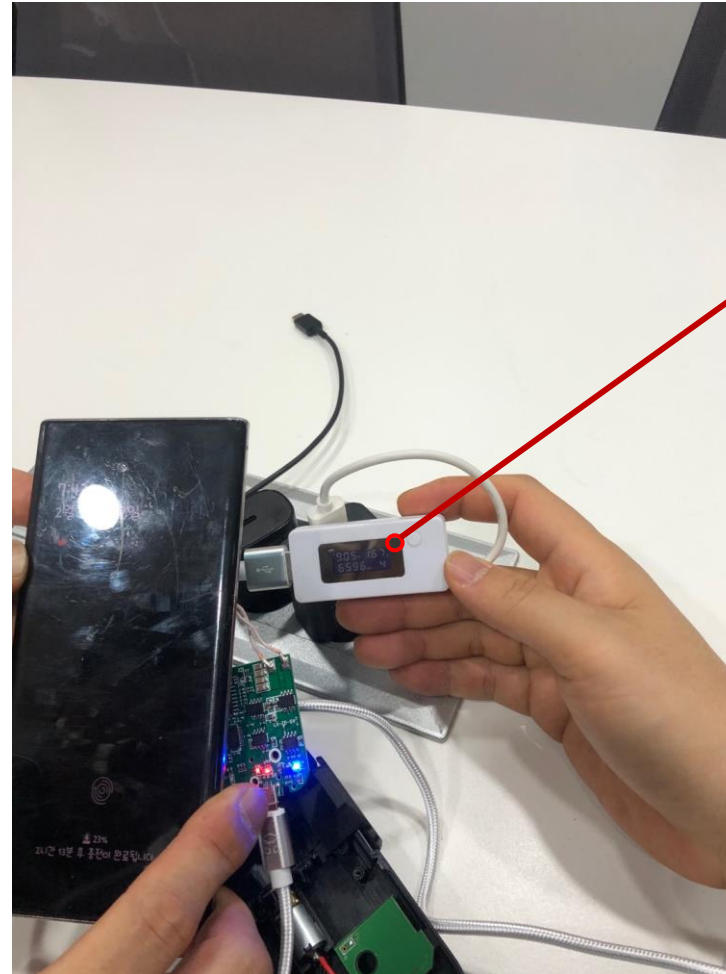
New design

(15W charging PCB)



2. Wireless charging Watt improvement

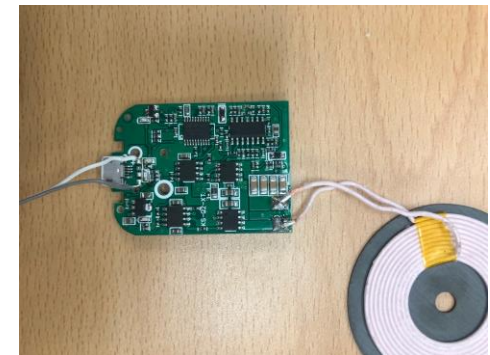
2-2 Mobile phone charge confirmation
image



Checking the actual charging status



$$9.05 \text{ V} \times 1.67 \text{ A} = 15.1135 \text{ W}$$



Real Charging PCBs / Module

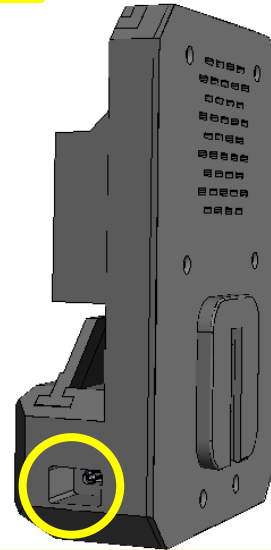


3. Charging type change

3-1 Mobile phone charging type compared to previous version

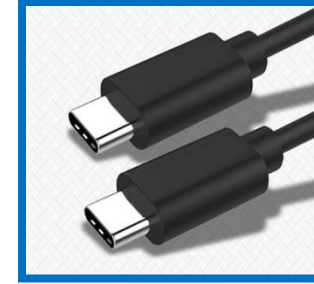
-Changes-

Change module from micro 5PIN (type B) to C type



Previous design

(12V micro 5-pin charging module)



New design

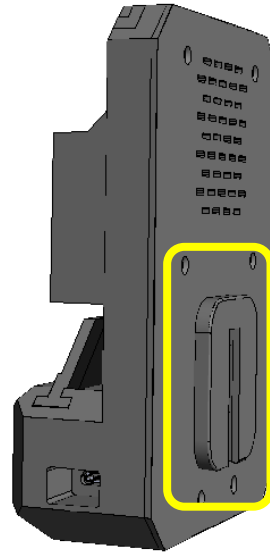
(USB C type through the cigar socket)



4. Changes in the mounting mechanism

4-1 Comparison with previous method of mounting

-Changes-
Air-vent fixing method and anti-shake support



Previous design

(Suction cup method)



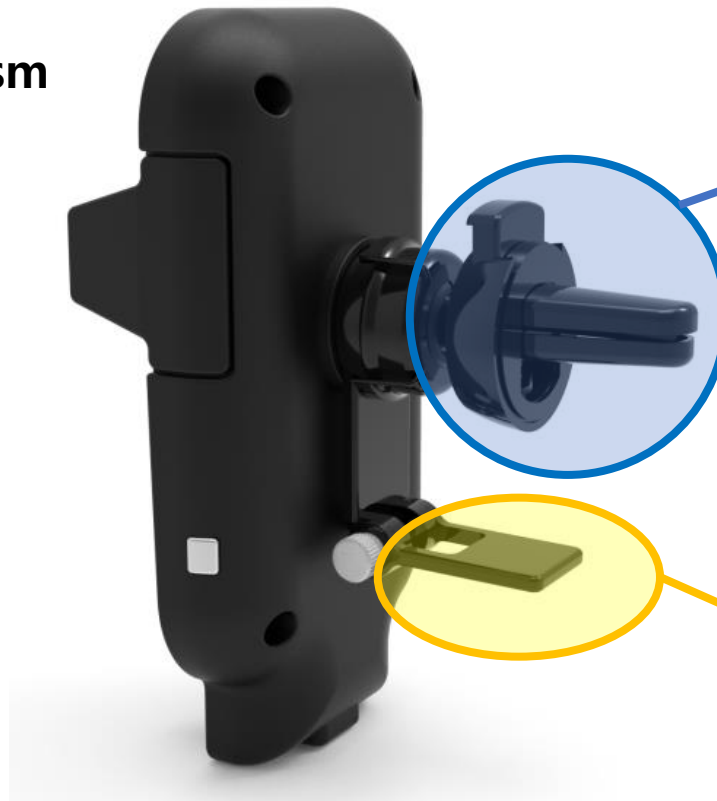
New design

(Air-vent mounting method)



4. Changes in the mounting mechanism

4-2 Detailed image of how it is mounted



Air-vent type mounting



Anti-sagging bracket support



5. S/W – HOLO NAVI APP





5. S/W – HOLO NAVI APP

5-1 Home button feature description

-Changes-

Return to HOLO NAVI home screen function while the app is in use

- HOLO NAVI MAIN SCREEN -



Home button

Return to main screen



(Navigation app running)

Return to main screen



(Music app running)

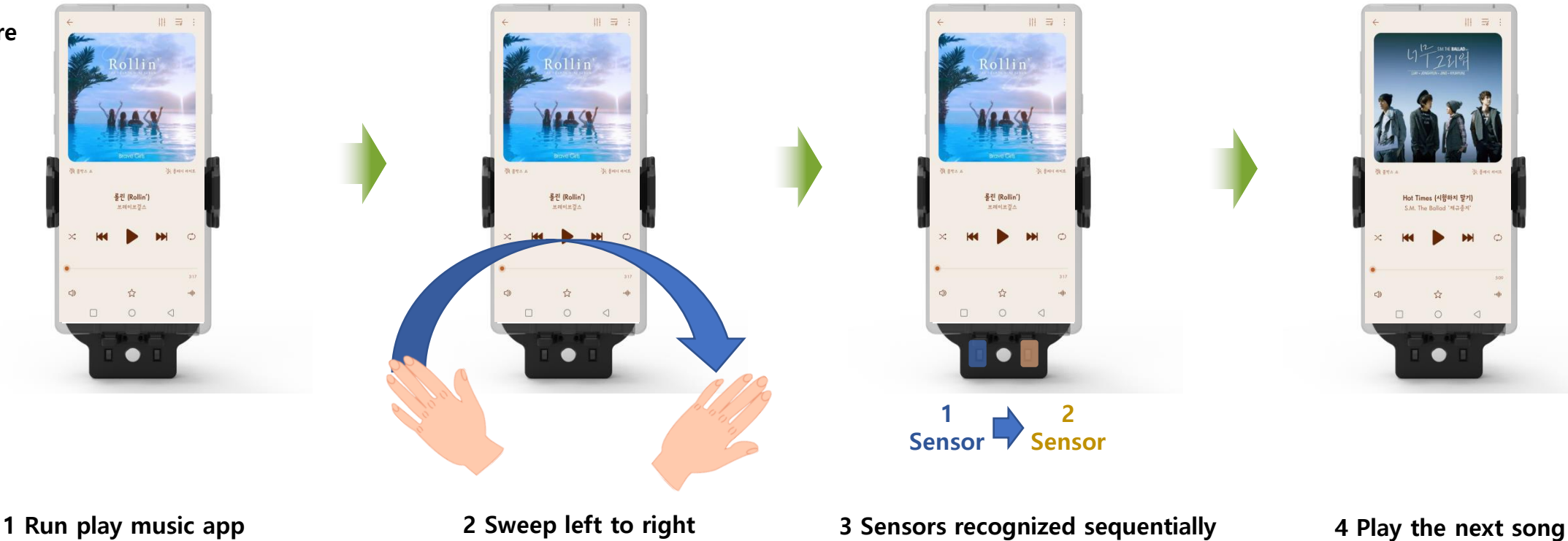


5. S/W – HOLO NAVI APP



Run music app

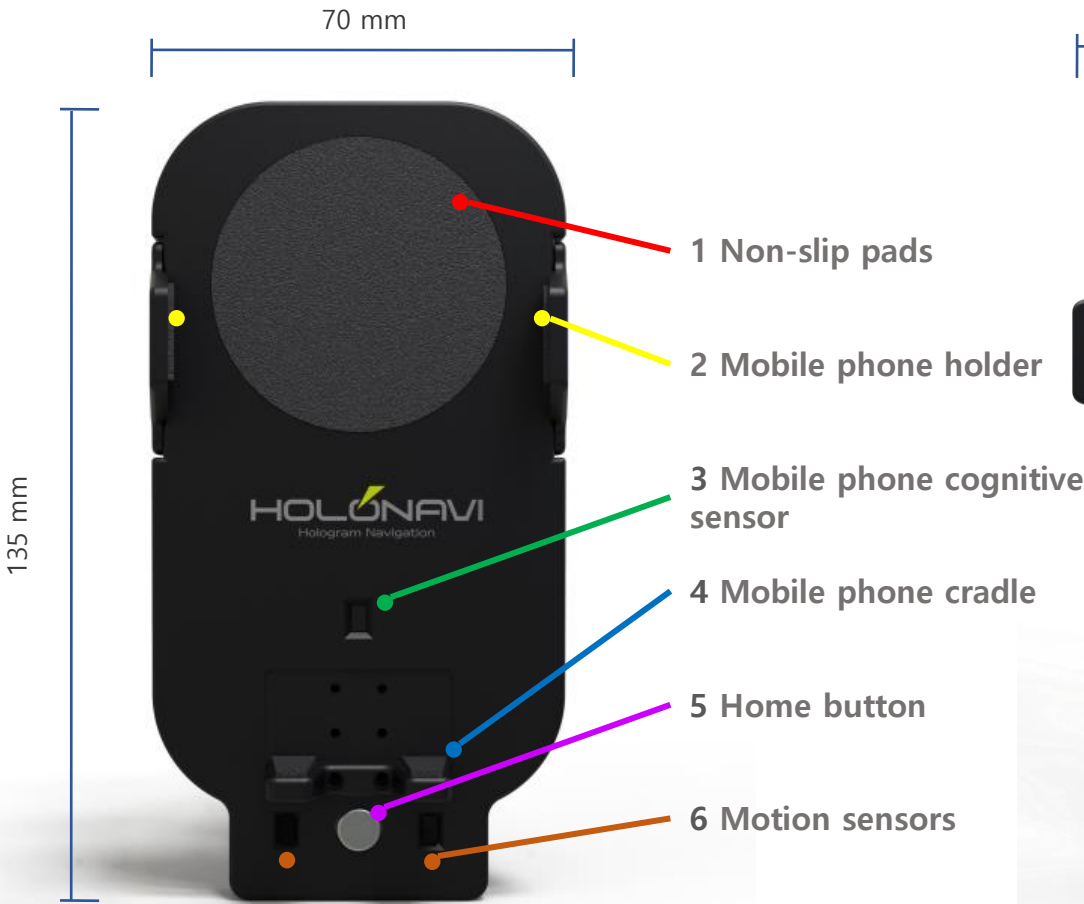
5-2 Gesture feature description



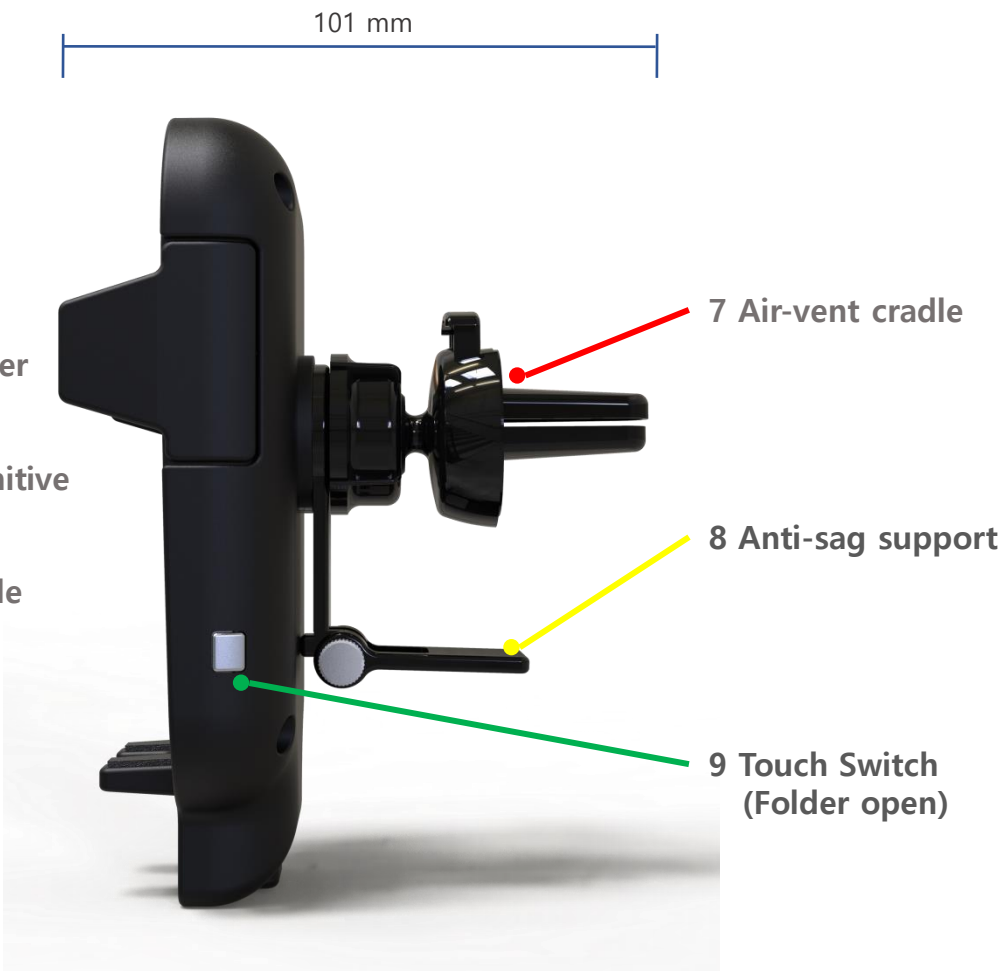


6. Design

Configuration detail



- Front -



- Side -



7. Image





7. Image





7. Image





FOB price – 180 USD
MOQ – 5000pcs

Contact

Address: 859 Huimang-daero, Nam-gu,
Pohang, South Korea
Tel : +82-10-5538-4989 (CEO)
+82-54-274-1003 (Office)
Web : <http://maininfo.co.kr/>
Email : rokmc748@chol.com (CEO)
maininfo777@gmail.com (Office)
Fax : +82-54-282-3602

