



深圳市拓实网络通讯有限公司

SHENZHEN TUOSHI NETWORK COMMUNICATIONS CO.,LIMITED





wifi6 router and 4G/5G CPE manufacturer

Established in 2006, SHENZHEN TUOSHI NETWORK COMMUNICATIONS CO., LTD., which is a high tech company specially working on the products of accessories for internet and computer. Under the advanced devices, professional experience, as well as the scientific management, we adhere Down-to-earth, hard struggle, and implement, good faith as purpose, service as a fundamental, innovation as the soul, talent as the core. We will provide you the highest quality not only for the device but also the products!





wifi6 router and 4G/5G CPE manufacturer

R&D:

TUOSHI pays much attention on R&D, invests several devices about the testing, like 4g RF testing CMW500, wifi signal test device, the HP internet analyse device, what's more, we have close cooperation with the chipset factories like Ralink Realtek Qualcomm and etc.. we are improving our technical level and expanding our product lines.





wifi6 router and 4G/5G CPE manufacturer

Production equipment SMT equipment





wifi6 router and 4G/5G CPE manufacturer

Production equipment

Injection Molding Machine





wifi6 router and 4G/5G CPE manufacturer

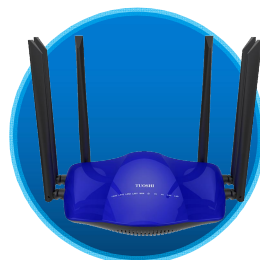
Assemble Line





wifi6 router and 4G/5G CPE manufacturer

TUOSHI product





wifi6 router and 4G/5G CPE manufacturer



Development History:

Established in 2006, SHENZHEN TUOSHI NETWORK COMMUNICATIONS CO., LTD. is a high-tech private enterprise, mainly committed to the R&D and production of 4G router, 4g MIFI , 4G cpe, 802.11g/b/n Wireless USB Adapter, wifi repeater, wireless network and computer peripheral products





wifi6 router and 4G/5G CPE manufacturer

2018

4G LTE CPE worked with operators Mexico Telcel Myanmar Mytel
1200Mbps dual band 4G router launched

2017

4G LTE CPE worked with operators like Vietnam Viettel Myanmar Ooredoo Mexico Alton.

2016

4G LTE MiFi passed the certify of operator in Japan successfully and the strict test of the third lab of Japan.

4G LTE MiFi worked with operators from many countries like Japan, Vietnam, India, Greece and Myanmar etc.

Successfully introduced the dual band 802.11AC wifi usb adapter, we will continue to develop the quality products actively, bring you better and save worry product experience with our perfect service.

2015

To meet demand about use high power wifi usb adapter to surf the internet without PC on , TUOSHI developed the USB WiFi router, which is popular to the market.

Successfully developed the 4G LTE MiFi, 4G LTE module.

With the team building of foreign trade, TUOSHI attended the Hongkong Global sources trade fair in April to communicate with the global buyer and speed up the marketing development.





wifi6 router and 4G/5G CPE manufacturer

2014

R&D team created and grew up to be a strong one, MELON implements product diversity from the single product wifi usb adapter, developed the CPE, AP etc. Products. Meanwhile, the new 300Mbps wifi usb adapters with good selling performance for its higher speed and more fluency internet surfing experience.

2013

Won the WLAN terminal bidding of CMCC Shandong Branch;

Won the bid of CMCC Guizhou Branch;

Won the bid of CMCC branch of Hanzhong, Weinan, Xianyang, Yuling in Shanxi Province;

Attended the 114th China Import and Export Fair("Canton Fair"), developed the overseas marketing actively, improved the cooperation both at home and abroad, won the unanimous praise.

2012

To fulfill the marketing needs and mass production, we expanded the production by moving factory to Yinlong Technology Park, Longgang District, Shenzhen, production ability up to 300,000pcs per month.

Successfully won the WLAN terminal bidding of CMCC Qindao, Shandong Branch, thereafter the Taian, Heze, Yantan, Linyi etc. 11 branches in Shandong, MELON stepped to a new stage.

2011

Successfully developed the 2.4G Apple server(Apple Mate), provided solutions of the WiFi hotspot, enlarge memory, share files and wireless audio.



Wlan Equipment manufacturer

2010

With the recovery of the world economy, facing a new start, we will continually offer quality product, perfect service, on time delivery to build Tuoshi for the ages.

2009

Launched CDMA EVDO full series wireless usb adapter in July, featured USB interface.

High power wifi usb adapter became the star-seller in September, monthly sale 80,000pcs.

Opened sub-office in New Zealand, in charge of Australia and New Zealand district marketing development.

2008

EDGE series wireless USB adapter on sale, including the USB interface, PCMCIA interface and EXPRESS interface,

Tuoshi expended the production and moved to HengMingZhu Industrial Park in May, SMT daily production up to 15millions points, finished product monthly output up to 150,000pcs, sales and production ability stood on a higher level.

2007

Finish the R&D of Express interface CDMA 2000 1X wifi usb adapter, including 450M, 800M and 1900M series product. Home market improved steadily, meanwhile, exported to Indonesia, Philippine, Russia, Nigeria etc. Countries.

Tuoshi invested FUJI high speed SMT production line, daily production 800,000 points.

2006

Successfully R&D the WLAN 2000 1X wifi usb adapter with PCMCIA interface;

USB WLAN 2000 1X wifi usb adapter on sale;

Product sale to all over the country, well-received by users.

Product sale to Indonesia, sales volume up to 140,000pcs.

Become Alibaba Paid Member in 2006.



wifi6 router and 4G/5G CPE manufacturer

Qualification

CERTIFICATE of Conformity
Certificate No.: LCS-130910

Applicant : Shenzhen Tuoshi Technology Co., Ltd.

Address : 3F, A5 Building, Yimlong Industrial Park, Shenshan Road 292 Longgang District, Shenzhen, China

Product : Wireless USB Adapter

Model(s) : N3000, W1055, W2055, WF-2000, WF-2000+, W2000, N2000, N4000, N805, N810, N818, N918, N89, N88, M15, M152, M155, N80, N83, G83

Trade Mark : MELON, WIFISKY

The submitted products have been tested by us with the listed standards and found in compliance with the following European Directives:

The R&TTE Directive 1999/5/EC

Applied Standards	Report No.
Article 3.2: Effective Use of The Radio Spectrum ETSI EN 300 328 V1.7.1 (2006-10)	LCS130922521E
Article 3.1b): Electromagnetic Compatibility ETSI EN 301 488-1 V1.9.2 (2011-08) ETSI EN 301 488-17 V2.2.1 (2012-09)	LCS130922522E
Article 3.1a): Health and Safety EN 62479: 2010 EN 60950-1: 2006+A11: 2009+A1: 2010+A12: 2011	LCS130922520H LCS130922519S

The tests were performed in normal operation mode. The test results apply only to the particular sample tested and to the specific tests carried out. This certificate applies specifically to the sample investigated in our test reference number only.

The CE markings as shown below can be affixed on the product after preparation of necessary technical documentation.

Other relevant Directives have to be observed.

CE

Shenzhen LCS Compliance Testing Laboratory Ltd.
1/F, Xingyuan Industrial Park, Tongda Road, Bao'an Avenue,
Bao'an District, Shenzhen, Guangdong, China
Tel: (86)755-82591330
Http://www.LCS-cert.com

Fax: (86)755-82591332
Email: webmaster@lcs-cert.com

Manager
September 26, 2013

CERTIFICATE of Conformity
2011/65/EU Restriction of Hazardous Substance
Reference No.: LCS130922524R

When tested as specified, the submitted sample complies with the requirements of Commission Decision of 21 July 2011 Amending Directive 2011/65/EU.

Applicant : Shenzhen Tuoshi Technology Co., Ltd.

Address : 3F, A5 Building, Yimlong Industrial Park, Shenshan Road 292 Longgang District, Shenzhen, China

Trade Mark : MELON, WIFISKY

Product : Wireless USB Adapter

Model(s) : W1055, W2055, WF-2000, WF-2000+, W2000, N2000, N3000, N4000, N805, N810, N818, N918, N89, N88, M15, M152, M155, N80, N83, G83

The test report is issued by the Company subject to its General Conditions of Service printed overleaf. Attention is drawn to the limitations of liability, indemnification and jurisdictional issues defined therein. The results shown in this test report refer only to the sample(s) tested unless otherwise stated. This Test Report cannot be reproduced, except in full, without prior written permission of the Company.

Other relevant directives have to be observed.

RoHS

Shenzhen LCS Compliance Testing Laboratory Ltd.
1/F, Xingyuan Industrial Park, Tongda Road, Bao'an Avenue, Bao'an District, Shenzhen,

Manager
September 26, 2013



wifi6 router and 4G/5G CPE manufacturer





wifi6 router and 4G/5G CPE manufacturer

Our mission

To offer high quality product and best service to our customer, to understand and meet their demands. Create value for customers and get improvement with partners.

Try our best to cultivate first-class corporate culture, build first-class experts team and establish first-class brands.

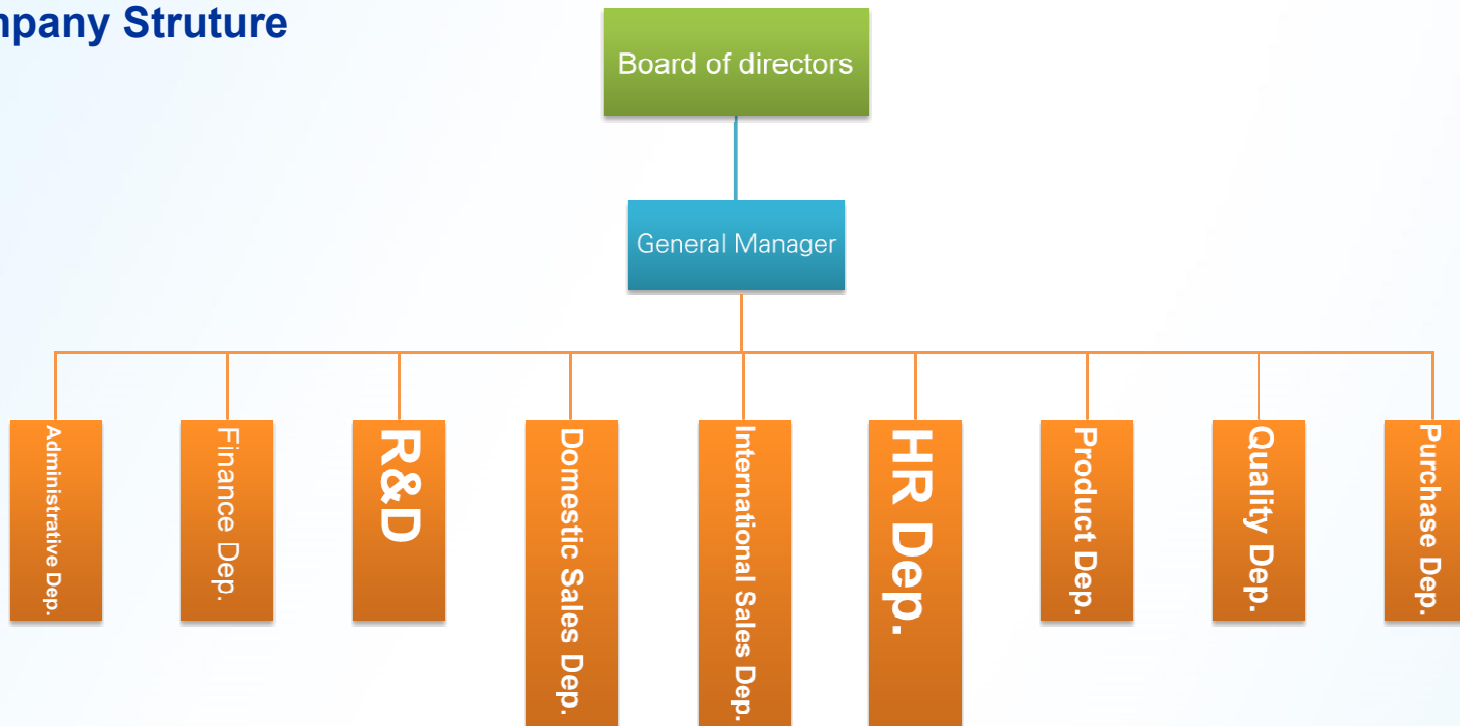
To bear the social responsibility, serve the country and society, provide broad prospects for staffs in their career.





Wlan and 4G data equipment manufacture

Company Struture





Wlan and 4G data equipment manufacture





Wlan and 4G data equipment manufacture



TẠP CHÍ
KIẾN THỨC
KINH Y

Y5 4U – GIẢI PHÁP TIẾT KIỆM CHO KHÁCH DU LỊCH ĐẾN VIỆT NAM

The product is Y54U, provided by MobiFone Global.



Y54U is the rental service of pocket WiFi router specifically designed to offer visitors in Vietnam a convenient Internet access with fast and reliable connection.



Wlan and 4G data equipment manufacture

Thank you!

